

2.2-MHz, 60-V OUTPUT STEP UP DC/DC CONVERTER

 Check for Samples: [TPS55332-Q1](#)

FEATURES

- Withstands Transients up to 60 V, Boost Input Operating Range of 1.5 V to 40 V (VIN)
- Peak Internal Switch Current: 5.7 A (typ)
- 2.5 V ± 1.5% Feedback Voltage Reference
- 80 kHz to 2.2 MHz Switching Frequency
- High Voltage Tolerant Enable Input for On/Off State
- Soft Start on Enable Cycle
- Slew Rate Control on Internal Power Switch
- External Clock Input for Synchronization
- External Compensation for Wide Bandwidth Error Amplifier
- Programmable Power on Reset Delay
- Reset Function Filter Time for Fast Negative Transients
- Programmable Undervoltage Output Monitoring, Issuance of Reset if Output Falls Below Set Threshold
- Thermal Shutdown to Protect Device During Excessive Power Dissipation
- ILIM Threshold Protection (Current Limit)
- Operating Junction Temperature Range: –40°C to 150°C
- Thermally Enhanced 20-Pin HTSSOP PowerPAD™ Package

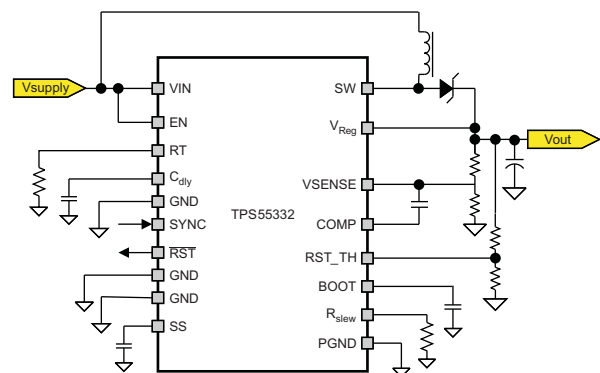
APPLICATIONS

- Lighting
- Battery Powered Applications
- Qualified for Automotive Applications

DESCRIPTION

The TPS55332 is a monolithic high-voltage switching regulator with integrated 3-A, 60-V power MOSFET. The device can be configured as a switch mode step-up power supply with voltage supervisor. Once the internal circuits have stabilized with a minimum input supply of 3.6 V, the system can then have an input voltage range from 1.5 V to 40 V, to maintain a fixed boost output voltage. For optimum performance, VIN/Vout ratios should be set such that the minimum required duty cycle pulse > 150 ns. The supervisor circuit monitors the regulated output and indicates when this output voltage has fallen below the set value. The TPS55332 has a switching frequency range from 80 kHz to 2.2 MHz, allowing the use of low profile inductors and low value input and output capacitors. The external loop compensation gives the user the flexibility to optimize the converter response for the appropriate operating conditions. Using the enable pin (EN), the shutdown supply current is reduced to 1 μA. The device has built-in protection features such soft start on enable cycle, pulse-by-pulse current limit, and thermal sensing and shutdown due to excessive power dissipation.

SIMPLIFIED SCHEMATIC



S0401-01



Please be aware that an important notice concerning availability, standard warranty, and use in critical applications of Texas Instruments semiconductor products and disclaimers thereto appears at the end of this data sheet.

PowerPAD is a trademark of Texas Instruments.

TPS55332-Q1

SLVS939A – JUNE 2009 – REVISED JUNE 2010

www.ti.com



This integrated circuit can be damaged by ESD. Texas Instruments recommends that all integrated circuits be handled with appropriate precautions. Failure to observe proper handling and installation procedures can cause damage.

ESD damage can range from subtle performance degradation to complete device failure. Precision integrated circuits may be more susceptible to damage because very small parametric changes could cause the device not to meet its published specifications.

ORDERING INFORMATION⁽¹⁾

DEVICE NUMBER	CURRENT OUTPUT	ORDERABLE NUMBER
TPS55332	0.5 A	TPS55332QPWPRQ1

(1) For the most current package and ordering information, see the Package Option Addendum at the end of this document, or see the TI website at www.ti.com.

ABSOLUTE MAXIMUM RATINGS⁽¹⁾

		VALUE	UNIT
V _I	Unregulated input voltages (VIN, EN) ⁽²⁾ (SW) ⁽²⁾ ⁽³⁾	-0.3 to 60	V
	Unregulated input voltages (BOOT)	-0.3 to 8	V
V _{Reg}	Regulated voltage	-0.3 to 60	V
	Logic level signals (RT, $\overline{\text{RST}}$, SYNC, VSENSE, RST_TH) ⁽²⁾	-0.3 to 5.5	V
	Logic level signals (SS, Cdly) ⁽²⁾	-0.3 to 8	V
	Logic level signals (COMP) ⁽²⁾	-0.3 to 7	V
T _J	Operating virtual junction temperature range	-40 to 150	°C
T _S	Storage temperature range	-55 to 165	°C
ESD	Electrostatic discharge HBM ⁽⁴⁾	2	kV

- (1) Stresses beyond those listed under *absolute maximum ratings* may cause permanent damage to the device. These are stress ratings only and functional operation of the device at these or any other conditions beyond those indicated under *recommended operating conditions* is not implied. Exposure to absolute-maximum-rated conditions for extended periods may affect device reliability.
- (2) All voltage values are with respect to GND.
- (3) Absolute negative voltage on these pins not to go below -0.6 V.
- (4) The human body model is a 100-pF capacitor discharged through a 1.5-kΩ resistor into each pin.

RECOMMENDED OPERATING CONDITIONS

		MIN	MAX	UNIT
V _I	Unregulated buck supply input voltage (VIN, EN)	3.6	40	V
V _{Reg}	Output voltage range	2.5	50	V
	Bootstrap capacitor (BOOT)	3.6	8	V
	Switched outputs (SW)	3.6	52	V
	Logic level inputs ($\overline{\text{RST}}$, VSENSE, RST_TH, Rslw, SYNC, RT)	0	5.25	V
	Logic level inputs (SS, Cdly, COMP)	0	6.5	V
θ _{JA}	Thermal resistance, junction to ambient ⁽¹⁾		35	°C/W
θ _{JC}	Thermal resistance, junction to case ⁽²⁾		10	°C/W
T _J	Operating junction, temperature range ⁽³⁾	-40	150	°C

- (1) This assumes a JEDEC JESD 51-5 standard board with thermal vias and high-K profile – See PowerPAD section and application note from Texas Instruments ([SLMA002](#)) for more information.
- (2) This assumes junction to exposed PAD.
- (3) This assumes $T_A = T_J - \text{power dissipation} \times \theta_{JA}$ (junction to ambient).

DC ELECTRICAL CHARACTERISTICS

VIN = 7 V to 40 V, EN = High, T_J = –40°C to 150°C (unless otherwise noted)

TEST	PARAMETER		TEST CONDITIONS	MIN	TYP	MAX	UNIT
INPUT VOLTAGE (VIN)							
Info	VIN	Supply voltage on VIN line	Normal mode – buck mode after start up	1.5		40	V
PT	I _{q-Normal}	Bias current, normal mode			4.2	8	mA
PT	I _{SD}	Shutdown	EN = 0 V, VIN = 12 V, T _A = 25°C		2	4	μA
SWITCH MODE SUPPLY; VReg/Vout							
Info	V _{Reg}	Regulator output	VSENSE = 2.5 V in boost mode ⁽¹⁾	Vin×1.05		50	V
CT	VSENSE	Feedback voltage	VIN = 12 V	2.463	2.5	2.538	V
PT	R _{DS(on)}	Internal switch resistance	Measured across V _{SWD} and GND			500	mΩ
Info	I _{CL}	Switch current limit	VIN = 7 V to 28 V		5.7		A
Info	t _{ON-Min}	Duty cycle pulse width	Bench mode = 500 kHz	50	100	150	ns
	t _{OFF-Min}			50	100	150	
PT	f _{sw}	Switch mode frequency	Set using external resistor on RT pin	80		2200	kHz
PT	f _{sw}	Internal oscillator frequency		–10%		10%	
ENABLE (EN)							
PT	V _{IL}	Low input threshold				0.7	V
PT	V _{IH}	High input threshold		1.7			V
PT	I _{Leakage}	Leakage into EN terminal	EN = 24 V		35		μA
RESET DELAY (Cdly)							
PT	I _O	External capacitor charge current	EN = high	1.4	2	2.6	μA
PT	V _{Threshold}	Switching threshold	Output voltage in regulation	1.8	2	2.4	V
RESET OUTPUT (RST)							
Info	t _{rdly}	POR delay timer	Based on Cdly capacitor, Cdly = 4.7 nF	3.6		7	ms
PT	RST_TH	Reset threshold for V _{Reg}	Check RST output	0.768		0.832	V
PT	t _{RSTdly}	Filter time	Once VRST_TH or OV_TH is detected, delay before RST is asserted low	10	20	35	μs
SYNCHRONIZATION (SYNC)							
PT	V _{SYNC}	Low-level input voltage, V _{IL}				0.7	V
PT		High-level input voltage, V _{IH}		1.7			V
PT	I _{Leakage}	Leakage current	SYNC = 5 V		65	95	μA
PT	SYNC	Input clock	VIN = 12 V, f _{sw} < f _{ext} < 2 × f _{sw}	80		2200	kHz
Info	SYNC _{trans}	External clock to internal clock	No external clock, VIN = 12 V		32		μs
Info	SYNC _{trans}	Internal clock to external clock	External clock = 500 kHz, VIN = 12 V		2.5		μs
CT	SYNC _{CLK}	Minimum duty cycle		30%			
CT	SYNC _{CLK}	Maximum duty cycle				70%	
Rslew							
CT	I _{Rslew}	Slew current	R _{slew} = 50 kΩ, Calculated not measured		20		μA
CT	I _{Rslew}	Slew current	R _{slew} = 50 kΩ, Calculated not measured		100		μA
Soft Start (SS)							
PT	I _{ss}	Soft start current		40	50	60	μA

(1) Voltage ratio of input to output in boost mode is 1:10 (max) and up to 50 V output max.

TPS55332-Q1

SLVS939A – JUNE 2009 – REVISED JUNE 2010

www.ti.com

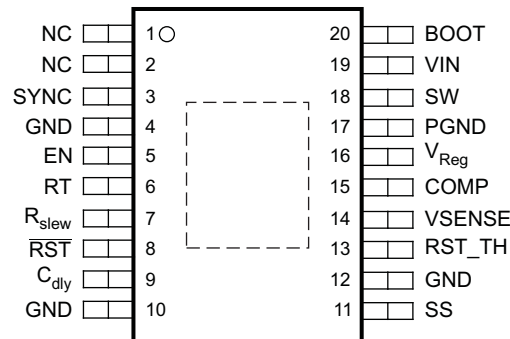
DC ELECTRICAL CHARACTERISTICS (continued)

VIN = 7 V to 40 V, EN = High, T_J = –40°C to 150°C (unless otherwise noted)

TEST	PARAMETER	TEST CONDITIONS	MIN	TYP	MAX	UNIT
THERMAL SHUTDOWN						
CT	T _{SD}	Thermal shutdown junction temperature		175	200	°C
CT	T _{HYS}	Hysteresis		30		°C
PT: Production tested CT: Characterization tested only, not production tested Info: User Information only, not production tested						

DEVICE INFORMATION

PWP Package
(Top View)

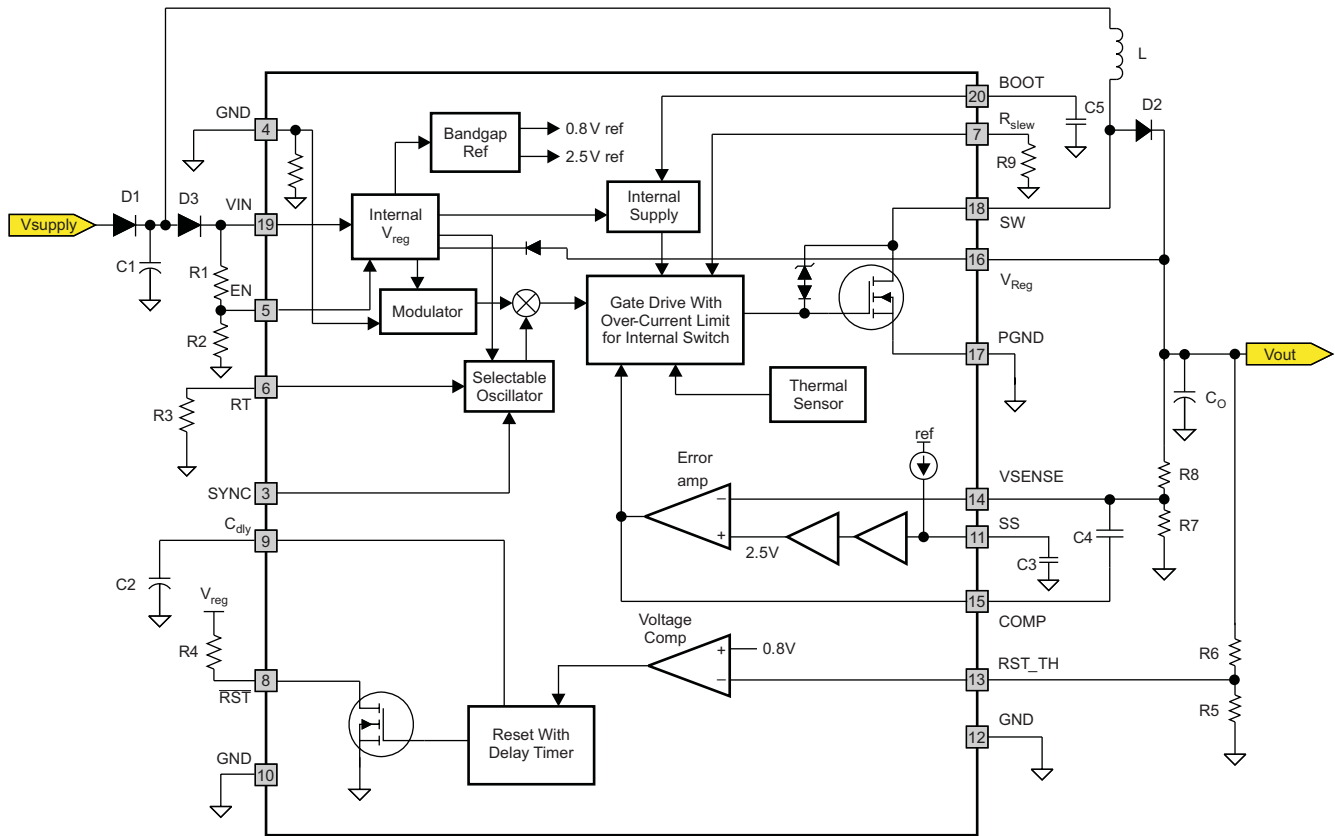


P0021-03

PIN FUNCTIONS

PIN		I/O	DESCRIPTION
NAME	NO.		
NC	1	NC	Connect to ground
NC	2	NC	Connect to ground
SYNC	3	I	External synchronization clock input, 62-kΩ (typ) pull-down resistor
GND	4	I	Connect to ground
EN	5	I	Enable input, high voltage tolerant
RT	6	O	Resistor to program internal oscillator frequency
R _{slew}	7	O	Internal switch programmable slew rate control
RST	8	O	Reset output open drain (active low)
C _{dly}	9	O	Reset delay timer (programmed by external capacitor)
GND	10	O	Analog ground, DVSS and SUB
SS	11	O	Programmable soft-start. (external capacitor)
GND	12	I	Connect to ground
RST_TH	13	I	Input for RESET circuitry to detect undervoltage on output (adjustable threshold)
VSENSE	14	I	Feedback input for voltage mode control
COMP	15	O	Error amplifier output
V _{Reg}	16	I	Internal low side FET to load output during start up or limit over shoot
PGND	17	O	Power ground connection
SW	18	I/O	Switched drain output/input
VIN	19	I	Unregulated input voltage
BOOT	20	O	Bootstrap capacitor pump

TYPICAL APPLICATION SCHEMATIC (Boost Converter)

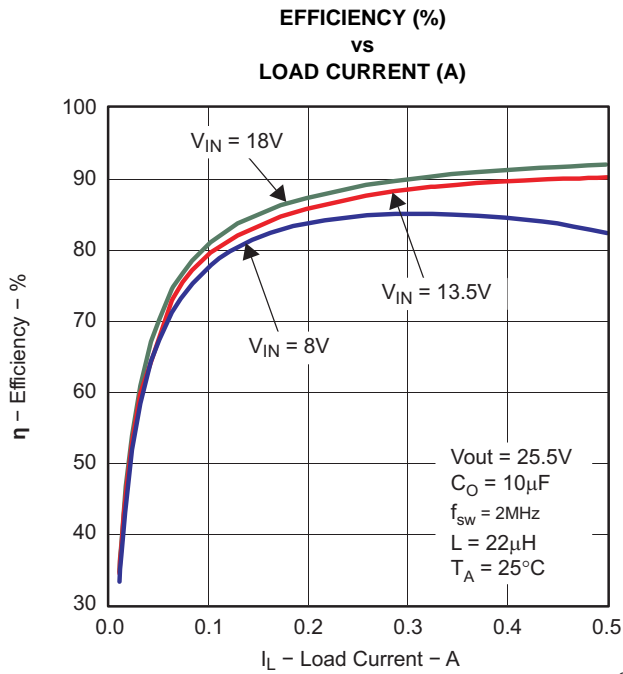


NOTE: An integrated forward biased diode is between V_{Reg} and V_{IN} . V_{Reg} is tied to V_{out} and used to bias V_{IN} when $V_{out} > V_{supply}$. However, the minimum V_{supply} operating voltage at power-up (when $V_{out} < V_{supply}$) is $3.6\text{ V} + 2$ diode drops. After power-up (when $V_{out} > V_{supply}$) the minimum $V_{supply} = 1.5\text{ V} + 2$ diode drops. $V_{Reg} < 5.8\text{ V}$ and $V_{IN} < 3.6\text{ V}$. Converter non-operational.

NOTE: V_{IN} is the voltage at V_{IN} before $V_{Reg} > V_{supply}$.

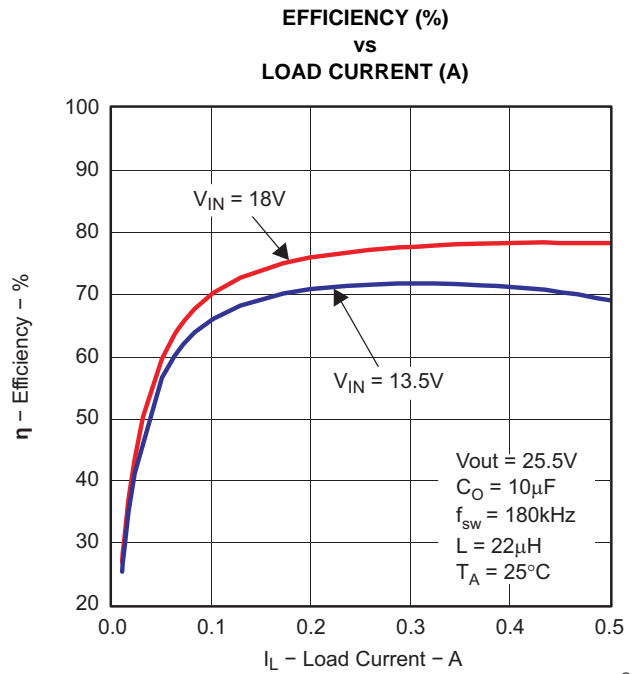
Figure 1. TPS55332 Functional Block Diagram

TYPICAL CHARACTERISTICS



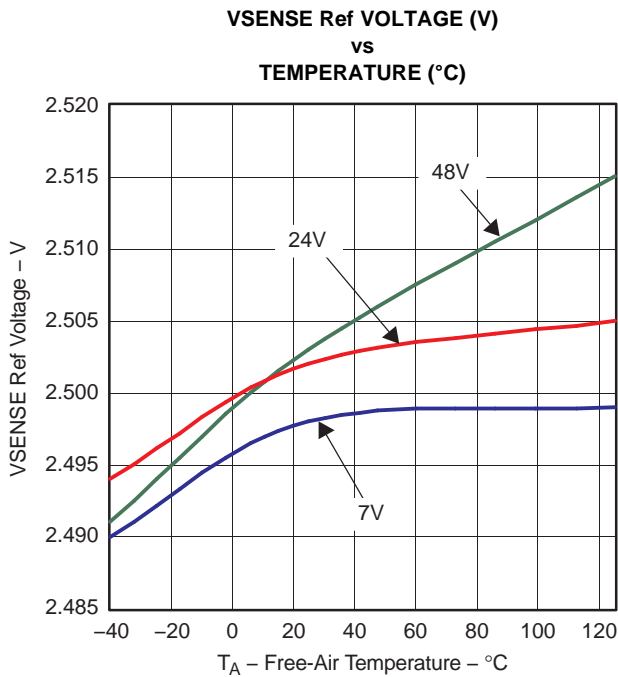
G001A

Figure 2.



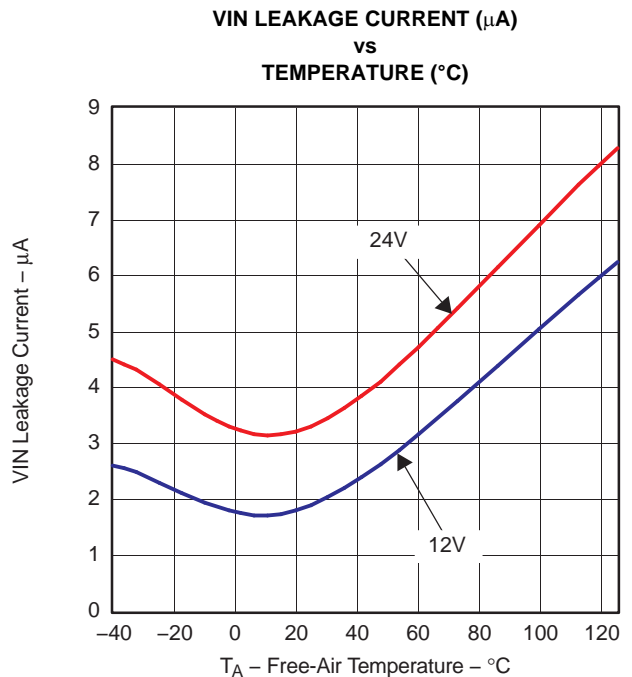
G002A

Figure 3.



G003

Figure 4.



G004

Figure 5.

TYPICAL CHARACTERISTICS (continued)

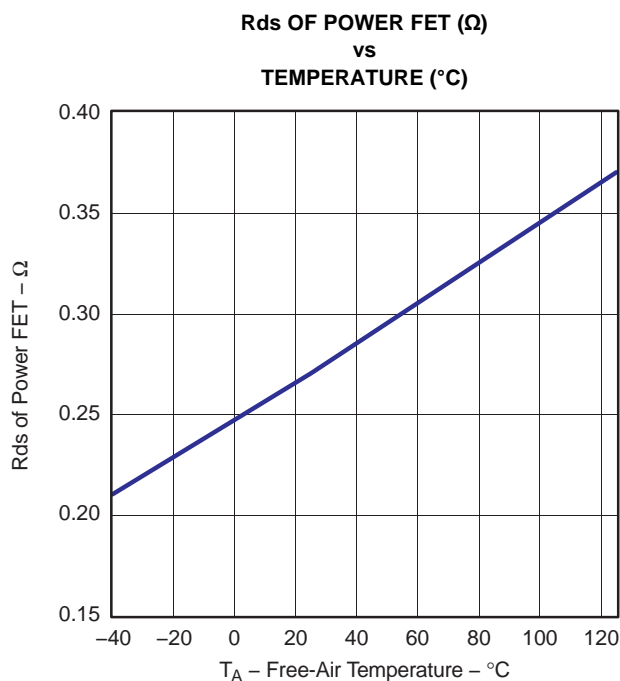


Figure 6.

G005

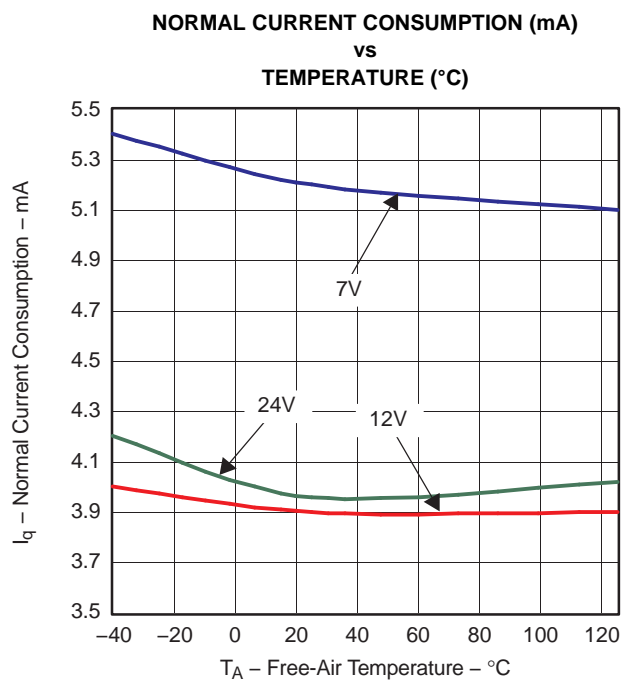


Figure 7.

G006

OVERVIEW

The TPS55332 operates as a step up (boost) converter; the feedback concept is voltage mode control using the VSENSE terminal, with cycle-by-cycle current limit.

The voltage supervisory function for power-on-rest during system power-on is monitoring the output voltage, and once this has exceeded the threshold set by RST_TH, a delay of 1.0 ms/nF (based on the capacitor value on the Cdly terminal) is invoked before the RST line is released high. Conversely, on power down, once the output voltage falls below the same set threshold (ignoring hysteresis), RST is pulled low only after a de-glitch filter of approximately 20 μs (typ) expires. This is implemented to prevent RST from being triggered due to fast transient noise on the output supply.

Soft start is activated on every enable cycle and limits the power stored in the inductor by duty cycle control. Soft start duration is set by an external capacitor on the SS terminal.

If thermal shutdown is invoked due to excessive power dissipation, the internal switch is disabled and the regulated output voltage starts to decrease. Depending on the load line, the regulated voltage can decay and the RST_TH threshold may assert RST output low after the output voltage drops below the set threshold.

DETAILED DESCRIPTION

The TPS55332 is a step up (boost) dc/dc converter using voltage-control mode scheme. The following sections include descriptions of the individual pin functions.

Input Voltage (VIN)

The VIN pin is the input power source for the TPS55332. This pin must be externally protected against voltage level transients greater than 60 V and reverse battery. In boost mode the input current drawn from this pin is pulsed, with fast rise and fall times. Therefore, this input line requires a filter capacitor to minimize noise. Additionally, for EMI considerations, an input filter inductor may also be required.

TPS55332-Q1

SLVS939A – JUNE 2009 – REVISED JUNE 2010

www.ti.com

Output Voltage (V_{out})

The output voltage, V_{out}, is generated by the converter supplied from the battery voltage V_{IN} and external components (L, C). The output is sensed through an external resistor divider and compared with an internal reference voltage.

The value of the adjustable output voltage in boost mode is selectable between V_{IN} × 1.05 to 50 V if the minimum ON time (t_{on}) and minimum OFF times are NOT violated by choosing the external resistors, according to the following relationship:

$$V_{out} = V_{ref} \left(1 + \frac{R8}{R7} \right) \quad (\text{Volts}) \quad (1)$$

Where:

R7 and R8 are feedback resistors

V_{ref} = 2.5 V (typ)

The internal reference voltage V_{ref} has a ±1.5% tolerance. The overall output voltage tolerance is dependent on the external feedback resistors. To determine the overall output voltage tolerance, use the following relationship:

$$\text{tol}_{V_{out}} = \text{tol}_{V_{ref}} + \left(\frac{R8}{R8+R7} \right) \times (\text{tol}_{R8} + \text{tol}_{R7}) \quad (2)$$

Typically, an output capacitor within the range of 10 μF to 400 μF is used. This terminal has a filter capacitor with low ESR characteristics in order to minimize output ripple voltage.

Regulated Supply Voltage (V_{Reg})

There is an integrated forward biased diode between V_{Reg} and V_{IN}. V_{Reg} is tied to V_{out} and used to bias V_{IN} when V_{out} > V_{supply}.

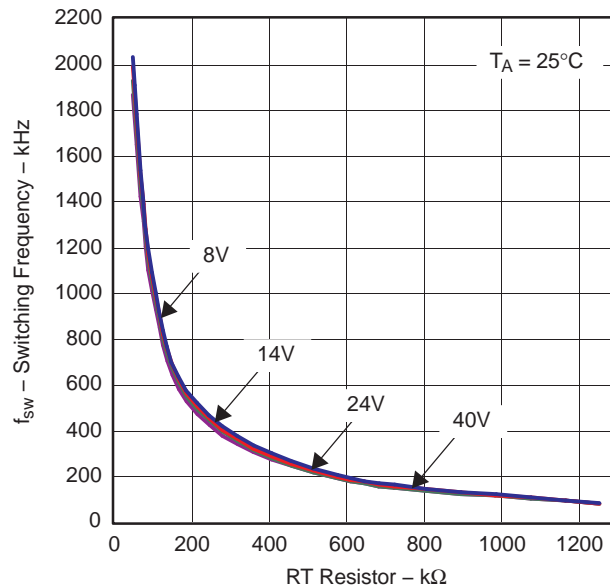
Over-Current Protection (SW)

Over-current protection is implemented by sensing the current through the NMOS switch FET. The sensed current is then compared to a current reference level representing the over-current threshold limit. If the sensed current exceeds the over-current threshold limit, the over-current indicator is set true. The system ignores the over-current indicator for the leading edge blanking time at the beginning of each cycle to avoid any turn-on noise glitches.

Once the over-current indicator is set true, over-current protection is triggered. The MOSFET is turned off for the rest of the cycle after a propagation delay. The over-current protection scheme is called cycle-by-cycle current limiting. If the sensed current continues to increase during cycle-by-cycle current limiting, the temperature of the device starts to rise, and the TSD kicks in and shuts down switching until the device cools down.

Oscillator Frequency (RT)

The oscillator frequency is selectable by means of a resistor placed at the RT pin. The switching frequency (f_{sw}) can be set in the range of 80 kHz to 2.2 MHz. In addition, the switching frequency can be imposed externally by a clock signal (f_{ext}) at the SYNC pin with f_{sw} < f_{ext} < 2 × f_{sw}. In this case the external clock overrides the switching frequency determined by the RT pin, and the internal oscillator is clocked by the external synchronization clock input.



G007

Enable / Shutdown (EN)

The Enable pin provides electrical on/off control of the regulator. Once the Enable pin voltage exceeds the threshold voltage, the regulator starts operation and the internal soft start begins to ramp. If the Enable pin voltage is pulled below the threshold voltage, the regulator stops switching and the internal soft start resets. Connecting the pin to ground or to any voltage less than 0.7 V disables the regulator and activates shutdown mode. The quiescent current of the TPS55332 in shutdown mode is typically < 2 μA. This pin has to have an external pull up or pull down to change the state of the device.

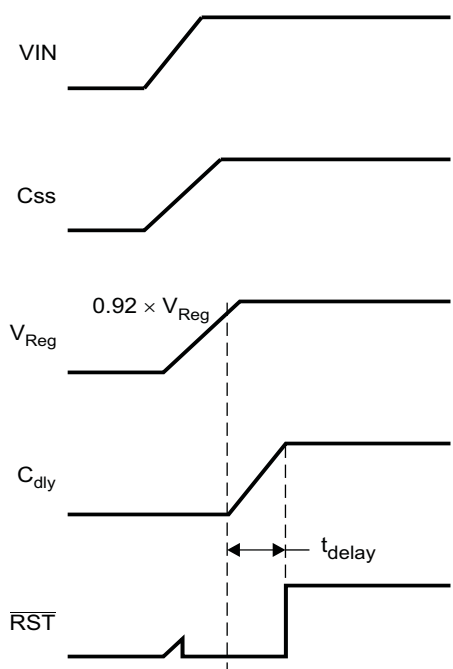
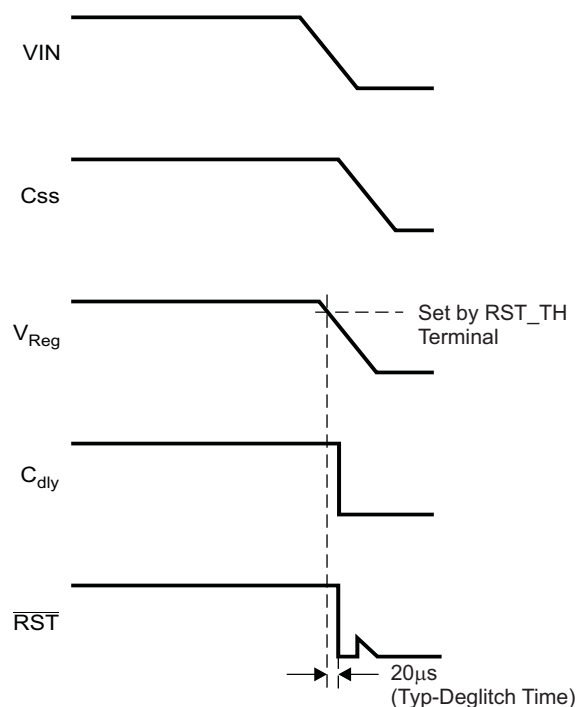
Reset Delay (C_{dly})

The Reset delay pin sets the desired delay time for asserting the $\overline{\text{RST}}$ pin high after the supply has exceeded the programmed Vreg_RST voltage. The delay may be programmed in the range of 2.2 ms to 200 ms using capacitors in the range of 2.2 nF to 200 nF. The delay time is calculated using [Equation 3](#):

$$t_{\text{delay}} = t_{\text{rdly}} \times C = \left(\frac{1 \text{ ms}}{\text{nF}} \right) \times C, \text{ Where } C = \text{capacitor on } C_{\text{dly}} \text{ pin} \quad (3)$$

Reset Pin ($\overline{\text{RST}}$)

The $\overline{\text{RST}}$ pin is an open-drain output. The power-on reset output is asserted low until the output voltage exceeds the programmed Vreg_RST voltage threshold and the reset delay timer has expired. Additionally, whenever the Enable pin is low or open, $\overline{\text{RST}}$ is immediately asserted low regardless of the output voltage. There is a reset de-glitch timer to prevent a reset being invoked due to short negative transients on the output line. If a thermal shut down occurs due to excessive thermal conditions this pin is asserted low, where switching is commanded off and the output drops below the rest threshold set on the RST_TH terminal.

Power On Condition/Reset Line

Power Down Condition/Reset Line


T0435-01

Boost Capacitor (BOOT)

This capacitor provides gate drive voltage for the Internal MOSFET switch. X7R or X5R grade dielectrics are recommended due to their stable values over temperature.

Soft Start (SS)

To limit the start-up inrush current, an internal soft start circuit is used to ramp up the reference voltage from 0 V to its final value. The switch duty cycle starts with narrow pulses and increases gradually as the voltage on the C_{SS} capacitor ramps up. The output current on this pin charges the capacitor up to 6.6 V (typ).

The boost soft start is dependent on the gain bandwidth (GBW) of the loop. Therefore, in this configuration the C_{SS} equation only holds when:

$$\frac{1}{\text{GBW}} < 10 \times T_{\text{CSS}} \quad (4)$$

GBW is dependent on the compensation technique used. TYPE1 is the slowest.

Where:

T_{CSS} is the time it takes for V_{CSS} to reach ~3.5 V

GBW = f_c of the converter

$$\text{Time } (T_{\text{CSS}}) = \frac{C \times 3.5}{40 \times 10^{-6}} \quad (\text{sec}) \quad (5)$$

Where:

C = Capacitor C_{SS} on the SS pin

Synchronization (SYNC)

The SYNC pin inputs an external clock signal that synchronizes the switching frequency. The synchronization input over-rides the internally fixed oscillator signal. The synchronization signal has to be valid for approximately 2 clock cycles (pulses) before the transition is made for synchronization with the external frequency input. If the external clock input is does NOT transition low or high for 32 μ s (typ), the system defaults to the internal clock set by the **Rosc pin**.

Regulation Voltage (VSENSE)

This pin is used to program the regulated output voltage based on a resistor feedback network monitoring the Vout voltage. The selected ratio of R7 and R8 sets the output voltage.

Reset Threshold (RST_TH)

This pin is programmable to set the under-voltage monitoring of the regulated output voltage. The resistor combination of R5 and R6 is used to program the threshold for detection of under-voltage.

$$\text{Reset Threshold} = \text{RST_TH} = V_{\text{ref}} (1 + (R6/R5)), \quad (6)$$

Recommended range: 70% to 92% of the regulation voltage

The internal reference Vref is set at 0.8 V \pm 1.5%

Slew Rate Control (Rslew)

This pin controls the switching slew rate of the internal power NMOS. The slew rate is set by an external resistor with a slew rate range shown for rise and fall times. The range of rise time t_r = 20 ns to 60 ns and fall time t_f = 60 ns to 250 ns, with Rslew range of 5 k Ω to 20 k Ω (see [Figure 8](#) and [Figure 9](#)).

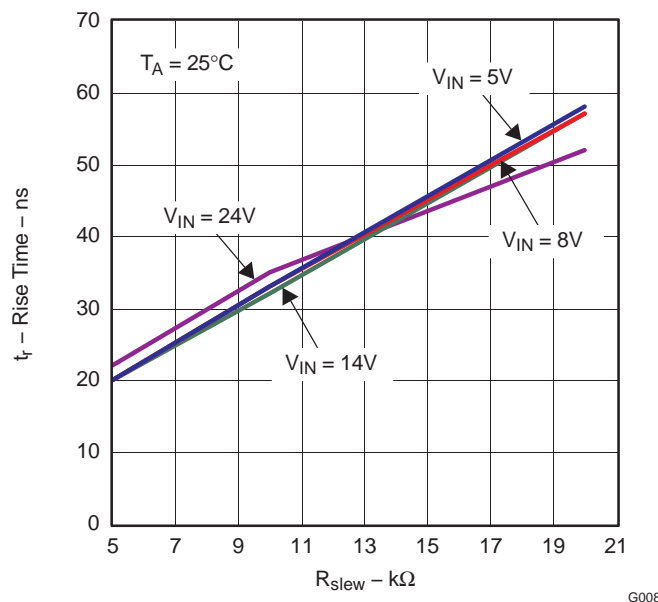


Figure 8. FET Rise Time (t_r)

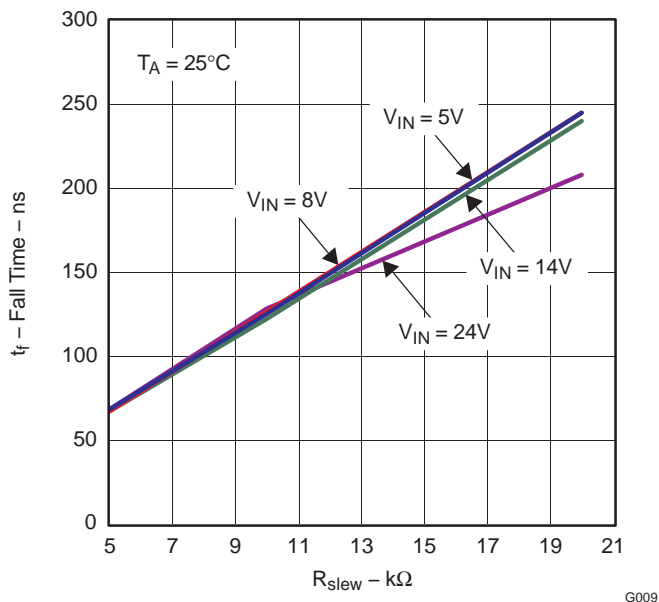


Figure 9. FET Fall Time (t_f)

Thermal Shutdown

The TPS55332 protects itself from overheating with an internal thermal shutdown circuit. If the junction temperature exceeds the thermal shutdown trip point, the MOSFET is turned off. The device is restarted under control of the slow start circuit automatically when the junction temperature drops below the thermal shutdown hysteresis trip point.

Loop Control Frequency Compensation

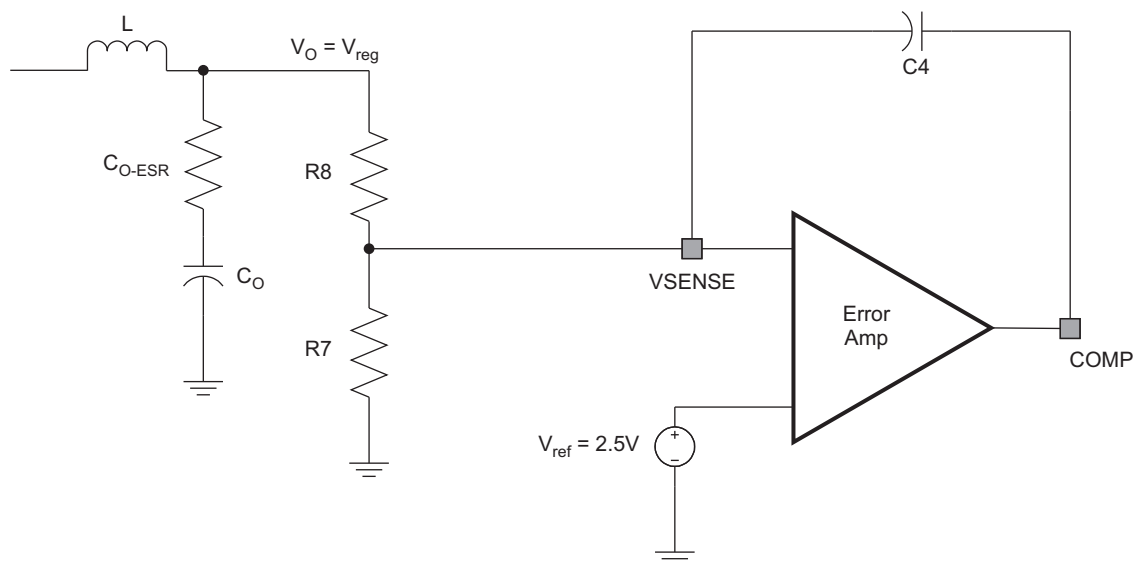


Figure 10. Type 1 Compensation

S0402-01

The boost converter operating in continuous conduction mode (CCM) has a right-half-plane (RHP) zero with the transfer function. The RHP zero causes the converter to respond to a circuit disturbance in the opposite direction to that needed to support the output load transition (positive feedback). This complicates loop compensation and limits the converter bandwidth, and requires an increase in the output filter capacitor.

The converter can be designed to operate in discontinuous conduction mode (DCM) with a smaller inductance value for the inductor over the full range of the operating conditions. This may be difficult to achieve and other issues like instability may occur if the converter enters CCM.

The inductor saturation current I_{sat} must satisfy the following:

$$I_{sat} > \frac{I_{Load}}{D \times \text{efficiency}} + \left(\frac{V_{IN}}{L} \right) \times 15\mu\text{s} \quad (7)$$

Where:

$$D = V_{IN}/V_O$$

The converter designed for CCM with external loop compensation factors the maximum output load current, the ESR of the output filter capacitor, the inductance used for the inductor, the input voltage range, and the output voltage required.

DCM Operation

The control to output transfer function for the boost in DCM has a single pole. The energy in the inductor is completely discharged during every switching cycle (inductor current is reduced to zero). The small inductor value for DCM compared to CCM operation shifts the RHP zero frequency close to the switching frequency, see [Equation 11](#). In this mode, the RHP is not a factor for compensation of the feedback loop, additionally the frequency of the pole associated with the inductor is also increased to a higher frequency.

The maximum inductance to keep the boost converter running in DCM over the full operating range is given by [Equation 8](#):

$$L_{max} = \frac{0.8 \times D_{CCM} \times (1 - D_{CCM})^2 \times \left(\frac{V_O}{I_O} \right)}{2 \times f_{sw}} \quad (\text{Henries}) \quad (8)$$

Where:

$$D_{CCM} = 1 - \left(\frac{V_{IN}}{V_O} \right) \quad (9)$$

V_O = Output voltage

I_O = Maximum output current

V_{IN} = Minimum input voltage

Three elements of the output capacitor contribute to the impedance (output voltage ripple), ESR, ESL, and capacitance.

During discontinuous conduction mode operation, the minimum capacitance needed to limit the voltage ripple due to the capacitance of the capacitor is given by [Equation 10](#):

$$C_{dcm-min} \geq \frac{I_{O(max)} \times \left[1 - \sqrt{\frac{2 \times L}{R \times T_s}} \right]}{f_{sw} \times \Delta V_O} \quad (\text{Farads}) \quad (10)$$

Where:

R = min load resistance,

T_s = clock period,

f_{sw} = switching frequency,

ΔV_O = output voltage ripple desired

The ESR of the output capacitor needed to limit the output ripple voltage is given by [Equation 11](#):

$$\text{ESR} \leq \frac{\Delta V_O}{\Delta I_O} \quad (\text{Ohms}) \quad (11)$$

CCM Operation

In continuous conduction mode of operation the RHP zero complicates the loop compensation. This limits the bandwidth of the converter and may require a larger value output filter capacitor to compensate for loop response. The benefit of this mode is a lower switch and inductor current compared to DCM. This results in reduced power dissipation and size of the power switch, input capacitor, and output capacitor. The output filter capacitor value may need to be increased such that

$$f_{LC} \leq 0.1 f_{RHP}$$

The following requirements for compensating the loop have to be satisfied for the control-to-output gain of a CCM boost operation.

$$f_{LC} = 0.1 \times f_{RHP\text{-zero}} \quad (12)$$

$$\frac{f_{RHP\text{-zero}}}{f_{LC}} > M \quad (13)$$

Where:

M = 10 – for tantalum capacitors

M = 15 – for ceramic capacitors

$$f_C = 0.33 \times f_{RHP\text{-zero}} \quad (14)$$

$$f_{LC} = \frac{1}{2\pi\sqrt{LC_0}} \times \frac{V_{IN}}{V_O} \quad (\text{Hz}) \quad (15)$$

Where:

L = Inductor value,

C₀ = Output capacitor,

V_{IN} = Input voltage, and

V_O = Output voltage

$$f_{RHP\text{-zero}} = \frac{R}{2\pi L} \times \left(\frac{V_{IN}}{V_O} \right)^2 \quad (\text{Hz}) \quad (16)$$

$$f_{ESR} = \frac{R}{2\pi C_0 \times \text{ESR}} \quad (\text{Hz}) \quad (17)$$

The feed-forward compensation network type 1 is calculated using the pole frequency in [Equation 18](#):

$$f_p = \frac{1}{2\pi C_4 R_8} \quad (\text{Hz}) \quad (18)$$

The minimum output capacitor required for a desired output ripple voltage is given by [Equation 19](#):

$$C_{(\text{ccm min})} \geq \frac{I_{O(\text{max})}}{\Delta V_O} \left(1 - \frac{V_{IN}}{V_O} \right) \frac{1}{f_{sw}} \quad (\text{Farads}) \quad (19)$$

The minimum inductor value needed to ensure CCM from maximum to 25% of maximum load is determined by choosing the value of the inductor to have a ripple current of approximately 40% of the maximum output load current at maximum input voltage of the system.

$$\Delta I_L = 0.4 \times I_O \quad (\text{Amperes}) \text{ for } V_{IN\text{-max}} \quad (20)$$

To maintain ccm operation with at least a 10% of maximum load current ($I_{O\text{-DLM}} \geq 0.1 \times I_{O\text{-max}}$) The inductor is given by [Equation 21](#):

$$L = \frac{V_{IN}}{2 \times I_{O-DCCM} \times f_{sw}} \times D_{CCM} \times (1 - D_{CCM}) \quad (\text{Henries}) \quad (21)$$

Where:

$$D_{CCM} = 0.5,$$

V_{IN} = Typical operating voltage

Choosing an inductor value less than the one determined by [Equation 21](#) may cause the converter to go into DCM operation during low output currents. This may not be a problem if the loop compensation allows for good phase margin.

The ripple current flowing through the output capacitor ESR causes power dissipation in the capacitor. [Equation 17](#) gives the RMS value of the ripple current flowing through the output capacitance.

$$I_{CRMS} = I_O \times \sqrt{\frac{D}{1 - D}} \quad (22)$$

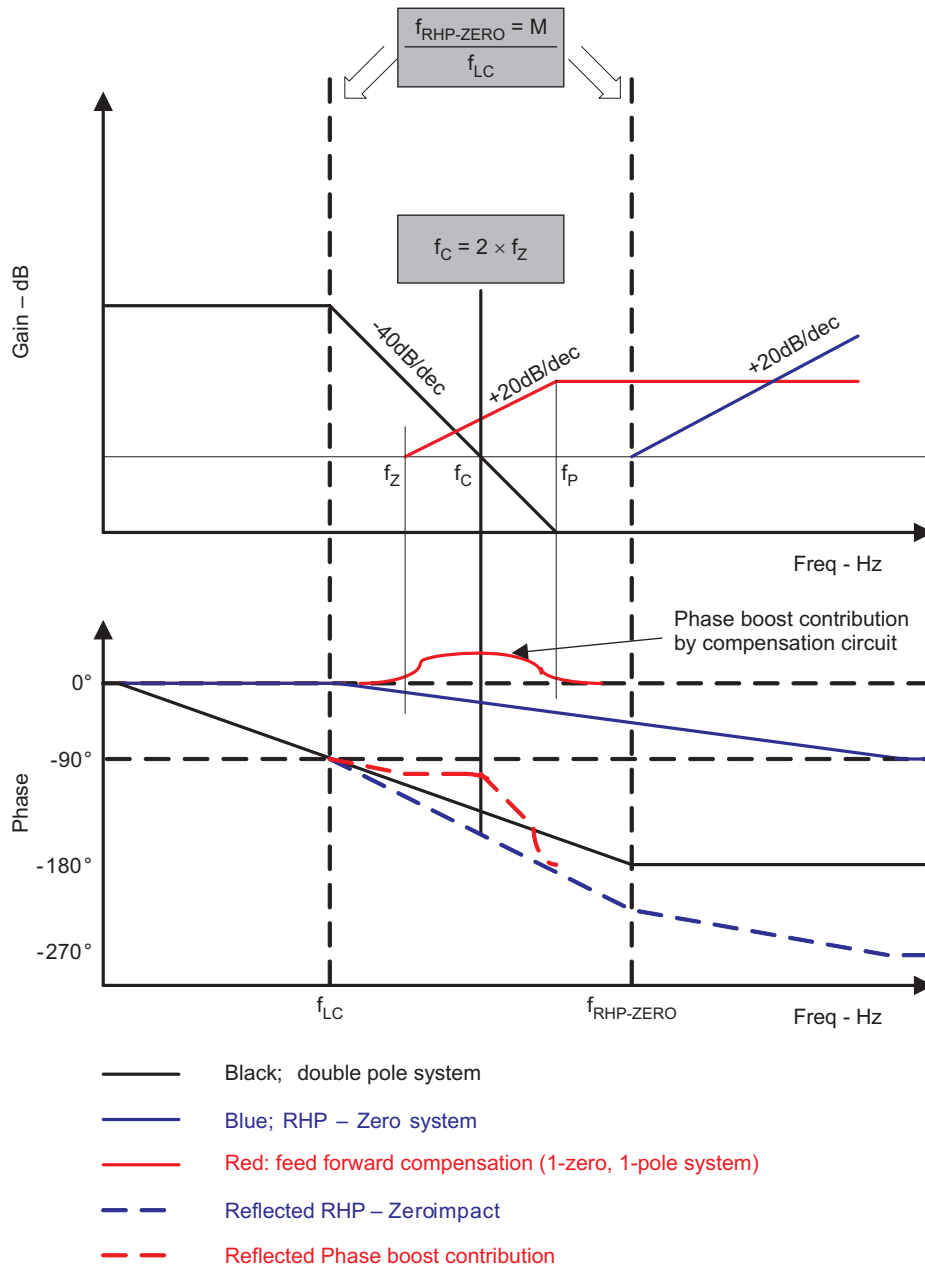
Where:

D = Duty cycle

For continuous inductor current mode operation, the ESR needed to limit the ripple voltage ΔV_O to volts peak-peak is:

$$ESR \leq \frac{\Delta V_O}{\frac{I_{O(max)}}{1 - D_{max}} + \frac{\Delta I_O}{2}} \quad (\text{Ohms}) \quad (23)$$

Loop Compensation for Stability Criteria



G010

The Bode-Plot above is an illustration of stability criteria and is used to ensure converter performance based on the type of loop compensation implemented.

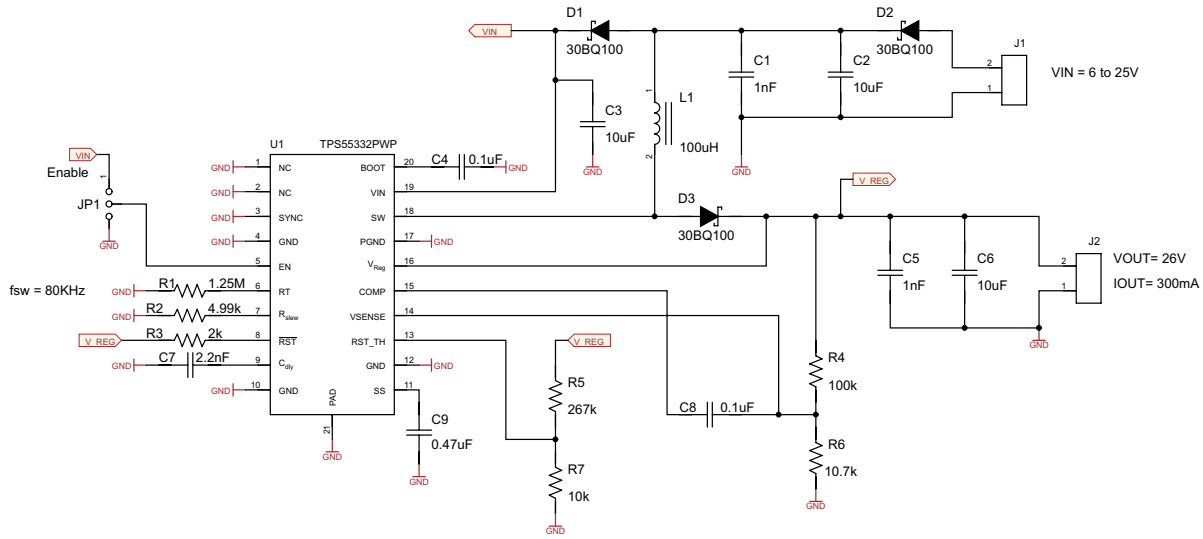
APPLICATION INFORMATION

Design Guide – Step By Step Design Procedure

The following table lists the requirements of a switching regulator design.

PARAMETER	VALUE
Input voltage, V_{IN}	6 V to 25 V, with typical operating voltage = 14 V
Output voltage, V	26 V \pm 2%
Maximum output current, I_O	0.3 A
Transient response 0A to 0.25A	5%
Switching frequency, f_{sw}	80 kHz
Reset threshold	84% of output voltage
V_{O_ripple}	520 mV peak to peak at capacitance
$V_{O_transient}$	92% of output voltage

The design considers the converter to operate in CCM for most of the operating range and in DCM during less than 40% of the maximum output load rating.



S001

Output Capacitor (C_o)

Selection of the output capacitor in CCM using Equation 19 gives a capacitor value of 5.5 μ F. Select 10 μ F as standard value.

Output ripple voltage is a product of output capacitor ESR and ripple current on the output capacitor C_o .

The minimum output capacitor required for a desired output ripple voltage is given by:

$$V_{O_ripple\ ESR} = I_O \times ESR \quad (\text{Volts}) \tag{24}$$

$$C_{(\text{min ripple})} = \frac{I_O}{V_{O_ripple_cap}} \left(1 - \frac{V_{IN}}{V_O} \right) \frac{1}{f_{sw}} \tag{25}$$

The minimum capacitance needed for the output voltage ripple specification, using Equation 19, $C \downarrow (\text{min} \downarrow \text{ripple}) = 5.55 \mu$ F.

Using Equation 20, the transient response should be taken into consideration when selecting the output capacitor. The minimum capacitance required for a duration dt with a load transient I_{tran} to allow a maximum output voltage droop of V_{O_droop} is:

TPS55332-Q1

SLVS939A – JUNE 2009 – REVISED JUNE 2010

www.ti.com

$$C_{(\text{min tran})} = \frac{I_{\text{tran}} dt}{V_{O\text{droop}}} = \frac{I_{\text{tran}}}{V_{O\text{droop}}} \times \frac{1}{4 \times f_c} \quad (\text{Farads}) \quad (26)$$

Where,

dt is approximated to $1 / 4 \times f_c$ ($f_c = 10\text{-kHz}$ bandwidth)

This gives a capacitance of 6.25 μF . Allowing for tolerances and temperature variations, use a 10- μF standard value output capacitor.

Output Inductor Selection (L_o) for CCM

Using [Equation 21](#), the minimum lead current for ccm operation is 40% of maximum output current, $I_{O\text{-DCM}} = 120$ mA. The inductor value is estimated to be $L = 100 \mu\text{H}$.

Output Diode

The TPS55332 requires an external output diode which conducts when the power switch is turned off. This provides the path for the inductor current to the output capacitor. The important factors in selecting the rectifier are: fast switching, reverse breakdown voltage, current rating, and forward-voltage drop. The breakdown voltage should be greater than the maximum output voltage; the current rating must be two times the maximum switch output current. The forward drop of the diode should be low (schottky rectifier is preferred). The schottky diode is selected based on the appropriate power rating, which factors in the dc conduction losses; this is determined by [Equation 27](#):

$$P_{\text{diode}} = V_{fd} \times I_O \times (1 - D) \quad (\text{Watts}) \quad (27)$$

Where,

V_{fd} = forward conducting voltage of Schottky diode

Input Capacitor C_i

The TPS55332 requires an input ceramic de-coupling capacitor type X5R or X7R and bulk capacitance to minimize input ripple voltage. The dc voltage rating of this input capacitance must be greater than the maximum input voltage. The capacitor must have an input ripple current rating higher than the maximum input ripple current of the converter for the application; this is determined by [Equation 28](#).

The input capacitors for power regulators are chosen to have a reasonable capacitance to volume ratio and be fairly stable over the temperature range.

$$I_{I\text{-RMS}} = I_O \times \sqrt{\frac{V_O}{V_{I\text{-min}}}} \times \frac{(V_{I\text{-min}} - V_O)}{V_{I\text{-min}}} \quad (\text{Amperes}) \quad (28)$$

Output Voltage and Feedback Resistor Selection

In the design example 10 k Ω was selected for R7, using [Equation 1](#), R8 is calculated as 100.58 k Ω . The nearest standard value is 100 k Ω . Higher resistor values help improve converter efficiency at low output currents but may introduce noise immunity problems.

Reset Threshold Resistor Selection

Using [Equation 6](#), select resistor R5 as 10 k Ω then calculate R6. This gives a resistor value of 263 k Ω ; use a standard value of 267 k Ω . This sets the reset threshold at $0.86 \times 26\text{V}$.

Soft Start Capacitor

The soft start capacitor determines the minimum time to reach the desired output voltage during a power up cycle. This is useful when a load requires a controlled voltage slew rate and helps to limit the current draw from the input voltage supply line. [Equation 4](#) and [Equation 5](#) have to be satisfied in addition to the other conditions stated in the soft start section of this document. In this design a 47-nF capacitor is required to meet these criteria.

Loop Compensation Calculation

To make sure the right hand plane zero does not impact converter design in CCM operation based on $V_{IN} = 6\text{ V}$, $L = 100\ \mu\text{H}$, and $C_o = 10\ \mu\text{f}$, calculated values using Equation 16, the frequency is set at:

$$f_{RHP} = 7.339\text{ kHz}$$

The double pole associated with the L and Co components is given by Equation 15:

$$f_{LC} = 1.161\text{ kHz}$$

Using Equation 14:

$$f_C = 2.466\text{ kHz}$$

The zero due to the ESR of the capacitor is beyond the right hand plane zero frequency and can be calculated based on Equation 17 and Equation 23.

So to avoid any instability issues and from the frequency values calculated above the amplifier gain requires a gain roll off much earlier than the double pole of the L and Co components.

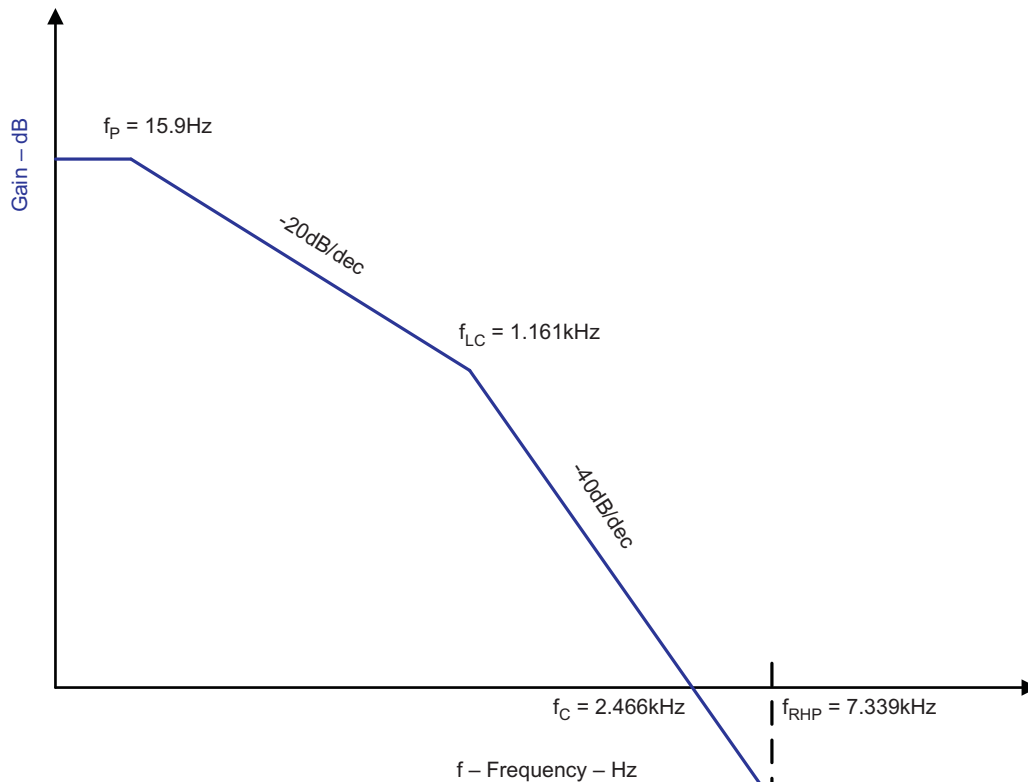
So the pole must be set at a much lower frequency to obtain a reasonable phase margin.

Using Equation 18 and choosing a frequency close to 2.9 Hz for the pole frequency, the capacitor value C8 for this application is:

$$C8 = 0.54\ \mu\text{F}$$

If $C8 = 1\ \mu\text{F}$ standard value, then $f_P = 15.9\text{ Hz}$.

Loop Compensation Response



G011

Since the pole due to the integrating capacitor C4 is dominant in the compensation loop, the frequency of the pole due to the inductor has no consequence in this situation.

Output Inductor Selection (Lo) for DCM

The maximum inductor value is calculated using [Equation 16](#) and gives a value of 15.4 μH , so 15 μH is the selected standard value. This allows the converter to be in DCM mode over the full operating range.

To operate in this mode with the calculated inductor value, the right hand plane zero frequency has moved to 45.6 kHz and the cut off frequency is 15.2 kHz.

The double pole due to the L and Co values is 2.9 kHz.

To compensate with either type II or type III loop compensation, the Bode Plot stability criteria must be satisfied.

Power Dissipation

The power dissipation losses are applicable for continuous conduction mode operation (CCM).

$$P_{\text{CON}} = I_o^2 \times R_{\text{dsON}} \times (1 - V_i/V_o) \quad (\text{conduction losses}) \quad (29)$$

$$P_{\text{SW}} = \frac{1}{2} \times V_o \times I_o / (1 - D) \times (t_r + t_f) \times f_{\text{SW}} \quad (\text{switching losses}) \quad (30)$$

$$P_{\text{Gate}} = V_{\text{drive}} \times Q_g \times f_{\text{sw}} \quad (\text{gate drive losses}), \text{ where } Q_g = 1 \times 10^{-9} \text{ (nC)} \quad (31)$$

$$P_{\text{IC}} = V_i \times I_q\text{-normal} \quad (\text{supply losses}) \quad (32)$$

$$P_{\text{Total}} = P_{\text{CON}} + P_{\text{SW}} + P_{\text{Gate}} + P_{\text{IC}} \quad (\text{watts}) \quad (33)$$

Where:

V_o = Output voltage

V_i = Input voltage

I_o = Output current

t_r = FET switching rise time ($t_r \text{ max} = 40 \text{ ns}$)

t_f = FET switching fall time

V_{drive} = FET gate drive voltage (typically $V_{\text{drive}} = 6 \text{ V}$ and $V_{\text{drive max}} = 8 \text{ V}$)

f_{sw} = Switching frequency

D = Duty cycle

For given operating ambient temperature, T_{Amb} :

$$T_J = T_{\text{Amb}} + R_{\text{th}} \times P_{\text{Total}} \quad (34)$$

For a given max junction temperature of $T_{\text{J-Max}} = 150^\circ\text{C}$:

$$T_{\text{Amb-Max}} = T_{\text{J-Max}} - R_{\text{th}} \times P_{\text{Total}} \quad (35)$$

Where:

P_{Total} = Total power dissipation (watts)

T_{Amb} = Ambient temperature in $^\circ\text{C}$

T_J = Junction temperature in $^\circ\text{C}$

$T_{\text{Amb-Max}}$ = Maximum ambient temperature in $^\circ\text{C}$

$T_{\text{J-Max}}$ = Maximum junction temperature in $^\circ\text{C}$

R_{th} = Thermal resistance of package in $(^\circ\text{C}/\text{W})$

Other factors NOT included in the information above which affect the overall efficiency and power losses are inductor ac and dc losses, and trace resistance and losses associated with the copper trace routing connection.

Layout

The recommended guidelines for PCB layout of the TPS55332 device are described in the following sections.

Inductor

Use a low EMI inductor with a ferrite type shielded core. Other types of inductors may be used, however they must have low EMI characteristics and be located away from the low power traces and components in the circuit.

Input Filter Capacitors

Input ceramic filter capacitors should be located in close proximity of the VIN terminal. Surface mount capacitors are recommended to minimize lead length and reduce noise coupling. Also low ESR and max input ripple current requirements must be satisfied.

Feedback

Route the feedback trace such that there is minimum interaction with any noise sources associated with the switching components. Recommended practice is to ensure the inductor is placed away from the feedback trace to prevent EMI noise sourcing.

Traces and Ground Plane

All power (high current) traces should be as thick and short as possible. The inductor and output capacitors should be as close to each other as possible. This reduces EMI radiated by the power traces due to high switching currents.

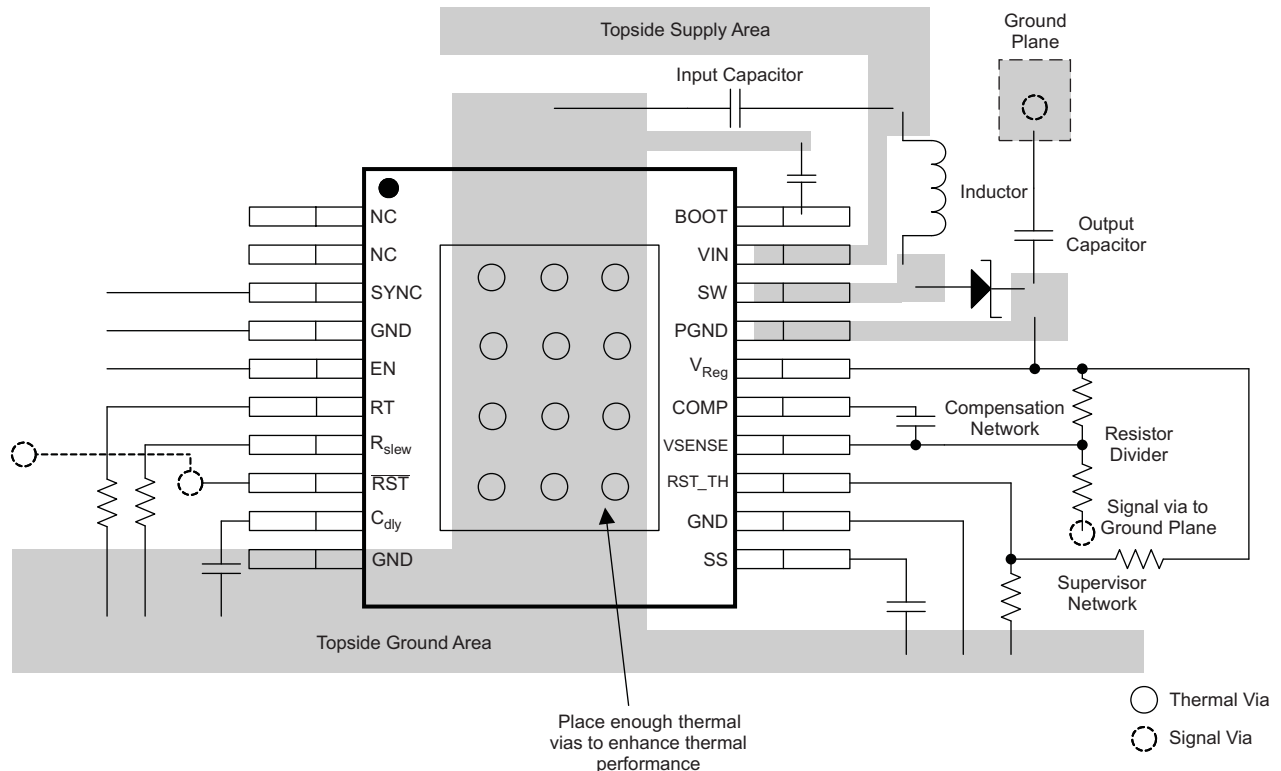
In a two sided PCB it is recommended to have ground planes on both sides of the PCB to help reduce noise and ground loop errors. The ground connection for the input and output capacitors and IC ground should be connected to this ground plane.

In a multi-layer PCB, the ground plane is used to separate the power plane (high switching currents and components are placed) from the signal plane (where the feedback trace and components are placed) for improved performance.

Also arrange the components such that the switching current loops curl in the same direction. Place the high current components such that during conduction the current path is in the same direction. This prevents magnetic field reversal caused by the traces between the two half cycles, helping to reduce radiated EMI.

The power ground terminal for the power FET must also be terminated to the ground plane in the shortest trace possible.

PCB Layout Example



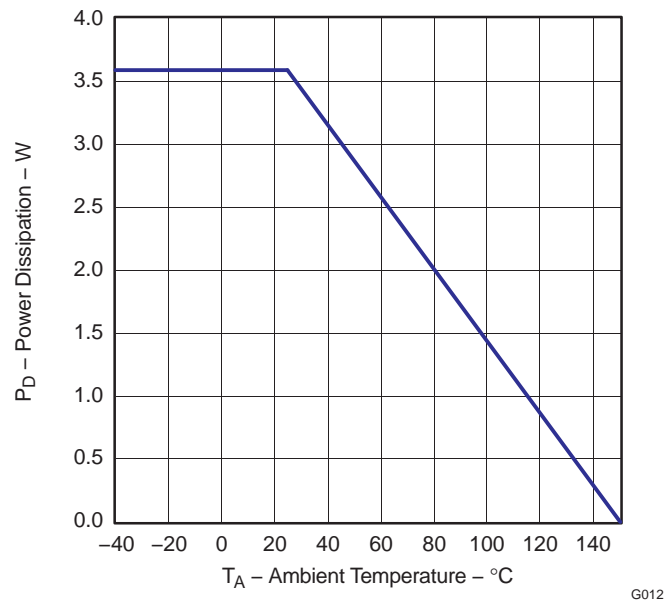
M0148-01

TPS55332-Q1

SLVS939A – JUNE 2009 – REVISED JUNE 2010

www.ti.com

Power Dissipation



NOTE: Power de-rating based on JEDEC JESD 51-5 standard board with thermal vias and high-k profile.

REVISION HISTORY

Changes from Original (June 2009) to Revision A	Page
• Changed title from 0.5-A, 60-V STEP UP DC/DC CONVERTER to 2.2-MHz, 60-V OUTPUT STEP UP DC/DC CONVERTER	1
• Added Peak Internal Switch Current: 5.7 A (typ) to Features	1
• Deleted Asynchronous Switch Mode Regulator with External Components (L and C), Output up to 0.5 A (max) in Boost Mode from Features	1
• Added $f_{sw} < f_{ext} < 2 \times f_{sw}$ to SYNC input clock test conditions	3
• Changed SYNC input clock max value from 1100 kHz to 2200 kHz	3
• Added $V_{out} = 25.5V$ to test conditions	6
• Added $V_{out} = 25.5V$ to test conditions	6
• Changed Output Voltage (V_{out}) description	8
• Changed internal reference V_{ref} from 2.5 V to 0.8 V	11
• Added inductor saturation current I_{sat} description	13

PACKAGING INFORMATION

Orderable Device	Status ⁽¹⁾	Package Type	Package Drawing	Pins	Package Qty	Eco Plan ⁽²⁾	Lead/Ball Finish	MSL Peak Temp ⁽³⁾
TPS55332QPWRQ1	ACTIVE	HTSSOP	PWP	20	2000	Green (RoHS & no Sb/Br)	CU NIPDAU	Level-3-260C-168 HR

⁽¹⁾ The marketing status values are defined as follows:

ACTIVE: Product device recommended for new designs.

LIFEBUY: TI has announced that the device will be discontinued, and a lifetime-buy period is in effect.

NRND: Not recommended for new designs. Device is in production to support existing customers, but TI does not recommend using this part in a new design.

PREVIEW: Device has been announced but is not in production. Samples may or may not be available.

OBSOLETE: TI has discontinued the production of the device.

⁽²⁾ Eco Plan - The planned eco-friendly classification: Pb-Free (RoHS), Pb-Free (RoHS Exempt), or Green (RoHS & no Sb/Br) - please check <http://www.ti.com/productcontent> for the latest availability information and additional product content details.

TBD: The Pb-Free/Green conversion plan has not been defined.

Pb-Free (RoHS): TI's terms "Lead-Free" or "Pb-Free" mean semiconductor products that are compatible with the current RoHS requirements for all 6 substances, including the requirement that lead not exceed 0.1% by weight in homogeneous materials. Where designed to be soldered at high temperatures, TI Pb-Free products are suitable for use in specified lead-free processes.

Pb-Free (RoHS Exempt): This component has a RoHS exemption for either 1) lead-based flip-chip solder bumps used between the die and package, or 2) lead-based die adhesive used between the die and leadframe. The component is otherwise considered Pb-Free (RoHS compatible) as defined above.

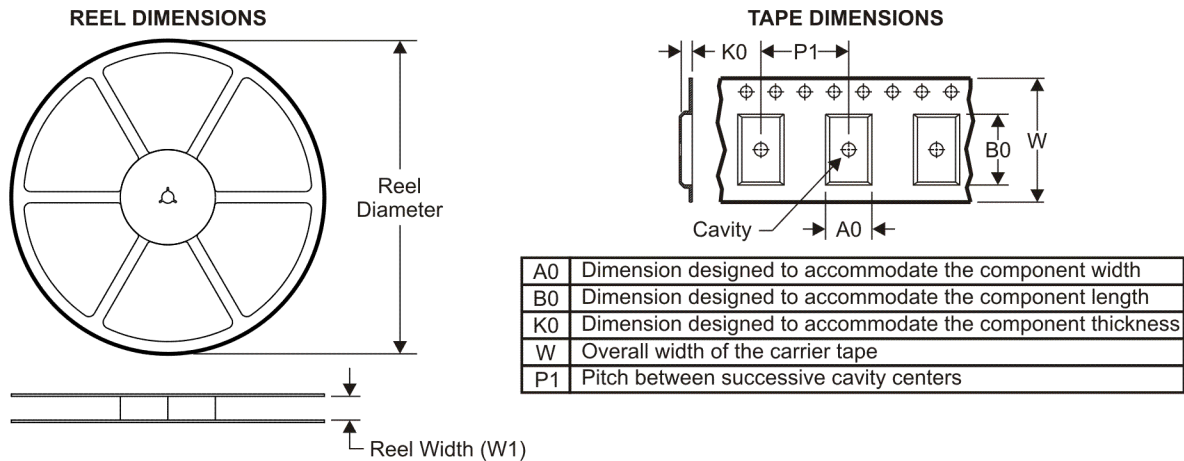
Green (RoHS & no Sb/Br): TI defines "Green" to mean Pb-Free (RoHS compatible), and free of Bromine (Br) and Antimony (Sb) based flame retardants (Br or Sb do not exceed 0.1% by weight in homogeneous material)

⁽³⁾ MSL, Peak Temp. -- The Moisture Sensitivity Level rating according to the JEDEC industry standard classifications, and peak solder temperature.

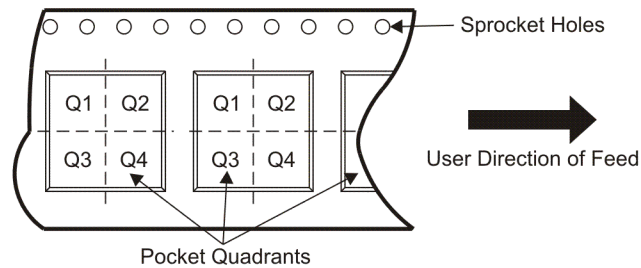
Important Information and Disclaimer: The information provided on this page represents TI's knowledge and belief as of the date that it is provided. TI bases its knowledge and belief on information provided by third parties, and makes no representation or warranty as to the accuracy of such information. Efforts are underway to better integrate information from third parties. TI has taken and continues to take reasonable steps to provide representative and accurate information but may not have conducted destructive testing or chemical analysis on incoming materials and chemicals. TI and TI suppliers consider certain information to be proprietary, and thus CAS numbers and other limited information may not be available for release.

In no event shall TI's liability arising out of such information exceed the total purchase price of the TI part(s) at issue in this document sold by TI to Customer on an annual basis.

TAPE AND REEL INFORMATION



QUADRANT ASSIGNMENTS FOR PIN 1 ORIENTATION IN TAPE



*All dimensions are nominal

Device	Package Type	Package Drawing	Pins	SPQ	Reel Diameter (mm)	Reel Width W1 (mm)	A0 (mm)	B0 (mm)	K0 (mm)	P1 (mm)	W (mm)	Pin1 Quadrant
TPS55332QPWPRQ1	HTSSOP	PWP	20	2000	330.0	16.4	6.95	7.1	1.6	8.0	16.0	Q1

TAPE AND REEL BOX DIMENSIONS



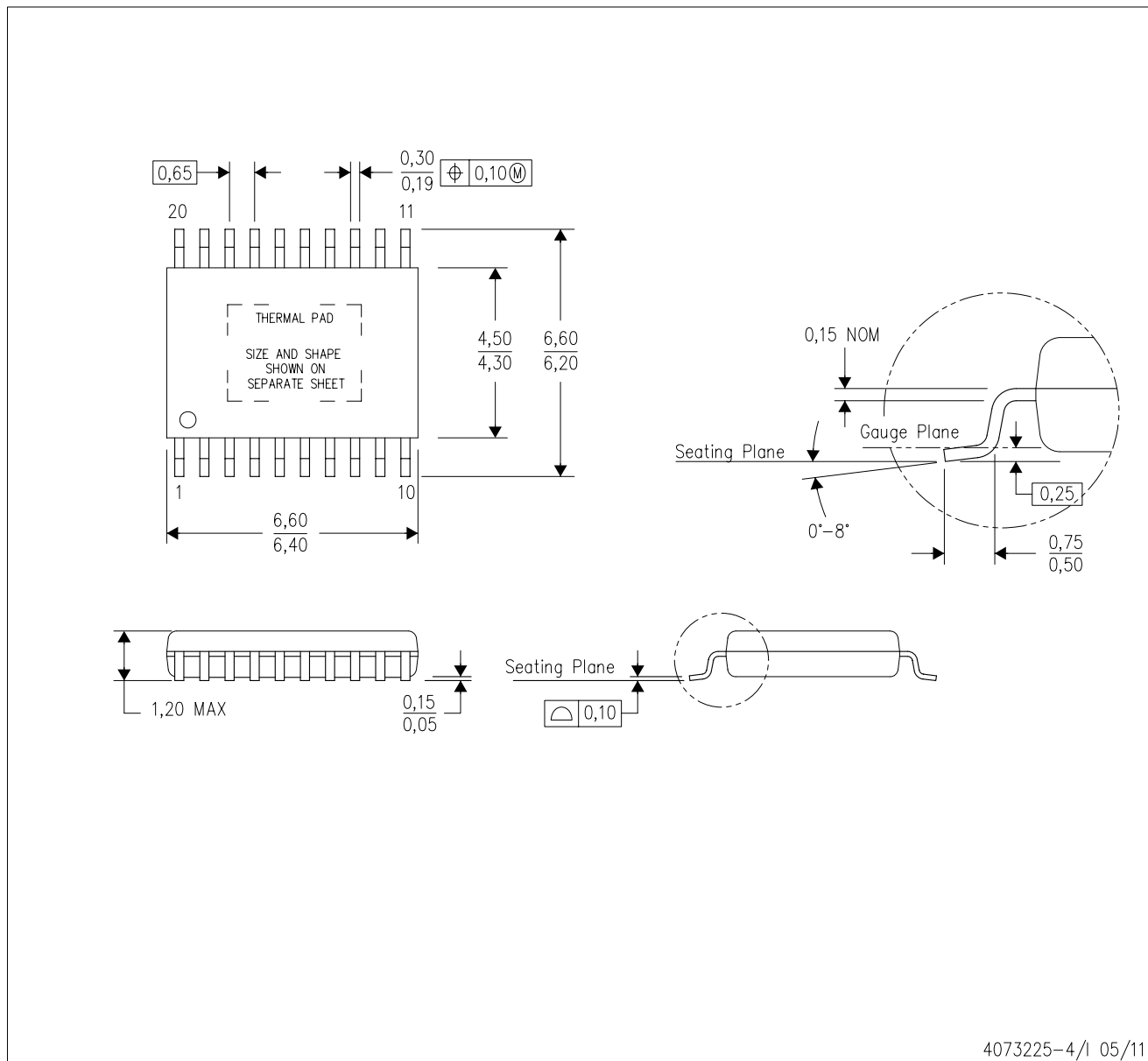
*All dimensions are nominal

Device	Package Type	Package Drawing	Pins	SPQ	Length (mm)	Width (mm)	Height (mm)
TPS55332QPWPRQ1	HTSSOP	PWP	20	2000	346.0	346.0	33.0

MECHANICAL DATA

PWP (R-PDSO-G20)

PowerPAD™ PLASTIC SMALL OUTLINE



4073225-4/1 05/11

- NOTES:
- All linear dimensions are in millimeters.
 - This drawing is subject to change without notice.
 - Body dimensions do not include mold flash or protrusions. Mold flash and protrusion shall not exceed 0.15 per side.
 - This package is designed to be soldered to a thermal pad on the board. Refer to Technical Brief, PowerPad Thermally Enhanced Package, Texas Instruments Literature No. SLMA002 for information regarding recommended board layout. This document is available at www.ti.com <<http://www.ti.com>>.
 - See the additional figure in the Product Data Sheet for details regarding the exposed thermal pad features and dimensions.
 - Falls within JEDEC MO-153

PowerPAD is a trademark of Texas Instruments.

IMPORTANT NOTICE

Texas Instruments Incorporated and its subsidiaries (TI) reserve the right to make corrections, modifications, enhancements, improvements, and other changes to its products and services at any time and to discontinue any product or service without notice. Customers should obtain the latest relevant information before placing orders and should verify that such information is current and complete. All products are sold subject to TI's terms and conditions of sale supplied at the time of order acknowledgment.

TI warrants performance of its hardware products to the specifications applicable at the time of sale in accordance with TI's standard warranty. Testing and other quality control techniques are used to the extent TI deems necessary to support this warranty. Except where mandated by government requirements, testing of all parameters of each product is not necessarily performed.

TI assumes no liability for applications assistance or customer product design. Customers are responsible for their products and applications using TI components. To minimize the risks associated with customer products and applications, customers should provide adequate design and operating safeguards.

TI does not warrant or represent that any license, either express or implied, is granted under any TI patent right, copyright, mask work right, or other TI intellectual property right relating to any combination, machine, or process in which TI products or services are used. Information published by TI regarding third-party products or services does not constitute a license from TI to use such products or services or a warranty or endorsement thereof. Use of such information may require a license from a third party under the patents or other intellectual property of the third party, or a license from TI under the patents or other intellectual property of TI.

Reproduction of TI information in TI data books or data sheets is permissible only if reproduction is without alteration and is accompanied by all associated warranties, conditions, limitations, and notices. Reproduction of this information with alteration is an unfair and deceptive business practice. TI is not responsible or liable for such altered documentation. Information of third parties may be subject to additional restrictions.

Resale of TI products or services with statements different from or beyond the parameters stated by TI for that product or service voids all express and any implied warranties for the associated TI product or service and is an unfair and deceptive business practice. TI is not responsible or liable for any such statements.

TI products are not authorized for use in safety-critical applications (such as life support) where a failure of the TI product would reasonably be expected to cause severe personal injury or death, unless officers of the parties have executed an agreement specifically governing such use. Buyers represent that they have all necessary expertise in the safety and regulatory ramifications of their applications, and acknowledge and agree that they are solely responsible for all legal, regulatory and safety-related requirements concerning their products and any use of TI products in such safety-critical applications, notwithstanding any applications-related information or support that may be provided by TI. Further, Buyers must fully indemnify TI and its representatives against any damages arising out of the use of TI products in such safety-critical applications.

TI products are neither designed nor intended for use in military/aerospace applications or environments unless the TI products are specifically designated by TI as military-grade or "enhanced plastic." Only products designated by TI as military-grade meet military specifications. Buyers acknowledge and agree that any such use of TI products which TI has not designated as military-grade is solely at the Buyer's risk, and that they are solely responsible for compliance with all legal and regulatory requirements in connection with such use.

TI products are neither designed nor intended for use in automotive applications or environments unless the specific TI products are designated by TI as compliant with ISO/TS 16949 requirements. Buyers acknowledge and agree that, if they use any non-designated products in automotive applications, TI will not be responsible for any failure to meet such requirements.

Following are URLs where you can obtain information on other Texas Instruments products and application solutions:

Products

Audio	www.ti.com/audio
Amplifiers	amplifier.ti.com
Data Converters	dataconverter.ti.com
DLP® Products	www.dlp.com
DSP	dsp.ti.com
Clocks and Timers	www.ti.com/clocks
Interface	interface.ti.com
Logic	logic.ti.com
Power Mgmt	power.ti.com
Microcontrollers	microcontroller.ti.com
RFID	www.ti-rfid.com
RF/IF and ZigBee® Solutions	www.ti.com/lprf

Applications

Communications and Telecom	www.ti.com/communications
Computers and Peripherals	www.ti.com/computers
Consumer Electronics	www.ti.com/consumer-apps
Energy and Lighting	www.ti.com/energy
Industrial	www.ti.com/industrial
Medical	www.ti.com/medical
Security	www.ti.com/security
Space, Avionics and Defense	www.ti.com/space-avionics-defense
Transportation and Automotive	www.ti.com/automotive
Video and Imaging	www.ti.com/video
Wireless	www.ti.com/wireless-apps

TI E2E Community Home Page

e2e.ti.com

Mailing Address: Texas Instruments, Post Office Box 655303, Dallas, Texas 75265
Copyright © 2011, Texas Instruments Incorporated