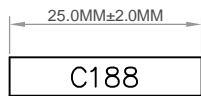
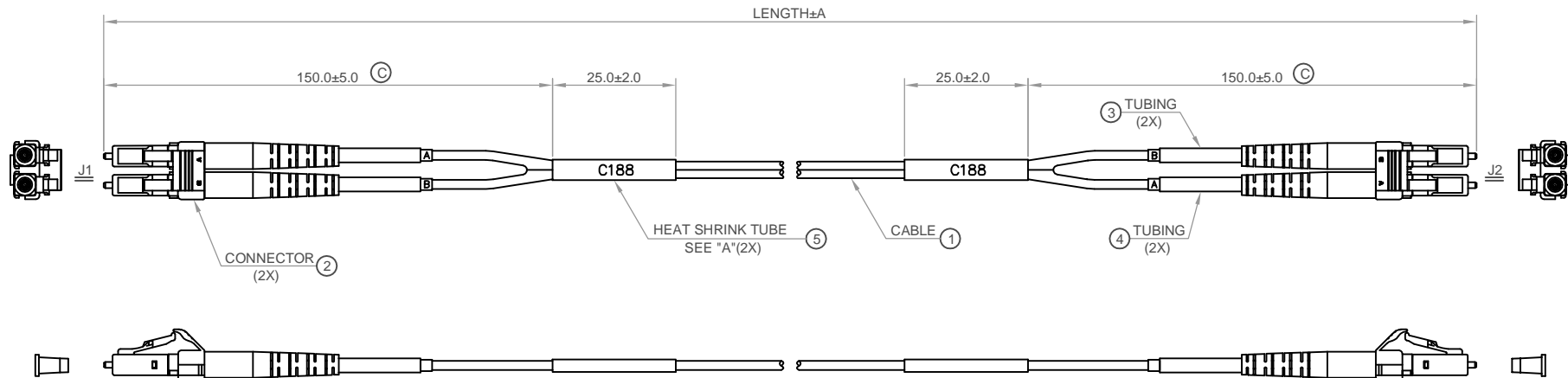


© 2012 CABLESYS, "GLOBAL MANUFACTURING SOLUTIONS, LLC". THIS DOCUMENT AND THE DESIGNS, SPECIFICATIONS AND INFORMATION CONTAINED HEREIN ARE THE PROPERTY OF CABLESYS. REPRODUCTION, MODIFICATION, ALTERATION, OR UNAUTHORIZED USE WITHOUT CABLESYS' APPROVAL IS STRICTLY PROHIBITED. THE CABLESYS TRADENAME AND LOGO ARE TRADEMARKS OF CABLESYS. ALL RIGHTS RESERVED.

REV	DESCRIPTION	Date	APPROVED
A	PRODUCTION RELEASE	05/01/07	
B	MODIFY SPEC.	05/11/09	
C	MODIFY LENGTH	09/30/09	
D	MODIFY LC BOOT COLOR	11/13/12	



DETAIL "A"

TOLERANCE

6-**-	0.15
3-5	0.10
2	0.05
0.6-1	0.04
0-0.5	0.03
LENGTH(M)	A(M)

GCFAZLLS**-M	**
GCFAZLLS01-M	1
CABLESYS P/N	LENGTH (M)

NOTE: ***: 01,02,03...

B	A
A	B
J1	J2
WIRE CONNECTION	

(B) NOTES:

1. NEW PRODUCTS SHALL BE REFERENCE TO BELLCORE GR-326 STANDARD.
2. INSERTION LOSS: <=0.2dB TYPICAL (1300nm) 0.3dB MAX.
3. RETURN LOSS: >=55dB(1310nm)

5	HEAT SHRINK TUBE	2PCS	COLOR=BLACK.
4	TUBING	2PCS	HEAT SHRINK SLEEVE, WHITE.
3	TUBING	2PCS	HEAT SHRINK SLEEVE, YELLOW.
(D) 2	CONNECTOR	2PCS	LC, DUPLEX, SINGLE-MODE, BLUE HOUSING & BOOTS
1	CABLE	1PC	OPTICAL FIBER, SINGLE-MODE, 9/125, DUPLEX, Ø2.0MM, TIGHT, YELLOW, PVC JACKET.
NO.	ITEM	Q'TY	DESCRIPTION

UNLESS OTHERWISE SPECIFIED
DIMENSION TOLERANCES ARE

DECIMALS	ANGULAR
.X +/- .050	+/- 0.5
.XX +/- .010	
.XXX +/- .005	

DO NOT SCALE DRAWING

CABLESYS

14700 E ALONDRA BLVD, LA MIRADA, CA 90638

WWW.CABLESYS.COM

FIBER JUMPER
SINGLEMODE DUPLEX LC TO LC

DESIGNER	A.C.	SIZE	A	FILE NO.	OFF SHELF CABLE\FIBER\GCFAZLLSXX-M	REV	D
DRAFTSMAN	H.W.	UNIT	MM	PAGE NO.	1/1	ITEM NO.	GCFAZLLSXX-M
APPROVED BY		SCALE	NTS	DATE	05/01/07	DWG NO.	FAZLLSXX-M

Approved by: _____ Title: _____ Date: _____