

# SN54AHCT123A, SN74AHCT123A DUAL RETRIGGERABLE MONOSTABLE MULTIVIBRATORS

SCLS420G – JUNE 1998 – REVISED APRIL 2003

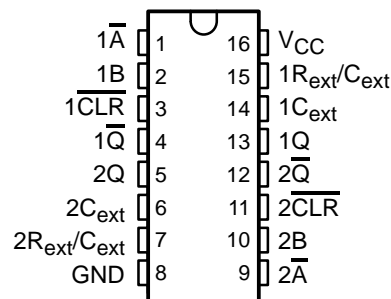
- Inputs Are TTL-Voltage Compatible
- Schmitt-Trigger Circuitry On  $\overline{A}$ , B, and  $\overline{CLR}$  Inputs for Slow Input Transition Rates
- Edge Triggered From Active-High or Active-Low Gated Logic Inputs
- Retriggerable for Very Long Output Pulses
- Overriding Clear Terminates Output Pulse
- Latch-Up Performance Exceeds 100 mA Per JESD 78, Class II
- ESD Protection Exceeds JESD 22
  - 2000-V Human-Body Model (A114-A)
  - 200-V Machine Model (A115-A)
  - 1000-V Charged-Device Model (C101)

## description/ordering information

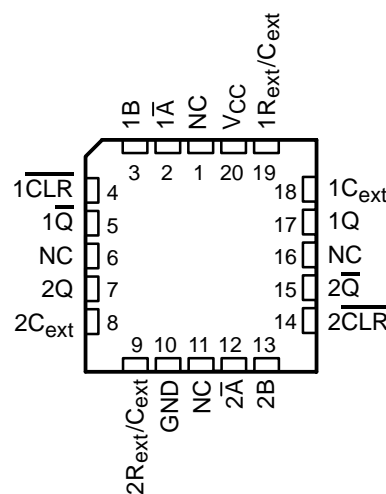
These edge-triggered multivibrators feature output pulse-duration control by three methods. In the first method, the  $\overline{A}$  input is low, and the B input goes high. In the second method, the B input is high, and the  $\overline{A}$  input goes low. In the third method, the  $\overline{A}$  input is low, the B input is high, and the clear ( $\overline{CLR}$ ) input goes high.

The output pulse duration is programmed by selecting external resistance and capacitance values. The external timing capacitor must be connected between  $C_{ext}$  and  $R_{ext}/C_{ext}$  (positive) and an external resistor connected between  $R_{ext}/C_{ext}$  and  $V_{CC}$ . To obtain variable pulse durations, connect an external variable resistance between  $R_{ext}/C_{ext}$  and  $V_{CC}$ . The output pulse duration also can be reduced by taking  $\overline{CLR}$  low.

SN54AHCT123A . . . J OR W PACKAGE  
SN74AHCT123A . . . D, DB, DGV, N, OR PW PACKAGE  
(TOP VIEW)



SN54AHCT123A . . . FK PACKAGE  
(TOP VIEW)



NC – No internal connection

## ORDERING INFORMATION

| $T_A$          | PACKAGE†      |                  | ORDERABLE PART NUMBER | TOP-SIDE MARKING |
|----------------|---------------|------------------|-----------------------|------------------|
| –40°C to 85°C  | PDIP – N      | Tube             | SN74AHCT123AN         | SN74AHCT123AN    |
|                | SOIC – D      | Tube             | SN74AHCT123AD         | AHCT123A         |
|                |               | Tape and reel    | SN74AHCT123ADR        |                  |
|                | SSOP – DB     | Tape and reel    | SN74AHCT123ADBR       | HB123A           |
|                | TSSOP – PW    | Tape and reel    | SN74AHCT123APWR       | HB123A           |
| TVSOP – DGV    | Tape and reel | SN74AHCT123ADGVR | HB123A                |                  |
| –55°C to 125°C | CDIP – J      | Tube             | SNJ54AHCT123AJ        | SNJ54AHCT123AJ   |
|                | CFP – W       | Tube             | SNJ54AHCT123AW        | SNJ54AHCT123AW   |
|                | LCCC – FK     | Tube             | SNJ54AHCT123AFK       | SNJ54AHCT123AFK  |

† Package drawings, standard packing quantities, thermal data, symbolization, and PCB design guidelines are available at [www.ti.com/sc/package](http://www.ti.com/sc/package).



Please be aware that an important notice concerning availability, standard warranty, and use in critical applications of Texas Instruments semiconductor products and disclaimers thereto appears at the end of this data sheet.

PRODUCTION DATA information is current as of publication date. Products conform to specifications per the terms of Texas Instruments standard warranty. Production processing does not necessarily include testing of all parameters.

 **TEXAS  
INSTRUMENTS**

POST OFFICE BOX 655303 • DALLAS, TEXAS 75265

Copyright © 2003, Texas Instruments Incorporated  
On products compliant to MIL-PRF-38535, all parameters are tested unless otherwise noted. On all other products, production processing does not necessarily include testing of all parameters.

# SN54AHCT123A, SN74AHCT123A DUAL RETRIGGERABLE MONOSTABLE MULTIVIBRATORS

SCLS420G – JUNE 1998 – REVISED APRIL 2003

## description/ordering information(continued)

Pulse triggering occurs at a particular voltage level and is not directly related to the transition time of the input pulse. The  $\overline{A}$ , B, and  $\overline{CLR}$  inputs have Schmitt triggers with sufficient hysteresis to handle slow input transition rates with jitter-free triggering at the outputs.

Once triggered, the basic pulse duration can be extended by retriggering the gated low-level-active ( $\overline{A}$ ) or high-level-active (B) input. Pulse duration can be reduced by taking  $\overline{CLR}$  low.  $\overline{CLR}$  input can be used to override  $\overline{A}$  or B inputs. The input/output timing diagram illustrates pulse control by retriggering the inputs and early clearing.

The variance in output pulse duration from device to device typically is less than  $\pm 0.5\%$  for given external timing components. An example of this distribution for the 'AHCT123A is shown in Figure 10. Variations in output pulse duration versus supply voltage and temperature are shown in Figure 6.

During power up, Q outputs are in the low state, and  $\overline{Q}$  outputs are in the high state. The outputs are glitch free, without applying a reset pulse.

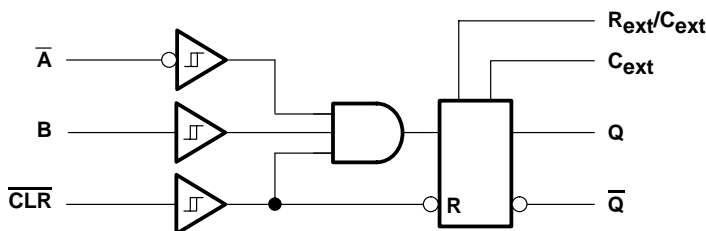
For additional application information on multivibrators, see the application report, *Designing With the SN74AHC123A and SN74AHCT123A*, literature number SCLA014.

**FUNCTION TABLE**  
(each multivibrator)

| INPUTS |                |   | OUTPUTS        |                |
|--------|----------------|---|----------------|----------------|
| CLR    | $\overline{A}$ | B | Q              | $\overline{Q}$ |
| L      | X              | X | L              | H              |
| X      | H              | X | L <sup>†</sup> | H <sup>†</sup> |
| X      | X              | L | L <sup>†</sup> | H <sup>†</sup> |
| H      | L              | ↑ |                |                |
| H      | ↓              | H |                |                |
| ↑      | L              | H |                |                |

† These outputs are based on the assumption that the indicated steady-state conditions at the  $\overline{A}$  and B inputs have been set up long enough to complete any pulse started before the setup.

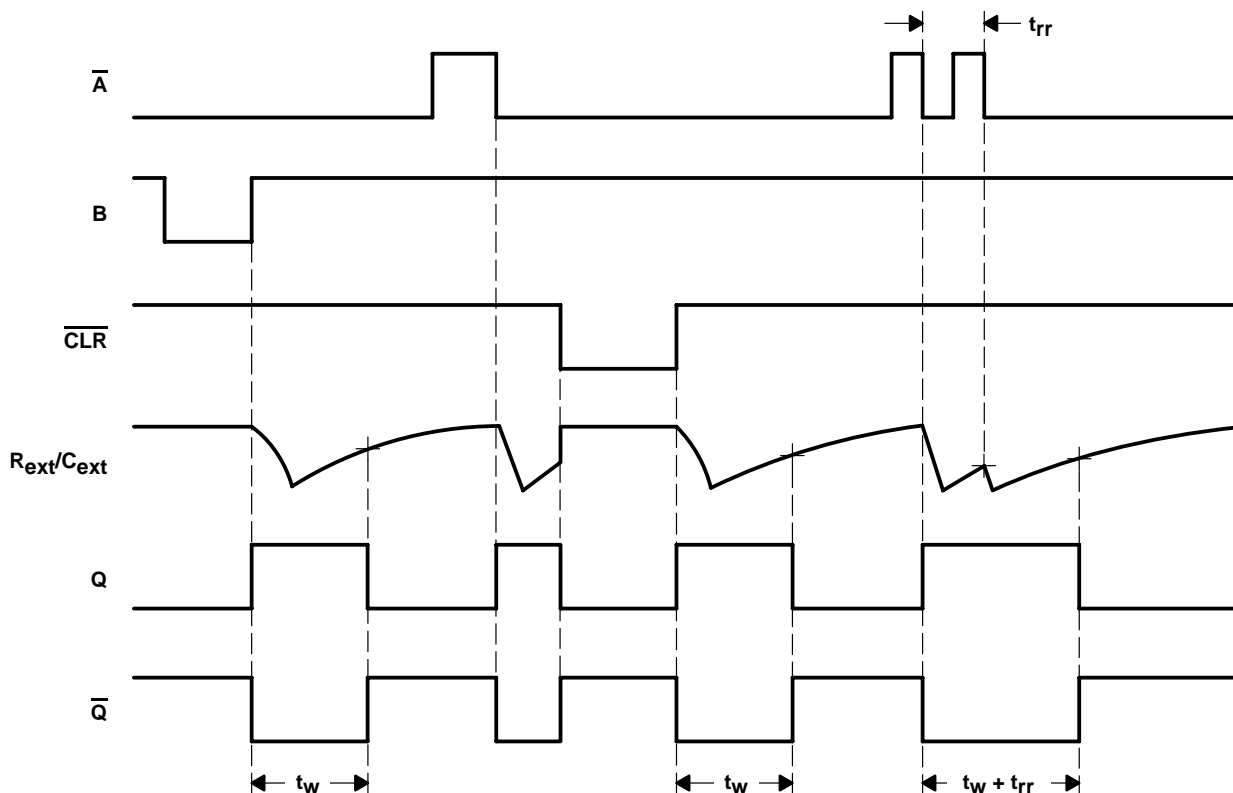
## logic diagram, each multivibrator (positive logic)



# SN54AHCT123A, SN74AHCT123A DUAL RETRIGGERABLE MONOSTABLE MULTIVIBRATORS

SCLS420G – JUNE 1998 – REVISED APRIL 2003

## input/output timing diagram



## absolute maximum ratings over operating free-air temperature (unless otherwise noted)†

|  |                            |
|--|----------------------------|
| Supply voltage range, $V_{CC}$ (see Note 1)                    | –0.5 V to 7 V              |
| Input voltage range, $V_I$ (see Note 2)                        | –0.5 V to 7 V              |
| Output voltage range, $V_O$ (see Note 1)                       | –0.5 V to $V_{CC} + 0.5$ V |
| Input clamp current, $I_{IK}$ ( $V_I < 0$ )                    | –20 mA                     |
| Output clamp current, $I_{OK}$ ( $V_O < 0$ or $V_O > V_{CC}$ ) | $\pm 20$ mA                |
| Continuous output current, $I_O$ ( $V_O = 0$ to $V_{CC}$ )     | $\pm 25$ mA                |
| Continuous current through $V_{CC}$ or GND                     | $\pm 50$ mA                |
| Package thermal impedance, $\theta_{JA}$ (see Note 3):         |                            |
| D package  | 73°C/W                     |
| DB package   | 82°C/W                     |
| DGV package  | 120°C/W                    |
| N package  | 67°C/W                     |
| PW package   | 108°C/W                    |
| Storage temperature range, $T_{Stg}$                           | –65°C to 150°C             |

† Stresses beyond those listed under “absolute maximum ratings” may cause permanent damage to the device. These are stress ratings only, and functional operation of the device at these or any other conditions beyond those indicated under “recommended operating conditions” is not implied. Exposure to absolute-maximum-rated conditions for extended periods may affect device reliability.

- NOTES:
1. Voltage values are with respect to the network ground terminal.
  2. The input and output voltage ratings may be exceeded if the input and output current ratings are observed.
  3. The package thermal impedance is calculated in accordance with JESD 51-7.

# SN54AHCT123A, SN74AHCT123A DUAL RETRIGGERABLE MONOSTABLE MULTIVIBRATORS

SCLS420G – JUNE 1998 – REVISED APRIL 2003

## recommended operating conditions (see Note 4)

|                          |                                | SN54AHCT123A |          | SN74AHCT123A |          | UNIT        |
|--------------------------|--------------------------------|--------------|----------|--------------|----------|-------------|
|                          |                                | MIN          | MAX      | MIN          | MAX      |             |
| $V_{CC}$                 | Supply voltage                 | 4.5          | 5.5      | 4.5          | 5.5      | V           |
| $V_{IH}$                 | High-level input voltage       | 2            |          | 2            |          | V           |
| $V_{IL}$                 | Low-level input voltage        |              | 0.8      |              | 0.8      | V           |
| $V_I$                    | Input voltage                  | 0            | 5.5      | 0            | 5.5      | V           |
| $V_O$                    | Output voltage                 | 0            | $V_{CC}$ | 0            | $V_{CC}$ | V           |
| $I_{OH}$                 | High-level output current      |              | -8       |              | -8       | mA          |
| $I_{OL}$                 | Low-level output current       |              | 8        |              | 8        | mA          |
| $R_{ext}$                | External timing resistance     | 1k           |          | 1k           |          | $\Omega$    |
| $\Delta t/\Delta V_{CC}$ | Power-up ramp rate             | 1            |          | 1            |          | ms/V        |
| $T_A$                    | Operating free-air temperature | -55          | 125      | -40          | 85       | $^{\circ}C$ |

NOTE 4: Unused  $R_{ext}/C_{ext}$  terminals should be left unconnected. All remaining unused inputs of the device must be held at  $V_{CC}$  or GND to ensure proper device operation. Refer to the TI application report, *Implications of Slow or Floating CMOS Inputs*, literature number SCBA004.

## electrical characteristics over recommended operating free-air temperature range (unless otherwise noted)

| PARAMETER                  | TEST CONDITIONS   | $V_{CC}$  | $T_A = 25^{\circ}C$ |     |            | SN54AHCT123A |           | SN74AHCT123A |         | UNIT |
|----------------------------|---|---|---------------------|-----|------------|--------------|-----------|--------------|---------|------|
|                            |   |   | MIN                 | TYP | MAX        | MIN          | MAX       | MIN          | MAX     |      |
| $V_{OH}$                   | $I_{OH} = -50 \mu A$                                    | 4.5 V   | 4.4                 | 4.5 |            | 4.4          |           | 4.4          | V       |      |
|                            | $I_{OH} = -8 \text{ mA}$                                |   | 3.94                |     |            | 3.8          |           | 3.8          |         |      |
| $V_{OL}$                   | $I_{OL} = 50 \mu A$                                     | 4.5 V   |                     |     | 0.1        |              |           | 0.1          | V       |      |
|                            | $I_{OL} = 8 \text{ mA}$                                 |   |                     |     | 0.36       |              | 0.5       | 0.44         |         |      |
| $I_I$                      | $R_{ext}/C_{ext}^{\dagger}$<br>$\bar{A}, B,$<br>and CLR | $V_I = V_{CC}$ or GND                                 |                     |     | $\pm 0.25$ |              |           | $\pm 2.5$    | $\mu A$ |      |
|                            |   | $V_I = V_{CC}$ or GND                                 | 0 V to 5.5 V        |     | $\pm 0.1$  |              | $\pm 1^*$ | $\pm 1$      |         |      |
| $I_{CC}$                   | Quiescent   | $V_I = V_{CC}$ or GND, $I_O = 0$                      |                     |     | 4          |              | 40        | 40           | $\mu A$ |      |
| $I_{CC}$                   | Active state (per circuit)                              | $V_I = V_{CC}$ or GND, $R_{ext}/C_{ext} = 0.5 V_{CC}$ |                     | 560 | 750        |              | 975       | 975          | $\mu A$ |      |
| $\Delta I_{CC}^{\ddagger}$ |   | One input at 3.4 V, Other inputs at $V_{CC}$ or GND   |                     |     | 1.35       |              | 1.5       | 1.5          | mA      |      |
| $C_i$                      |   | $V_I = V_{CC}$ or GND                                 |                     | 1.9 | 10         |              |           | 10           | pF      |      |

\* On products compliant to MIL-PRF-38535, this parameter is not production tested at  $V_{CC} = 0 \text{ V}$ .

$\dagger$  This test is performed with the terminal in the off-state condition.

$\ddagger$  This is the increase in supply current for each input at one of the specified TTL voltage levels rather than 0 V or  $V_{CC}$ .

## timing requirements over recommended operating free-air temperature range, $V_{CC} = 5 \text{ V} \pm 0.5 \text{ V}$ (unless otherwise noted) (see Figure 1)

|          | TEST CONDITIONS                         | $T_A = 25^{\circ}C$                                       |     |     | SN54AHCT123A |     | SN74AHCT123A |     | UNIT          |
|----------|---|---|-----|-----|--------------|-----|--------------|-----|---------------|
|          |   | MIN   | TYP | MAX | MIN          | MAX | MIN          | MAX |               |
| $t_w$    | Pulse duration<br>CLR<br>A or B trigger |   | 5   |     |              | 5   |              | 5   | ns            |
|          |   |   | 5   |     |              | 5   |              | 5   |               |
| $t_{rr}$ | Pulse retrigger time                    | $R_{ext} = 1 \text{ k}\Omega, C_{ext} = 100 \text{ pF}$   | §   | 60  |              | §   |              | §   | ns            |
|          |   | $R_{ext} = 1 \text{ k}\Omega, C_{ext} = 0.01 \mu\text{F}$ | §   | 1.5 |              | §   |              | §   | $\mu\text{s}$ |

§ See retriggering data in the *application information* section.



# SN54AHCT123A, SN74AHCT123A DUAL RETRIGGERABLE MONOSTABLE MULTIVIBRATORS

SCLS420G – JUNE 1998 – REVISED APRIL 2003

**switching characteristics over recommended operating free-air temperature range,  
V<sub>CC</sub> = 5 V ± 0.5 V (unless otherwise noted) (see Figure 1)**

| PARAMETER         | FROM (INPUT) | TO (OUTPUT) | TEST CONDITIONS  | T <sub>A</sub> = 25°C |     |     | SN54AHCT123A |     | SN74AHCT123A |     | UNIT |
|-------------------|--------------|-------------|--|-----------------------|-----|-----|--------------|-----|--------------|-----|------|
|                   |              |             |  | MIN                   | TYP | MAX | MIN          | MAX | MIN          | MAX |      |
| t <sub>PLH</sub>  | A̅ or B      | Q or Q̅     | C <sub>L</sub> = 15 pF   | 5.3*                  | 10* |     | 1*           | 13* | 1            | 11  | ns   |
| t <sub>PHL</sub>  |              |             |  | 5.3*                  | 10* |     | 1*           | 13* | 1            | 11  |      |
| t <sub>PLH</sub>  | CLR̅         | Q or Q̅     | C <sub>L</sub> = 15 pF   | 7.7*                  | 12* |     | 1*           | 15* | 1            | 13  | ns   |
| t <sub>PHL</sub>  |              |             |  | 7.7*                  | 12* |     | 1*           | 15* | 1            | 13  |      |
| t <sub>PLH</sub>  | CLR̅ trigger | Q or Q̅     | C <sub>L</sub> = 15 pF   | 8*                    | 13* |     | 1*           | 16* | 1            | 14  | ns   |
| t <sub>PHL</sub>  |              |             |  | 8*                    | 13* |     | 1*           | 16* | 1            | 14  |      |
| t <sub>PLH</sub>  | A̅ or B      | Q or Q̅     | C <sub>L</sub> = 50 pF   | 6.8                   | 11  |     | 1            | 14  | 1            | 12  | ns   |
| t <sub>PHL</sub>  |              |             |  | 6.8                   | 11  |     | 1            | 14  | 1            | 12  |      |
| t <sub>PLH</sub>  | CLR̅         | Q or Q̅     | C <sub>L</sub> = 50 pF   | 9.2                   | 13  |     | 1            | 16  | 1            | 14  | ns   |
| t <sub>PHL</sub>  |              |             |  | 9.2                   | 13  |     | 1            | 16  | 1            | 14  |      |
| t <sub>PLH</sub>  | CLR̅ trigger | Q or Q̅     | C <sub>L</sub> = 50 pF   | 9.5                   | 14  |     | 1            | 17  | 1            | 15  | ns   |
| t <sub>PHL</sub>  |              |             |  | 9.5                   | 14  |     | 1            | 17  | 1            | 15  |      |
| t <sub>w</sub> †  |              | Q or Q̅     | C <sub>L</sub> = 50 pF,<br>C <sub>ext</sub> = 28 pF,<br>R <sub>ext</sub> = 2 kΩ    | 133                   | 200 |     | 240          |     | 240          | ns  |      |
|                   |              |             | C <sub>L</sub> = 50 pF,<br>C <sub>ext</sub> = 0.01 μF,<br>R <sub>ext</sub> = 10 kΩ | 90                    | 100 | 110 | 90           | 110 | 90           | 110 | μs   |
|                   |              |             | C <sub>L</sub> = 50 pF,<br>C <sub>ext</sub> = 0.1 μF,<br>R <sub>ext</sub> = 10 kΩ  | 0.9                   | 1   | 1.1 | 0.9          | 1.1 | 0.9          | 1.1 | ms   |
| Δt <sub>w</sub> ‡ |              |             |  | ±1                    |     |     |              |     |              | %   |      |

\* On products compliant to MIL-PRF-38535, this parameter is not production tested.

† t<sub>w</sub> = Pulse duration at Q and Q̅ outputs

‡ Δt<sub>w</sub> = Output pulse-duration variation (Q and Q̅) between circuits in same package

## operating characteristics, V<sub>CC</sub> = 5 V, T<sub>A</sub> = 25°C

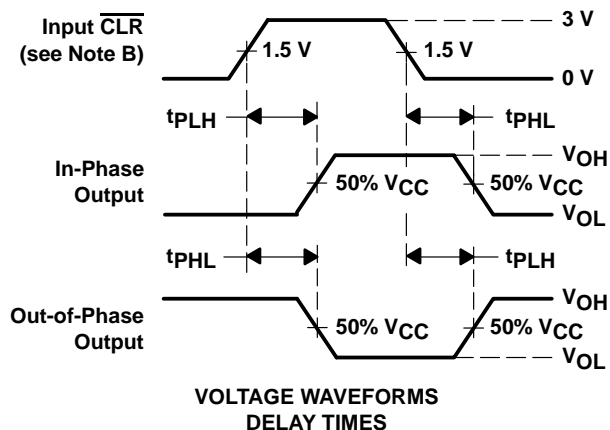
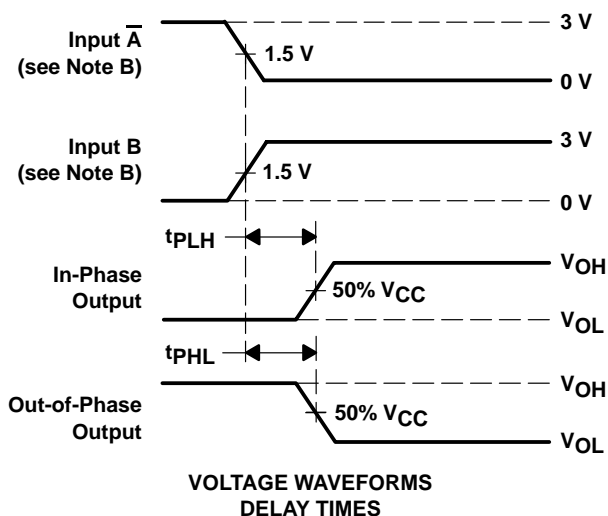
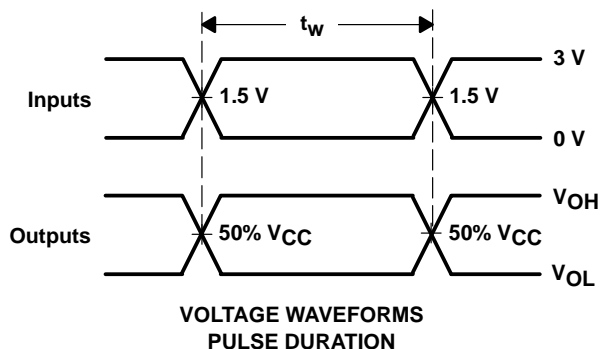
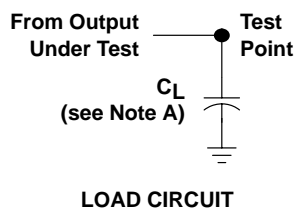
| PARAMETER                                     | TEST CONDITIONS | TYP | UNIT |
|---|-----------------|-----|------|
| C <sub>pd</sub> Power dissipation capacitance | No load         | 29  | pF   |



# SN54AHCT123A, SN74AHCT123A DUAL RETRIGGERABLE MONOSTABLE MULTIVIBRATORS

SCLS420G – JUNE 1998 – REVISED APRIL 2003

## PARAMETER MEASUREMENT INFORMATION



- NOTES: A.  $C_L$  includes probe and jig capacitance.  
 B. All input pulses are supplied by generators having the following characteristics:  $Z_O = 50 \Omega$ ,  $t_r = 3 \text{ ns}$ ,  $t_f = 3 \text{ ns}$ .  
 C. The outputs are measured one at a time with one input transition per measurement.

Figure 1. Load Circuit and Voltage Waveforms

## APPLICATION INFORMATION

### caution in use

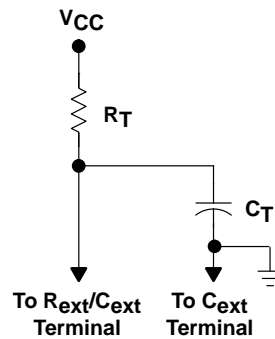
To prevent malfunctions due to noise, connect a high-frequency capacitor between  $V_{CC}$  and GND, and keep the wiring between the external components and  $C_{ext}$  and  $R_{ext}/C_{ext}$  terminals as short as possible.

### power-down considerations

Large values of  $C_{ext}$  may cause problems when powering down the 'AHCT123A devices because of the amount of energy stored in the capacitor. When a system containing this device is powered down, the capacitor may discharge from  $V_{CC}$  through the protection diodes at pin 2 or pin 14. Current through the input protection diodes must be limited to 30 mA; therefore, the turn-off time of the  $V_{CC}$  power supply must not be faster than  $t = V_{CC} \times C_{ext} / 30 \text{ mA}$ . For example, if  $V_{CC} = 5 \text{ V}$  and  $C_{ext} = 15 \text{ pF}$ , the  $V_{CC}$  supply must turn off no faster than  $t = (5 \text{ V}) \times (15 \text{ pF}) / 30 \text{ mA} = 2.5 \text{ ns}$ . Usually, this is not a problem because power supplies are heavily filtered and cannot discharge at this rate. When a more rapid decrease of  $V_{CC}$  to zero occurs, the 'AHCT123A devices may sustain damage. To avoid this possibility, use external clamping diodes.

### output pulse duration

The output pulse duration,  $t_w$ , is determined primarily by the values of the external capacitance ( $C_T$ ) and timing resistance ( $R_T$ ). The timing components are connected as shown in Figure 2.



**Figure 2. Timing-Component Connections**

The pulse duration is given by:

$$t_w = K \times R_T \times C_T \tag{1}$$

if  $C_T$  is  $\geq 1000 \text{ pF}$ ,  $K = 1.0$  or  
 if  $C_T$  is  $< 1000 \text{ pF}$ ,  $K$  can be determined from Figure 5

where:

- $t_w$  = pulse duration in ns
- $R_T$  = external timing resistance in  $k\Omega$
- $C_T$  = external capacitance in pF
- $K$  = multiplier factor

Equation 1 and Figure 3 can be used to determine values for pulse duration, external resistance, and external capacitance.

# SN54AHCT123A, SN74AHCT123A DUAL RETRIGGERABLE MONOSTABLE MULTIVIBRATORS

SCLS420G – JUNE 1998 – REVISED APRIL 2003

## APPLICATION INFORMATION

### retriggering data

The minimum input retriggering time ( $t_{MIR}$ ) is the minimum time required after the initial signal before retriggering the input. After  $t_{MIR}$ , the device retriggers the output. Experimentally, it also can be shown that to retrigger the output pulse, the two adjacent input signals should be  $t_{MIR}$  apart, where  $t_{MIR} = 0.30 \times t_w$ . The retrigger pulse duration is calculated as shown in Figure 3.

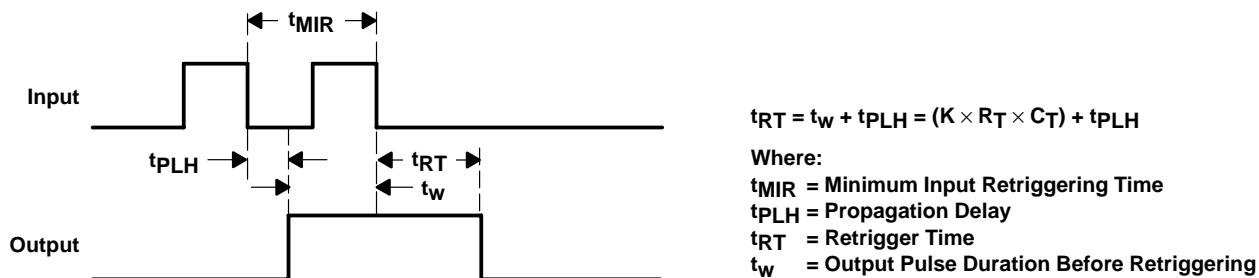
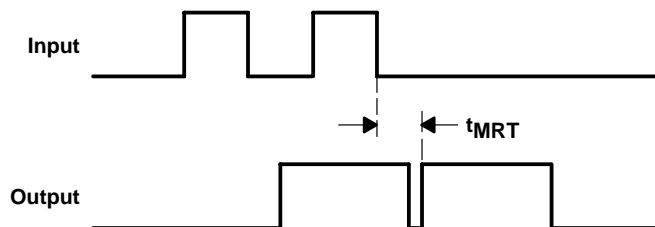


Figure 3. Retrigger Pulse Duration

The minimum value from the end of the input pulse to the beginning of the retriggered output should be approximately 15 ns to ensure a retriggered output (see Figure 4).



$t_{MRT}$  = Minimum Time Between the End of the Second Input Pulse and the Beginning of the Retriggered Output  
 $t_{MRT} = 15 \text{ ns}$

Figure 4. Input/Output Requirements

APPLICATION INFORMATION†

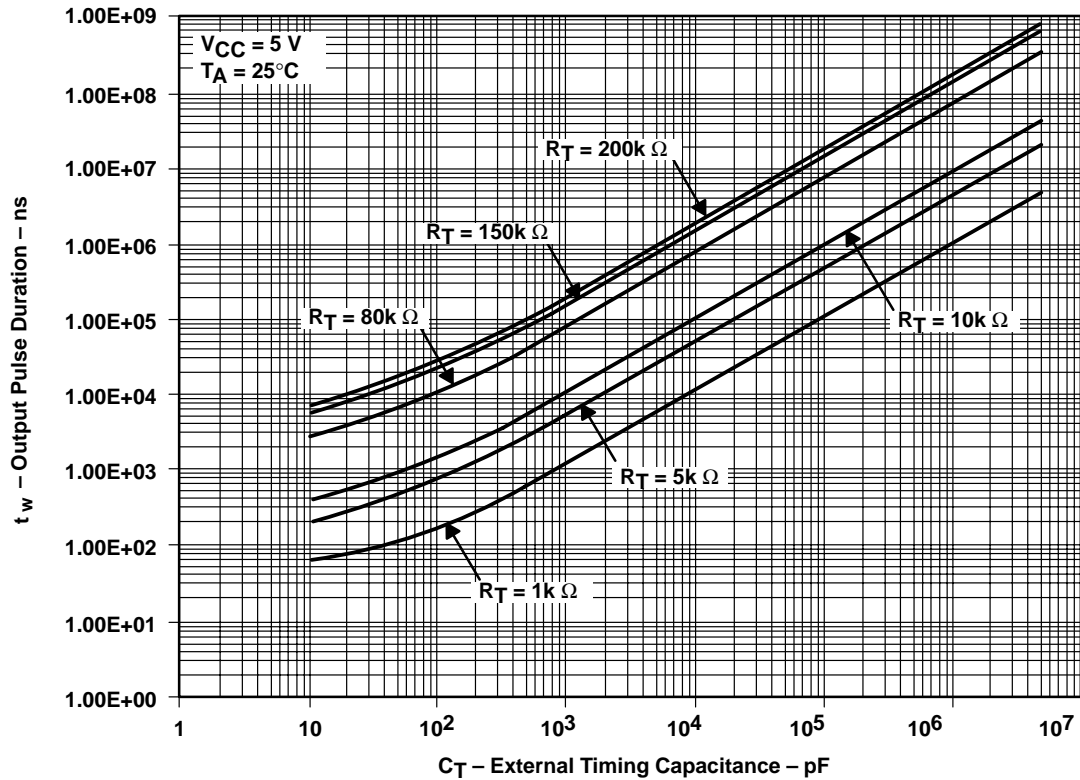


Figure 5. Output Pulse Duration vs External Timing Capacitance

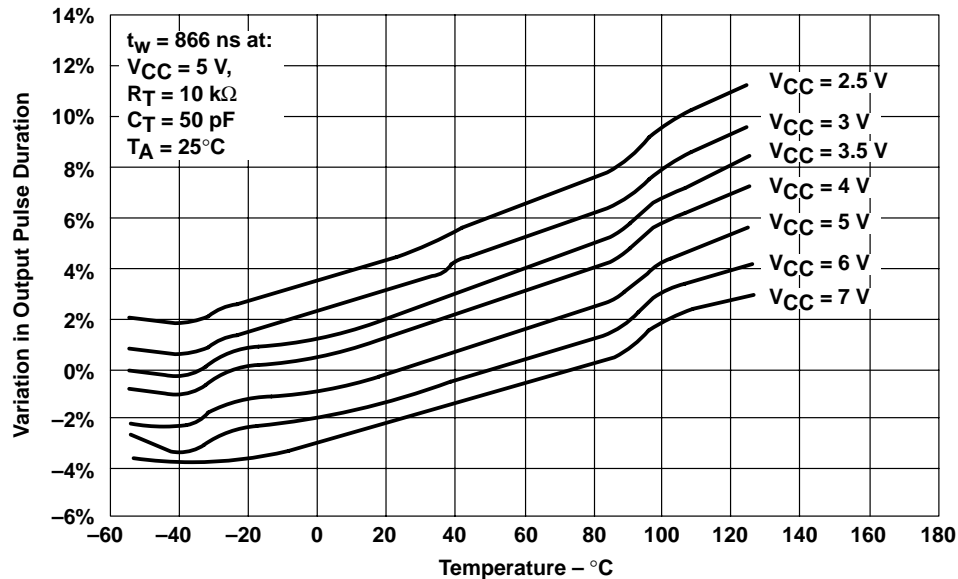


Figure 6. Variations in Output Pulse Duration vs Temperature

† Operation of the device at these or any other conditions beyond those indicated under "recommended operating conditions" is not implied.

# SN54AHCT123A, SN74AHCT123A DUAL RETRIGGERABLE MONOSTABLE MULTIVIBRATORS

SCLS420G – JUNE 1998 – REVISED APRIL 2003

## APPLICATION INFORMATION†

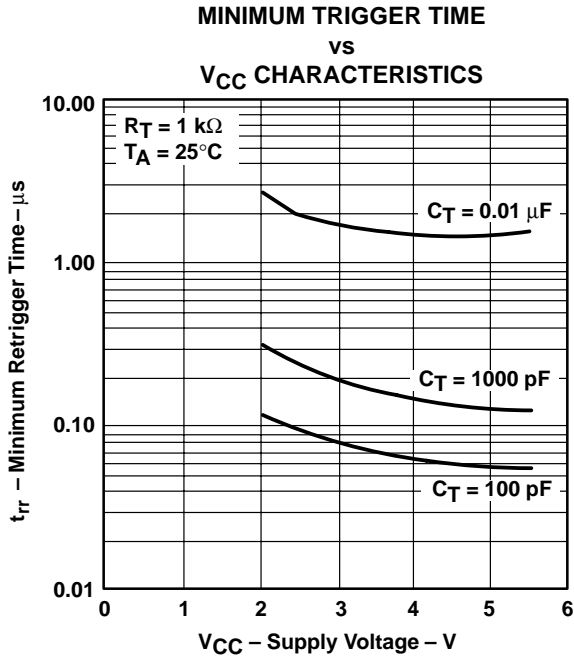


Figure 7

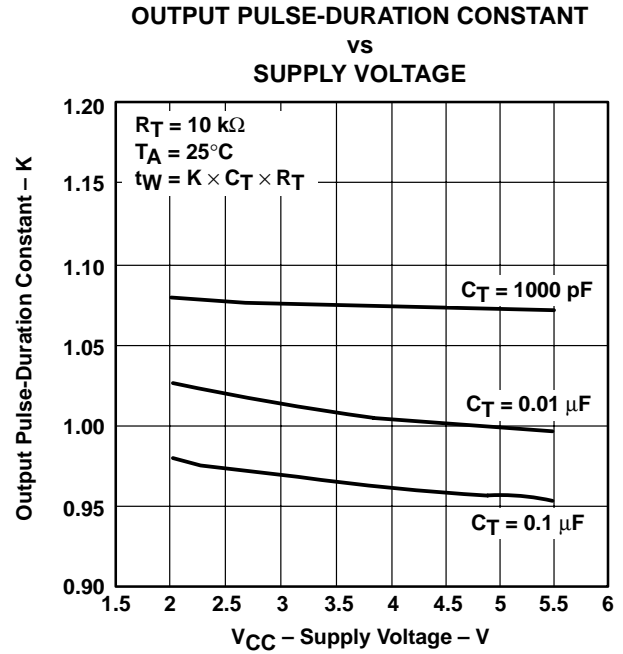


Figure 8

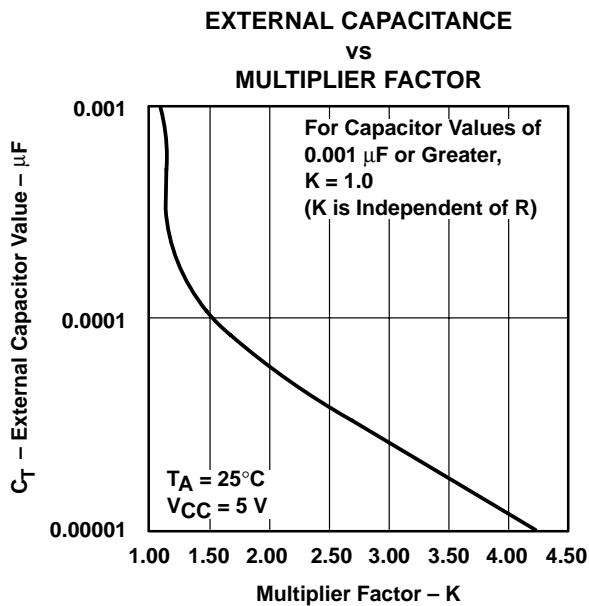


Figure 9

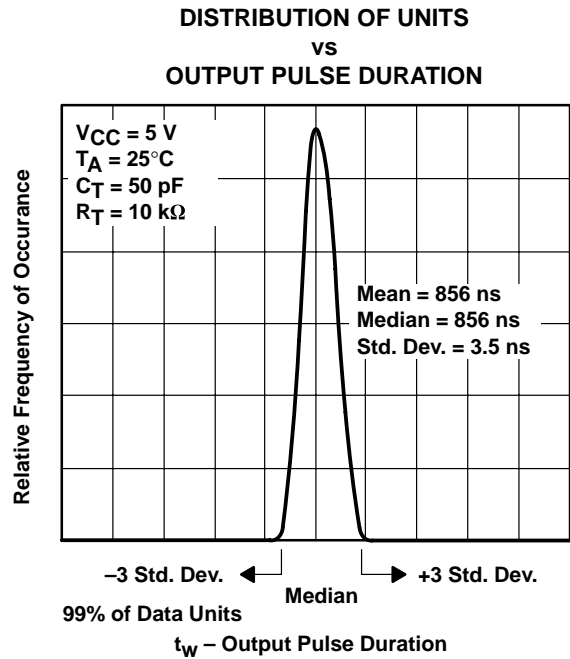


Figure 10

† Operation of the device at these or any other conditions beyond those indicated under "recommended operating conditions" is not implied.

J (R-GDIP-T\*\*)

14 LEADS SHOWN

CERAMIC DUAL IN-LINE PACKAGE



| DIM \ PINS ** | 14                     | 16                     | 18                     | 20                     |
|---------------|------------------------|------------------------|------------------------|------------------------|
| A             | 0.300<br>(7,62)<br>BSC | 0.300<br>(7,62)<br>BSC | 0.300<br>(7,62)<br>BSC | 0.300<br>(7,62)<br>BSC |
| B MAX         | 0.785<br>(19,94)       | .840<br>(21,34)        | 0.960<br>(24,38)       | 1.060<br>(26,92)       |
| B MIN         | —                      | —                      | —                      | —                      |
| C MAX         | 0.300<br>(7,62)        | 0.300<br>(7,62)        | 0.310<br>(7,87)        | 0.300<br>(7,62)        |
| C MIN         | 0.245<br>(6,22)        | 0.245<br>(6,22)        | 0.220<br>(5,59)        | 0.245<br>(6,22)        |

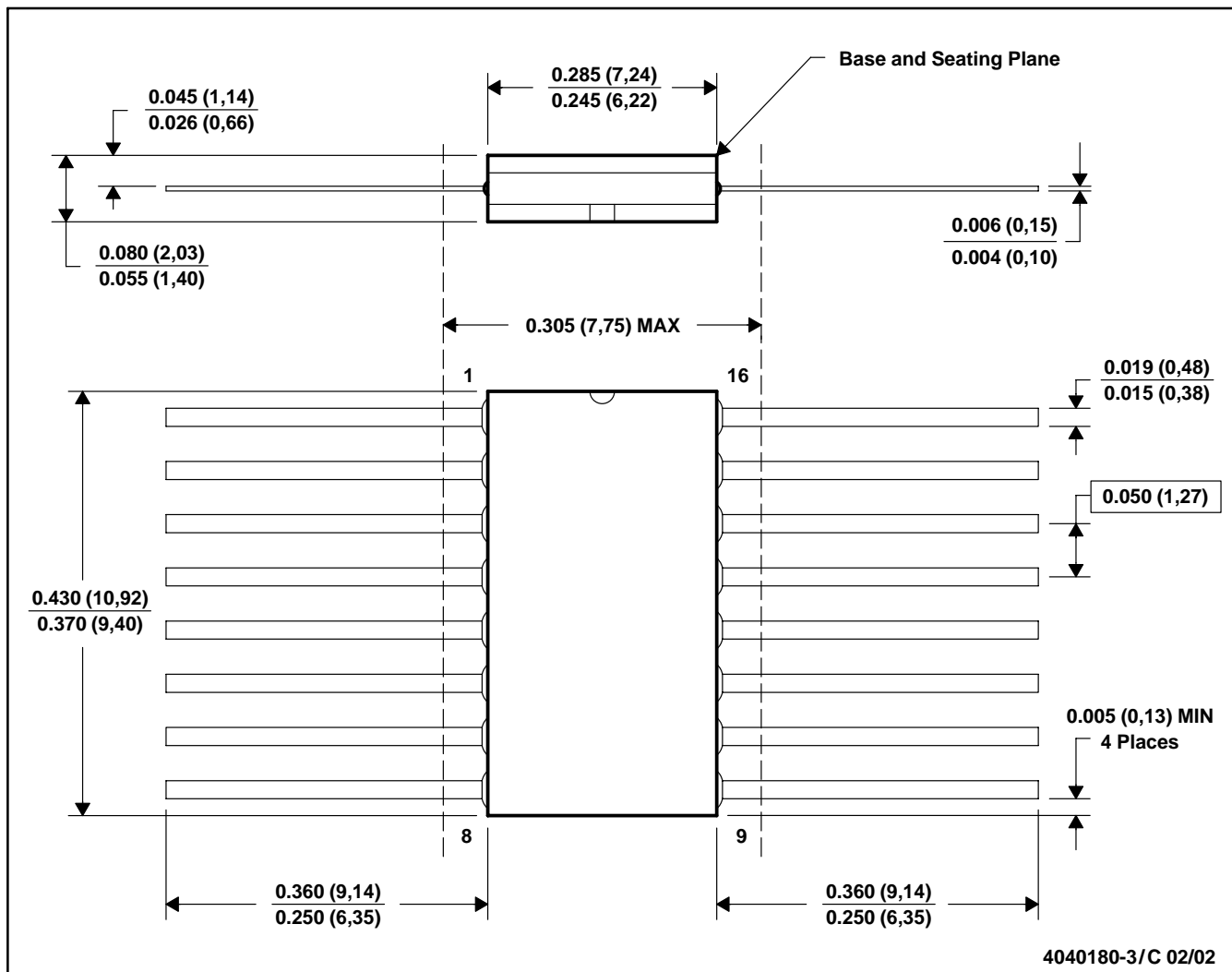


4040083/F 03/03

- NOTES:
- A. All linear dimensions are in inches (millimeters).
  - B. This drawing is subject to change without notice.
  - C. This package is hermetically sealed with a ceramic lid using glass frit.
  - D. Index point is provided on cap for terminal identification only on press ceramic glass frit seal only.
  - E. Falls within MIL STD 1835 GDIP1-T14, GDIP1-T16, GDIP1-T18 and GDIP1-T20.

W (R-GDFP-F16)

CERAMIC DUAL FLATPACK



4040180-3/C 02/02

- NOTES: A. All linear dimensions are in inches (millimeters).  
 B. This drawing is subject to change without notice.  
 C. This package can be hermetically sealed with a ceramic lid using glass frit.  
 D. Index point is provided on cap for terminal identification only.  
 E. Falls within MIL STD 1835 GDFP-1F16 and JEDEC MO-092AC

FK (S-CQCC-N\*\*)

LEADLESS CERAMIC CHIP CARRIER

28 TERMINAL SHOWN



- NOTES:
- A. All linear dimensions are in inches (millimeters).
  - B. This drawing is subject to change without notice.
  - C. This package can be hermetically sealed with a metal lid.
  - D. The terminals are gold plated.
  - E. Falls within JEDEC MS-004

N (R-PDIP-T\*\*)

PLASTIC DUAL-IN-LINE PACKAGE

16 PINS SHOWN



4040049/E 12/2002

- NOTES:
- A. All linear dimensions are in inches (millimeters).
  - B. This drawing is subject to change without notice.
  - (C) Falls within JEDEC MS-001, except 18 and 20 pin minimum body length (Dim A).
  - (D) The 20 pin end lead shoulder width is a vendor option, either half or full width.

DGV (R-PDSO-G\*\*)

PLASTIC SMALL-OUTLINE

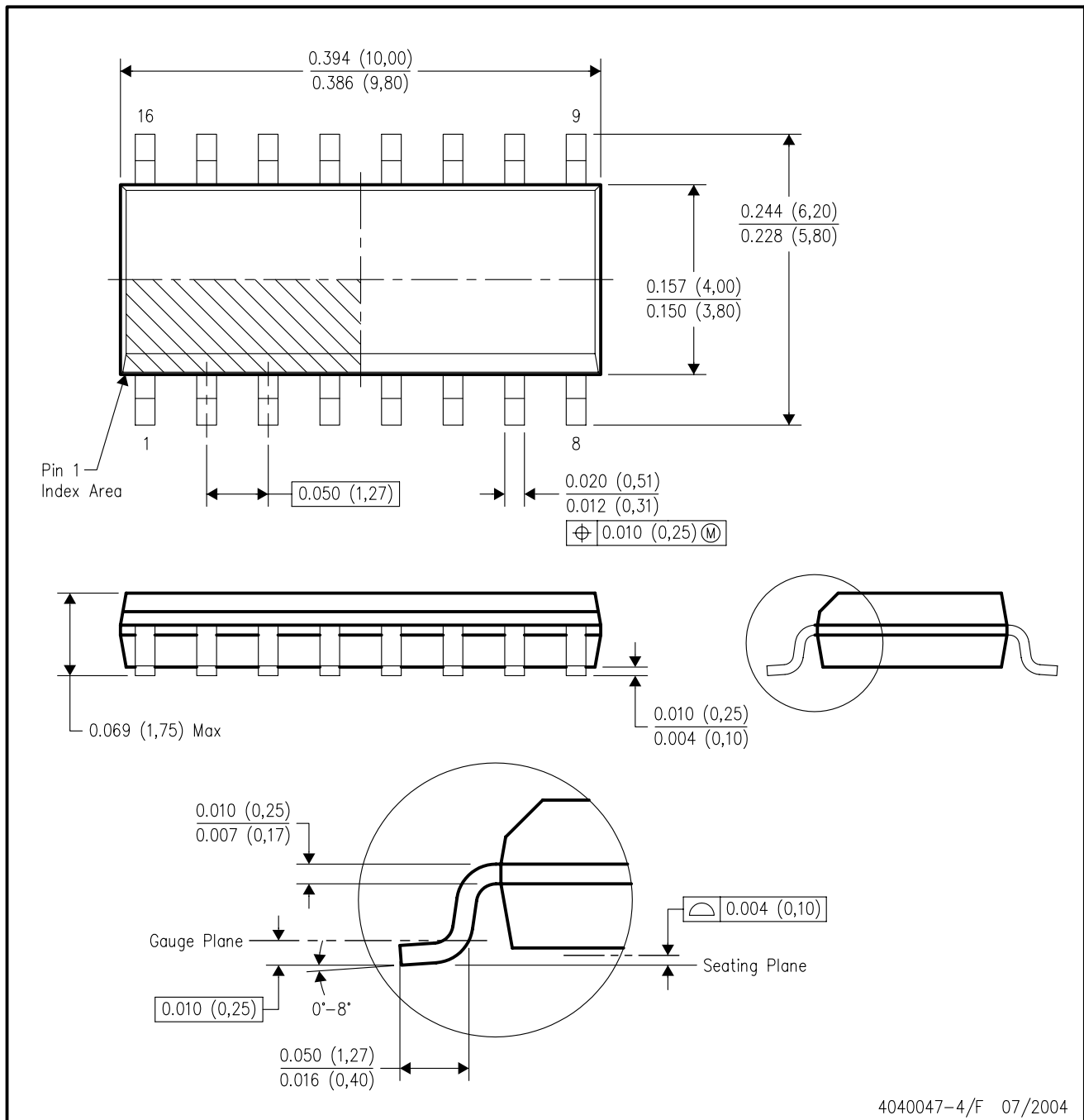
24 PINS SHOWN



- NOTES: A. All linear dimensions are in millimeters.  
 B. This drawing is subject to change without notice.  
 C. Body dimensions do not include mold flash or protrusion, not to exceed 0,15 per side.  
 D. Falls within JEDEC: 24/48 Pins – MO-153  
 14/16/20/56 Pins – MO-194

D (R-PDSO-G16)

PLASTIC SMALL-OUTLINE PACKAGE



- NOTES:
- A. All linear dimensions are in inches (millimeters).
  - B. This drawing is subject to change without notice.
  - C. Body dimensions do not include mold flash or protrusion not to exceed 0.006 (0,15).
  - D. Falls within JEDEC MS-012 variation AC.

DB (R-PDSO-G\*\*)

PLASTIC SMALL-OUTLINE

28 PINS SHOWN



- NOTES: A. All linear dimensions are in millimeters.  
 B. This drawing is subject to change without notice.  
 C. Body dimensions do not include mold flash or protrusion not to exceed 0,15.  
 D. Falls within JEDEC MO-150

PW (R-PDSO-G\*\*)

PLASTIC SMALL-OUTLINE PACKAGE

14 PINS SHOWN



4040064/F 01/97

- NOTES: A. All linear dimensions are in millimeters.  
 B. This drawing is subject to change without notice.  
 C. Body dimensions do not include mold flash or protrusion not to exceed 0,15.  
 D. Falls within JEDEC MO-153

## IMPORTANT NOTICE

Texas Instruments Incorporated and its subsidiaries (TI) reserve the right to make corrections, modifications, enhancements, improvements, and other changes to its products and services at any time and to discontinue any product or service without notice. Customers should obtain the latest relevant information before placing orders and should verify that such information is current and complete. All products are sold subject to TI's terms and conditions of sale supplied at the time of order acknowledgment.

TI warrants performance of its hardware products to the specifications applicable at the time of sale in accordance with TI's standard warranty. Testing and other quality control techniques are used to the extent TI deems necessary to support this warranty. Except where mandated by government requirements, testing of all parameters of each product is not necessarily performed.

TI assumes no liability for applications assistance or customer product design. Customers are responsible for their products and applications using TI components. To minimize the risks associated with customer products and applications, customers should provide adequate design and operating safeguards.

TI does not warrant or represent that any license, either express or implied, is granted under any TI patent right, copyright, mask work right, or other TI intellectual property right relating to any combination, machine, or process in which TI products or services are used. Information published by TI regarding third-party products or services does not constitute a license from TI to use such products or services or a warranty or endorsement thereof. Use of such information may require a license from a third party under the patents or other intellectual property of the third party, or a license from TI under the patents or other intellectual property of TI.

Reproduction of information in TI data books or data sheets is permissible only if reproduction is without alteration and is accompanied by all associated warranties, conditions, limitations, and notices. Reproduction of this information with alteration is an unfair and deceptive business practice. TI is not responsible or liable for such altered documentation.

Resale of TI products or services with statements different from or beyond the parameters stated by TI for that product or service voids all express and any implied warranties for the associated TI product or service and is an unfair and deceptive business practice. TI is not responsible or liable for any such statements.

Following are URLs where you can obtain information on other Texas Instruments products and application solutions:

| <b>Products</b>  |  | <b>Applications</b> |  |
|------------------|--|---------------------|--|
| Amplifiers       | <a href="http://amplifier.ti.com">amplifier.ti.com</a>             | Audio               | <a href="http://www.ti.com/audio">www.ti.com/audio</a>                   |
| Data Converters  | <a href="http://dataconverter.ti.com">dataconverter.ti.com</a>     | Automotive          | <a href="http://www.ti.com/automotive">www.ti.com/automotive</a>         |
| DSP              | <a href="http://dsp.ti.com">dsp.ti.com</a>                         | Broadband           | <a href="http://www.ti.com/broadband">www.ti.com/broadband</a>           |
| Interface        | <a href="http://interface.ti.com">interface.ti.com</a>             | Digital Control     | <a href="http://www.ti.com/digitalcontrol">www.ti.com/digitalcontrol</a> |
| Logic            | <a href="http://logic.ti.com">logic.ti.com</a>                     | Military            | <a href="http://www.ti.com/military">www.ti.com/military</a>             |
| Power Mgmt       | <a href="http://power.ti.com">power.ti.com</a>                     | Optical Networking  | <a href="http://www.ti.com/opticalnetwork">www.ti.com/opticalnetwork</a> |
| Microcontrollers | <a href="http://microcontroller.ti.com">microcontroller.ti.com</a> | Security            | <a href="http://www.ti.com/security">www.ti.com/security</a>             |
|                  |  | Telephony           | <a href="http://www.ti.com/telephony">www.ti.com/telephony</a>           |
|                  |  | Video & Imaging     | <a href="http://www.ti.com/video">www.ti.com/video</a>                   |
|                  |  | Wireless            | <a href="http://www.ti.com/wireless">www.ti.com/wireless</a>             |

Mailing Address: Texas Instruments  
Post Office Box 655303 Dallas, Texas 75265