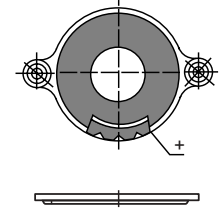


Micro-Miniature Low Profile Speakers* (continued)

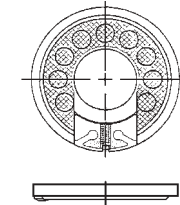
Round Plastic Frame Types

Part Number	Frame Diameter (mm)	Frame Depth (mm)	Rated Power (Watts)		Cone Material	Resonant Frequency (Hz)	Frequency Response (Hz)	SPL (dB)	Net Weight (Grams)
			Nom.	Max.					
SR430RMSS	11	4.3	0.07	0.1	Mylar	850 ± 20%	Fo ~ 10000	74	1.2
SR800RMS	20	4.2	0.1	0.2	Mylar	800 ± 20%	Fo ~ 5300	71	1.7
S100RMSS	28	3.9	0.1	0.2	Mylar	500 ± 20%	Fo ~ 6300	78	2.9
S100RMSS-R2W	28	4.3	0.2	0.3	Mylar	850 ± 20%	Fo ~ 5600	82	2.9
S125RMSS	30	3.9	0.2	0.3	Mylar	500 ± 20%	Fo ~ 6000	80	2.9
S150RMSS	36	3.8	0.1	0.2	Mylar	420 ± 20%	Fo ~ 6000	82	4.6
S150RMSS-R2W	36	4.0	0.2	0.4	Mylar	530 ± 20%	Fo ~ 7000	82	4.6
S150RMSS-R3W	38	4.2	0.3	0.6	Mylar	380 ± 20%	Fo ~ 20000	80	6
S160RMSS	40	4.4	0.3	0.6	Mylar	420 ± 20%	Fo ~ 5000	84	6.8
S160RMSS-R5W	40	4.1	0.5	1.0	Mylar	460 ± 20%	Fo ~ 20000	86	5.7

S160RMSS-R5W



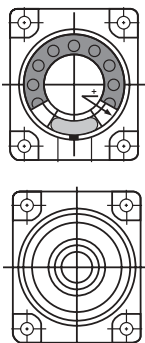
All Others



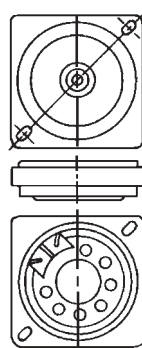
Square Plastic Frame Types

Part Number	Frame Diameter (mm)	Frame Depth (mm)	Rated Power (Watts)		Cone Material	Resonant Frequency (Hz)	Frequency Response (Hz)	SPL (dB)	Net Weight (Grams)	Mounting Dimensions Dia. (mm)
			Nom.	Max.						
S100SLA	27 x 23	3.7	0.5	1.0	Mylar	650 ± 20%	Fo ~ 20000	78	2.8	18 x 22
S125SLA	32 x 32	4.5	0.2	0.4	Mylar	800 ± 20%	Fo ~ 7000	80	3.6	37.5
S150SLA	40 x 40	4.5	0.2	0.3	Mylar	550 ± 20%	Fo ~ 8000	82	5.8	46.8
S150SLA-R5W	40 x 40	4.8	0.5	1.0	Mylar	550 ± 20%	Fo ~ 10000	89	9.0	46.8

S100SLA



All Others

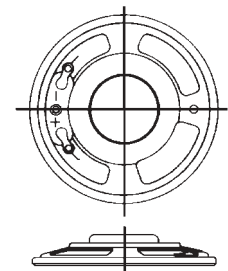


Sub-Miniature Low Profile Speakers*

Height 5.0 mm and Up

Round Metal Frame Types

Part Number	Frame Diameter (mm)	Frame Depth (mm)	Rated Power (Watts)		Cone Material	Resonant Frequency (Hz)	Frequency Response (Hz)	SPL (dB)	Net Weight (Grams)
			Nom.	Max.					
SR900RL-M	23	5.4	0.5	1.0	Mylar	670 ± 20%	Fo ~ 20000	80	4
S125RL-M	30	5.0	0.5	1.0	Mylar	600 ± 20%	Fo ~ 6500	86	5.6
S150RLS	38	8.0	0.1	0.2	Paper	700 ± 20%	Fo ~ 3000	85	10.4
S150RL-R2W	40	8.2	0.25	0.5	Paper	530 ± 20%	Fo ~ 4700	81	10.2
S160RL	40	5.0	1.0	2.0	Paper	430 ± 20%	Fo ~ 6500	90	9.4
S175RL	45	8.3	0.1	0.2	Paper	470 ± 20%	Fo ~ 4500	82	11.8
S200RL	50	8.8	0.25	0.5	Paper	450 ± 20%	Fo ~ 4000	84	12.8
S200RL-R2W	50	8.8	0.25	0.5	Paper	480 ± 20%	Fo ~ 4000	87	12.8
S200RL-M-R3W	50	7.5	0.3	0.6	Mylar	400 ± 20%	Fo ~ 5000	85	13.1
S225RL	57	9.7	0.3	0.5	Paper	390 ± 20%	Fo ~ 3800	93	14.8



*Standard voice coil impedance 8 ohms ± 15%. These speakers can be supplied with a variety of voice coil impedances. The most common impedances are 4, 16, 32, 45 and 100 ohms.