

6

5

4

3

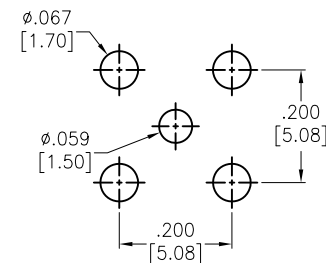
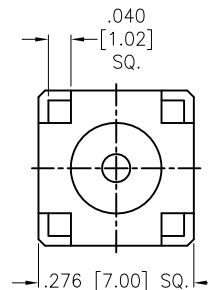
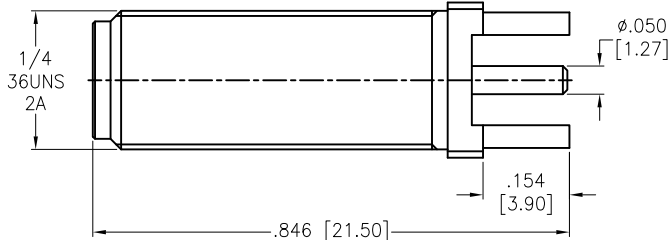
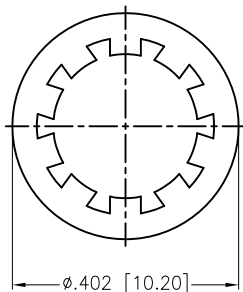
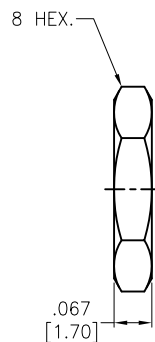
2

1

APPROVED: \_\_\_\_\_

DATE: \_\_\_\_\_ TITLE: \_\_\_\_\_

Rev	AWO #	Description	Date	Appr
-		RELEASED	4/20/16	



RECOMMENDED PCB LAYOUT

HEX NUT	BRASS	GOLD
WASHER	STEEL	GOLD
CONTACT PIN	BRASS	GOLD
INSULATOR	PTFE	WHITE
BARREL	BRASS	GOLD
DESCRIPTION	MATERIAL	FINISH

**SPECIFICATIONS:**

Electrical:  
 Nominal Impedance: 50 ohms  
 Frequency range: DC 0-18 GHz  
 Working voltage: 335 Volts max  
 Proof voltage: 1000 Volts  
 Temperature Rating:  
 Operating temperature: -65°C to +165°C

Environmental:  
 Lead free, RoHS compliant.



UNLESS OTHERWISE SPECIFIED ALL DIMENSIONS ARE INCHES [MM] TOLERANCES: EXCEPT AS NOTED		<b>ADAM TECH</b> 909 Rahway Avenue, Union, NJ 07083 Phone: 908-687-5000 Fax: 908-687-5710	
INCHES HOLES			
.X ± .10	Ø.X ± .10	TITLE <b>SMA JACK EDGE CARD MOUNT PCB, STRAIGHT</b>	
.XX ± .020	Ø.XX ± .015		
.XXX ± .015	Ø.XXX ± .010		
APPROVALS		DATE	
DRAWN	HR	4/20/16	
CHECKED	MW	4/20/16	
APPROVED			
SIZE	PART NO.	REV.	
X	RF2-152-T-00-50-G-HDW	-	
REF: S00277T	SCALE: NTS	SHEET 1 OF 1	

6

5

4

3

2

1