

Panel Potentiometer

Model P09x Series



Features:

- 9 mm rotary
- Multi-ganged
- 100,000 cycle life
- Metal shaft / bushing
- Switch / push-lock option
- Concentric shaft option
- Center tap option



Model Styles Available

| | |
|--|--------|
| Side Adjust, PCB pins, up to 8 gangs | P09xN |
| Side Adjust, PCB pins, up to 8 gangs, with Switch | P09xS |
| Top Adjust, PCB pins, up to 2 gangs | P09x5N |
| Side Adjust, PCB pins, with Push-Lock, up to 2 gangs | P09xP |
| PCB pins, with Concentric Shaft | P09xC |
| PCB pins, with Center Tap | P09xT |

Electrical

| | |
|--------------------------------|---------------------------------------|
| Resistance Range, Ohms | 1K-500K |
| Standard Resistance Tolerance | ± 20% |
| Residual Resistance | 20 ohms max. |
| Input Voltage, maximum | 50 Vac max. |
| Power rating, Watts | Taper B: 0.05W Other Tapers: .025W |
| Dielectric Strength | 300Vac, 1 minute |
| Insulation Resistance, Minimum | 100M ohms at 250Vdc |
| Sliding Noise | 100mV max. |
| Gang Error (Multi-ganged) | -40dB – 0dB, ±3dB |
| Switch Contact Resistance | < 100 milliohms |
| Switch Power Rated | 3.0A at 16Vdc |

Mechanical

| | |
|----------------------------------|-------------------|
| Total Mechanical Travel | 300°± 10° |
| Static Stop Strength | 50 oz-in |
| Rotational Torque | 0.5 to 1.25 oz-in |
| Switch Rotational Angle, Maximum | 50° |

General Note

TT Electronics reserves the right to make changes in product specification without notice or liability. All information is subject to TT Electronics' own data and is considered accurate at time of going to print.

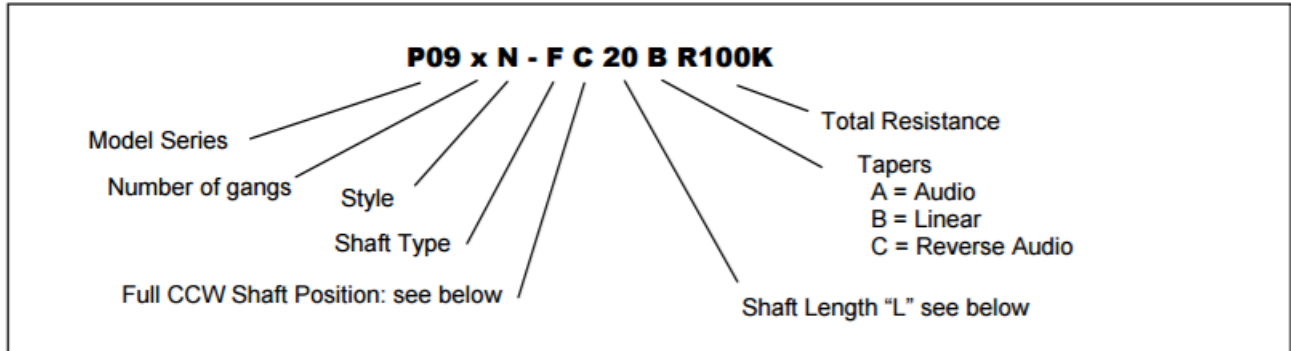
© TT electronics plc

TT Electronics | BI Technologies
413 Rood RD, Suite 7
Calexico, CA 92231
Ph: +1 714 447 2345
www.ttelectronics.com/bi-technologies

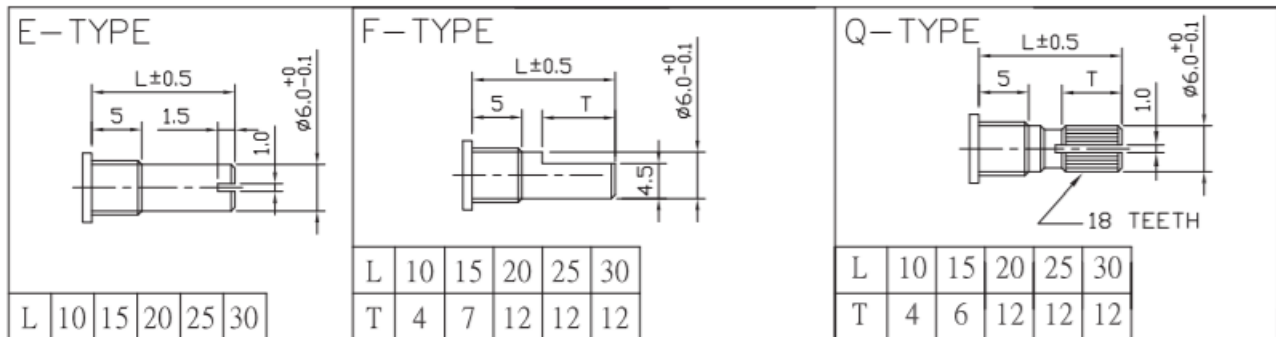
Environmental

| | |
|-----------------------------|----------------|
| Operating Temperature Range | -40°C to +85°C |
| Rotational Life | 100,000 cycles |

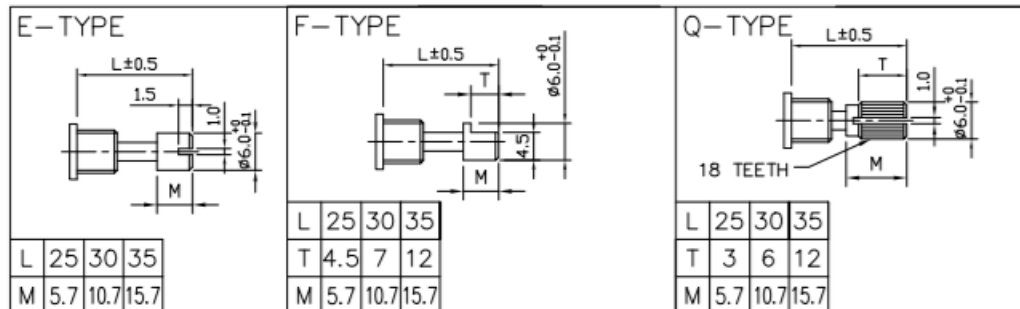
Ordering



Shaft Types (P09xN, P09xS, P09x5N)



Shaft Types for Push-Lock (P09xP)



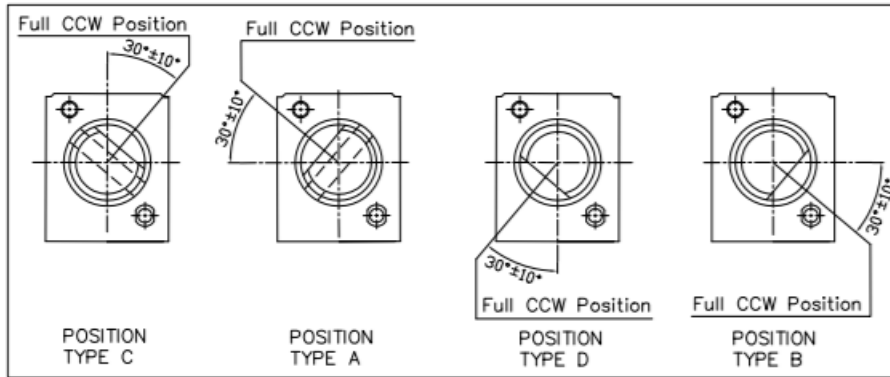
Panel Potentiometer

Model P09x Series



Shaft Position (F-Type Shaft)

Dashed lines on Type "C" and Type "A" shows position of adjustment slot for E-Type and Q-Type shafts

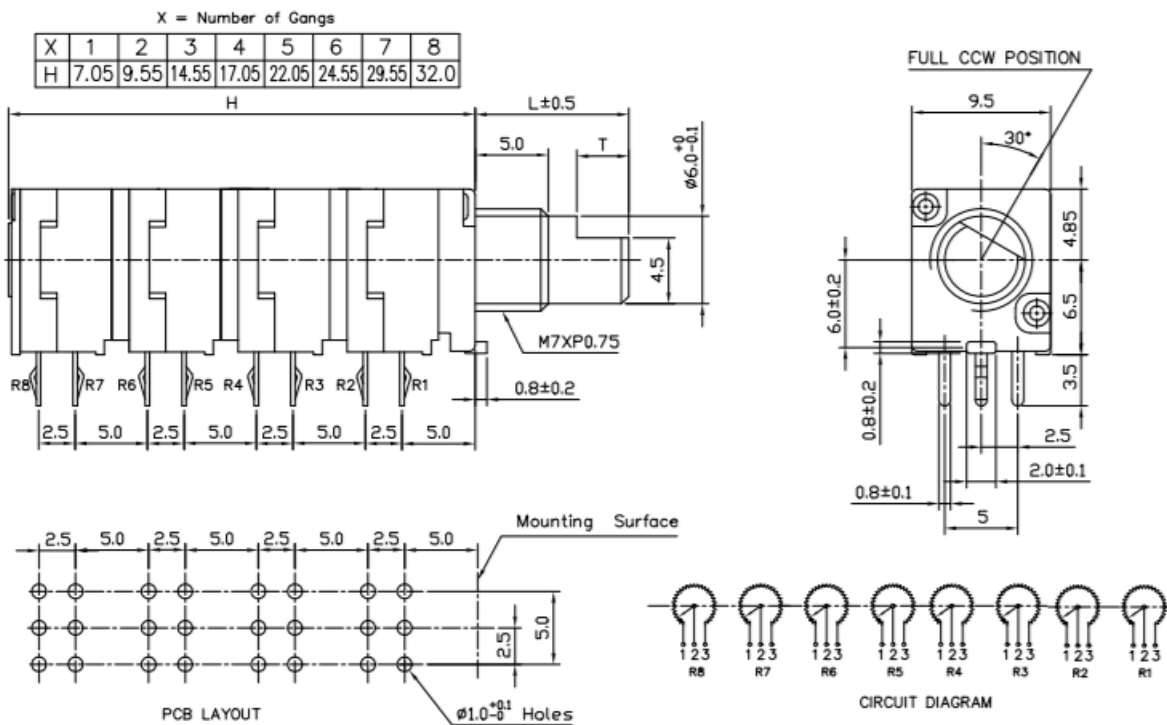


STANDARD RESISTANCE VALUES, OHMS

| | | | | | | | | |
|----|----|----|-----|-----|-----|------|------|------|
| 1K | 2K | 5K | 10K | 20K | 50K | 100K | 200K | 500K |
|----|----|----|-----|-----|-----|------|------|------|

Outline Drawings

Model P09xN (Side Adjust, PCB pins, up to 8 gangs)



General Note
 TT Electronics reserves the right to make changes in product specification without notice or liability. All information is subject to TT Electronics' own data and is considered accurate at time of going to print.

© TT electronics plc

TT Electronics | BI Technologies
 413 Rood RD, Suite 7
 Calexico, CA 92231
 Ph: +1 714 447 2345
www.ttelectronics.com/bi-technologies

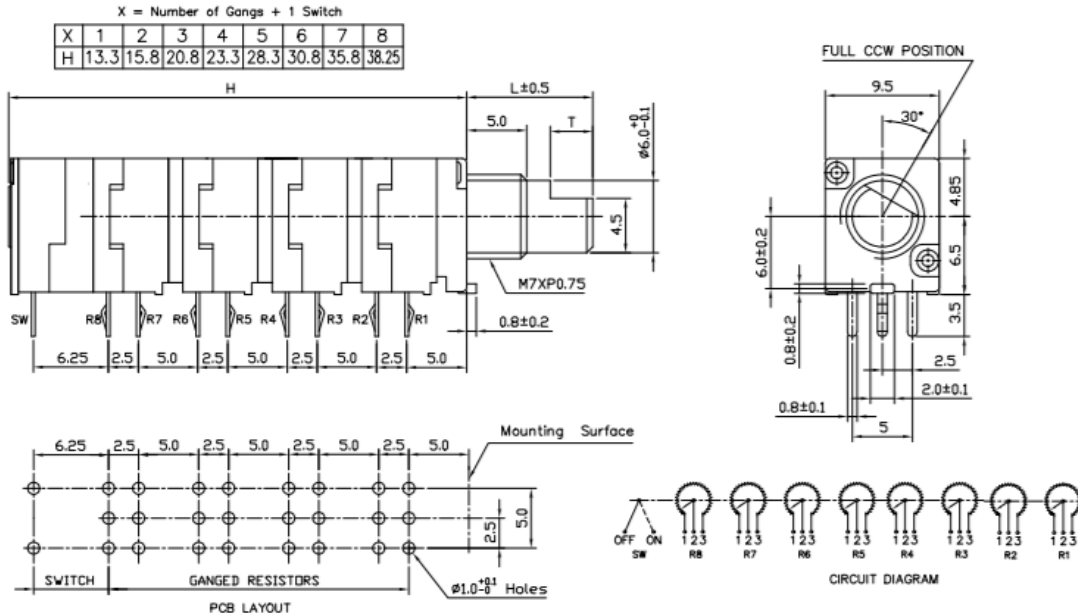
Panel Potentiometer

Model P09x Series

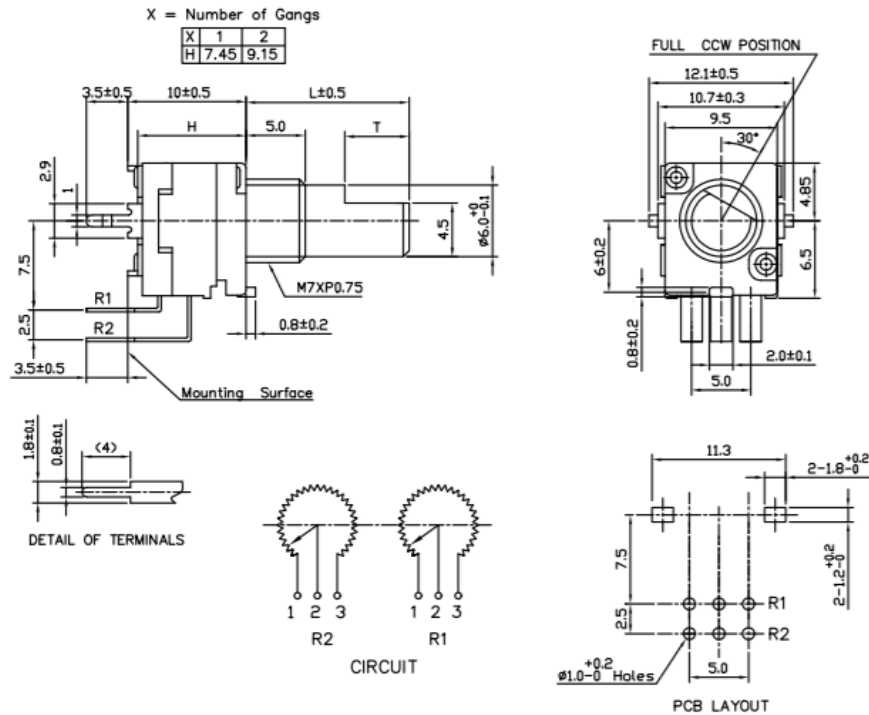


Outline Drawings

Model P09xS (Side Adjust, PCB pins, up to 8 gangs, with Switch)



Model P09x5N (Top Adjust, PCB pins, up to 2 gangs)



General Note
 TT Electronics reserves the right to make changes in product specification without notice or liability. All information is subject to TT Electronics' own data and is considered accurate at time of going to print.

© TT electronics plc

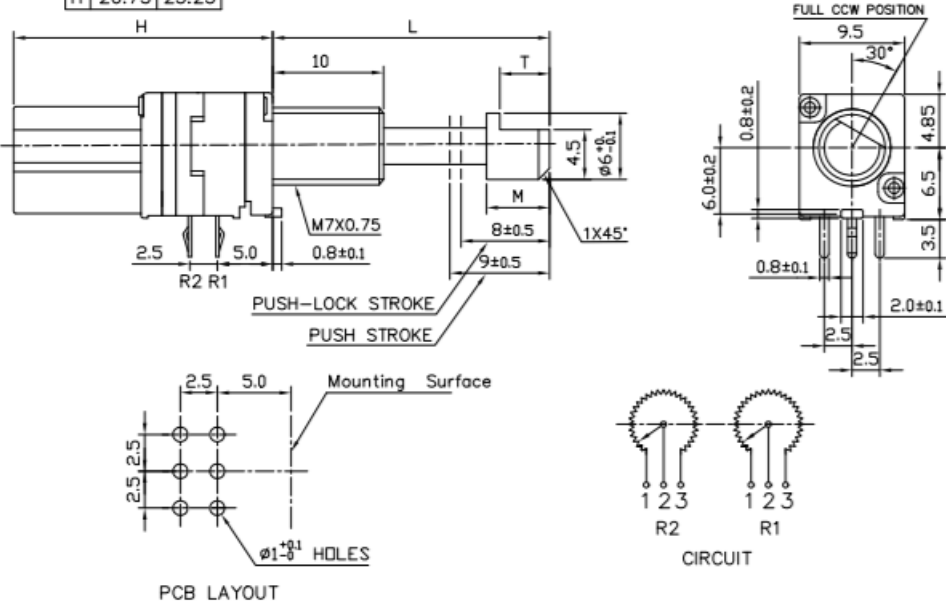
TT Electronics | BI Technologies
 413 Rood RD, Suite 7
 Calexico, CA 92231
 Ph: +1 714 447 2345
www.ttelectronics.com/bi-technologies

Outline Drawings

Model P09xP (Side Adjust, PCB pins, with Push-Lock, up to 2 gangs)

X = Number of Gangs

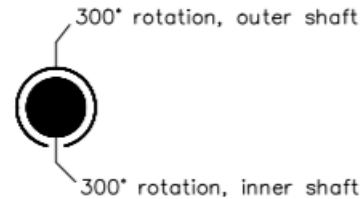
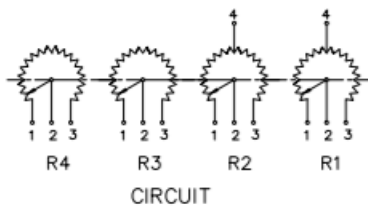
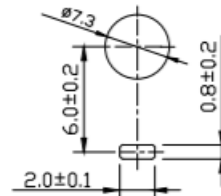
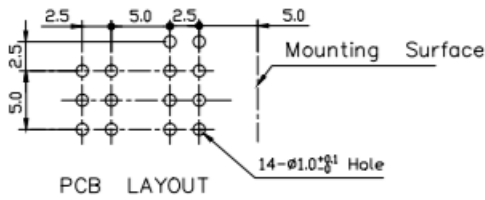
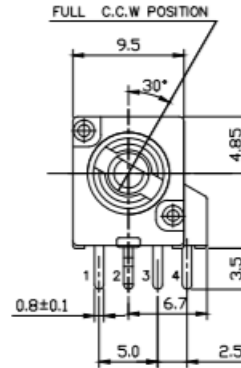
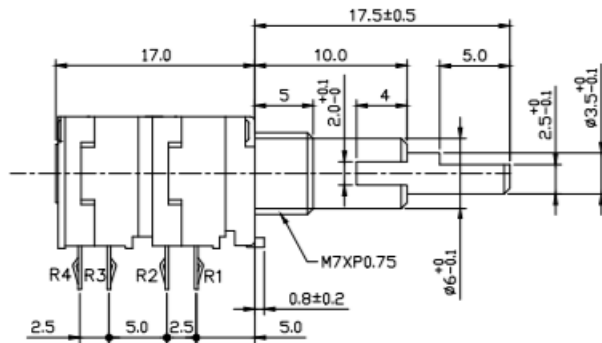
| | | |
|---|-------|-------|
| X | 1 | 2 |
| H | 20.75 | 23.25 |



General Note
 TT Electronics reserves the right to make changes in product specification without notice or liability. All information is subject to TT Electronics' own data and is considered accurate at time of going to print.

Outline Drawings

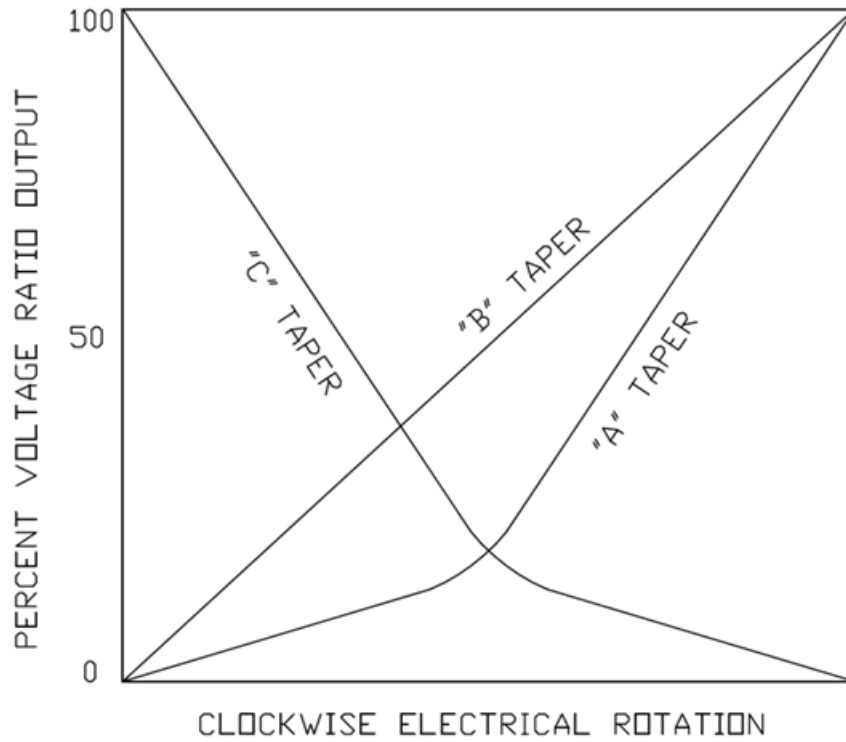
Model P09xC and P09xT (PCB pins with Concentric Shaft and Center Tap Options)
This Diagram shows both options
Please consult factory for details



General Note
 TT Electronics reserves the right to make changes in product specification without notice or liability. All information is subject to TT Electronics' own data and is considered accurate at time of going to print.

Panel Potentiometer

Model P09x Series



General Note
TT Electronics reserves the right to make changes in product specification without notice or liability. All information is subject to TT Electronics' own data and is considered accurate at time of going to print.

© TT electronics plc

TT Electronics | BI Technologies
413 Rood RD, Suite 7
Calexico, CA 92231
Ph: +1 714 447 2345
www.ttelectronics.com/bi-technologies