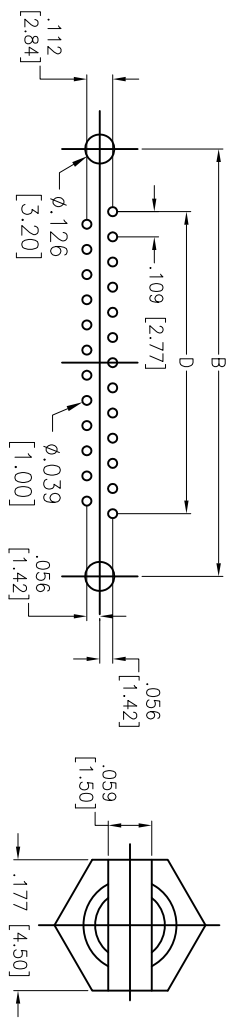
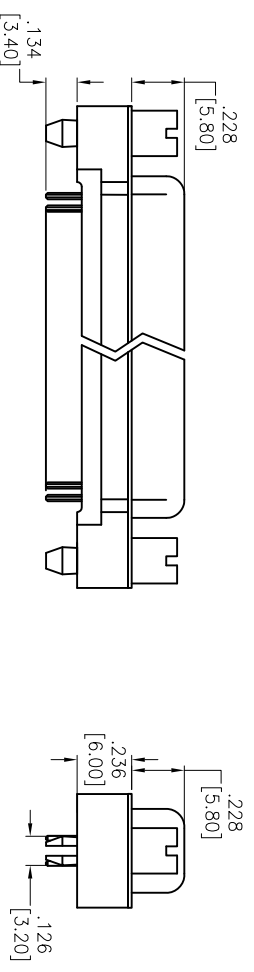
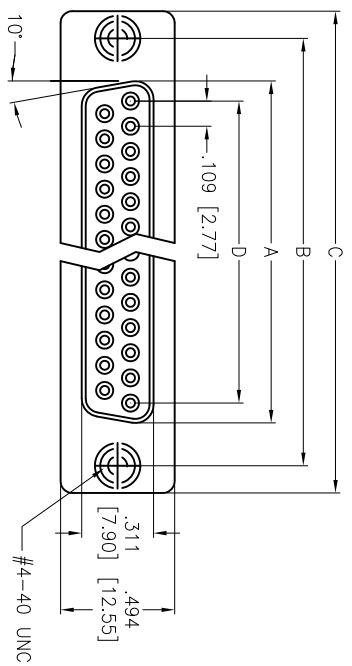
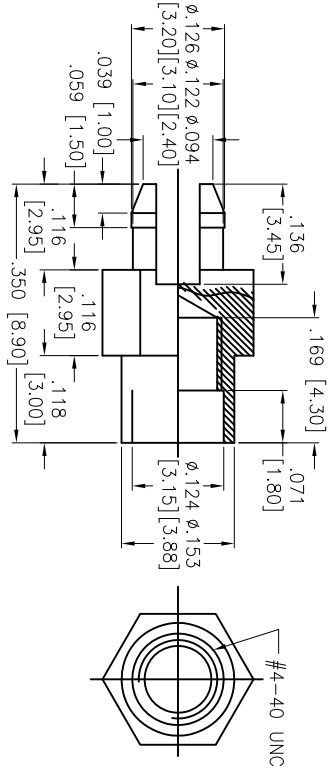
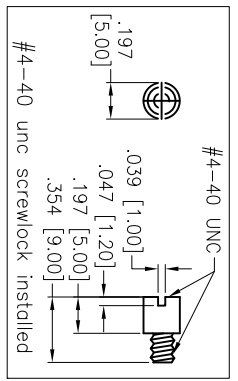


APPROVED: _____
 DATE: _____ TITLE: _____



RECOMMENDED PCB LAYOUT



Positions	A	B	C	D
09	.643 [16.33]	.984 [24.99]	1.213 [30.81]	.436 [11.08]
15	.972 [24.70]	1.311 [33.30]	1.543 [39.20]	.763 [19.39]
25	1.512 [38.40]	1.852 [47.04]	2.088 [53.05]	1.309 [33.24]
37	2.157 [54.80]	2.500 [63.50]	2.732 [69.40]	1.963 [49.86]

ADAM TECH

909 Railway Avenue, Union, NJ 07083
 Phone: 908-687-5000 Fax: 908-687-5710

TITLE: D-SUB SOCKET, FLUSH MOUNT, STRAIGHT, PCB RIVETED ROUND JACKSCREWS W/ BOARDLOCK

SPECIFICATIONS:
 Material: Insulator: PBT, glass reinforced, rated UL 94V-0
 Insulator color: Black
 Contacts: Copper Alloy
 Shell: Steel, Nickel plated
 Hardware: Brass, Nickel plated
 Plating: Gold flash over Nickel underplate overall
 Electrical: Operating voltage: 250 VAC max
 Current rating: 3 Amps max
 Contact resistance: 20 mohms max
 Insulation resistance: 1,000 Mohms min
 Dielectric withstanding voltage: 1,000 VAC for 1 minute
 Temperature Rating: Operating temperature: -65°C to +125°C
 Environmental: Lead free, RoHS compliant

UNLESS OTHERWISE SPECIFIED ALL DIMENSIONS ARE INCHES [MM]	
TOLERANCES: EXCEPT AS NOTED	
INCHES	HOLES
.X ± .10	ØX ± .10
.XX ± .020	ØXX ± .015
.XXX ± .015	ØXXX ± .010
APPROVALS	DATE
DRAWN	6/21/10
CHECKED	
APPROVED	

REF: S00087T	SCALE: NTS	SHEET 1 OF 1
SIZE PART NO. DXXX-SA-M2-R-BL	REV. A	

Rev. A

