

## Fast-Charge ICs

### Features

- ▶ Fast charge and conditioning of nickel cadmium or nickel-metal hydride batteries
- ▶ Hysteretic PWM switch-mode current regulation or gated control of an external regulator
- ▶ Easily integrated into systems or used as a stand-alone charger
- ▶ Pre-charge qualification of temperature and voltage
- ▶ Configurable, direct LED outputs display battery and charge status
- ▶ Fast-charge termination by  $\Delta$  temperature/ $\Delta$  time, peak voltage detection,  $-\Delta V$ , maximum voltage, maximum temperature, and maximum time
- ▶ Optional top-off charge and pulsed current maintenance charging
- ▶ Logic-level controlled low-power mode ( $< 5\mu A$  standby current)

### General Description

The bq2004E and bq2004H Fast Charge ICs provide comprehensive fast charge control functions together with high-speed switching power control circuitry on a monolithic CMOS device.

Integration of closed-loop current control circuitry allows the bq2004 to be the basis of a cost-effective solution for stand-alone and system-integrated chargers for batteries of one or more cells.

Switch-activated discharge-before-charge allows bq2004E/H-based chargers to support battery conditioning and capacity determination.

High-efficiency power conversion is accomplished using the bq2004E/H as a hysteretic PWM controller for switch-mode regulation of the charging current. The bq2004E/H may alternatively be used to gate an externally regulated charging current.

Fast charge may begin on application of the charging supply, replacement of the battery, or switch depression. For safety, fast charge is inhibited unless/until the battery tempera-

ture and voltage are within configured limits.

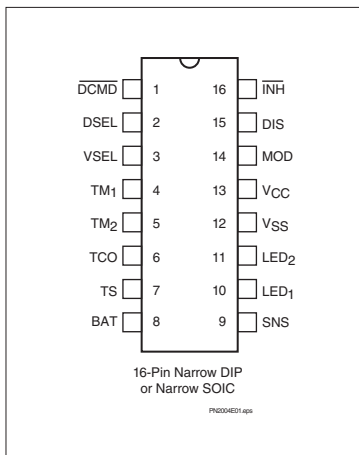
Temperature, voltage, and time are monitored throughout fast charge. Fast charge is terminated by any of the following:

- Rate of temperature rise ( $\Delta T/\Delta t$ )
- Peak voltage detection (PVD)
- Negative delta voltage ( $-\Delta V$ )
- Maximum voltage
- Maximum temperature
- Maximum time

After fast charge, optional top-off and pulsed current maintenance phases with appropriate display mode selections are available.

The bq2004H differs from the bq2004E only in that fast charge, hold-off, and top-off time units have been scaled up by a factor of two, and the bq2004H provides different display selections. Timing differences between the two ICs are illustrated in Table 1. Display differences are shown in Table 2.

### Pin Connections



SLUS081A - APRIL 2005

### Pin Names

|                          |                            |                         |                          |
|--------------------------|----------------------------|-------------------------|--------------------------|
| $\overline{\text{DCMD}}$ | Discharge command          | SNS                     | Sense resistor input     |
| DSEL                     | Display select             | LED <sub>1</sub>        | Charge status output 1   |
| VSEL                     | Voltage termination select | LED <sub>2</sub>        | Charge status output 2   |
| TM <sub>1</sub>          | Timer mode select 1        | V <sub>SS</sub>         | System ground            |
| TM <sub>2</sub>          | Timer mode select 2        | V <sub>CC</sub>         | 5.0V $\pm$ 10% power     |
| TCO                      | Temperature cutoff         | MOD                     | Charge current control   |
| TS                       | Temperature sense          | DIS                     | Discharge control output |
| BAT                      | Battery voltage            | $\overline{\text{INH}}$ | Charge inhibit input     |

# bq2004E/H

---

## Pin Descriptions

**$\overline{\text{DCMD}}$  Discharge-before-charge control input**

The  $\overline{\text{DCMD}}$  input controls the conditions that enable discharge-before-charge.  $\overline{\text{DCMD}}$  is pulled up internally. A negative-going pulse on  $\overline{\text{DCMD}}$  initiates a discharge to end-of-discharge voltage (EDV) on the BAT pin, followed by a new charge cycle start. Tying  $\overline{\text{DCMD}}$  to ground enables automatic discharge-before-charge on every new charge cycle start.

**DSEL Display select input**

This three-state input configures the charge status display mode of the LED<sub>1</sub> and LED<sub>2</sub> outputs and can be used to disable top-off and pulsed-trickle. See Table 2.

**VSEL Voltage termination select input**

This three-state input controls the voltage-termination technique used by the bq2004E/H. When high, PVD is active. When floating,  $-\Delta V$  is used. When pulled low, both PVD and  $-\Delta V$  are disabled.

**TM<sub>1</sub>-TM<sub>2</sub> Timer mode inputs**

TM<sub>1</sub> and TM<sub>2</sub> are three-state inputs that configure the fast charge safety timer, voltage termination hold-off time, "top-off", and trickle charge control. See Table 1.

**TCO Temperature cut-off threshold input**

Input to set maximum allowable battery temperature. If the potential between TS and SNS is less than the voltage at the TCO input, then fast charge or top-off charge is terminated.

**TS Temperature sense input**

Input, referenced to SNS, for an external thermister monitoring battery temperature.

**BAT Battery voltage input**

BAT is the battery voltage sense input, referenced to SNS. This is created by a high-impedance resistor-divider network connected between the positive and the negative terminals of the battery.

**SNS Charging current sense input**

SNS controls the switching of MOD based on an external sense resistor in the current path of the battery. SNS is the reference potential for both the TS and BAT pins. If SNS is connected to V<sub>SS</sub>, then MOD switches high at the beginning of charge and low at the end of charge.

**LED<sub>1</sub>-LED<sub>2</sub> Charge status outputs**

Push-pull outputs indicating charging status. See Table 2.

**V<sub>SS</sub> Ground**

**V<sub>CC</sub> V<sub>CC</sub> supply input**

5.0V,  $\pm 10\%$  power input.

**MOD Charge current control output**

MOD is a push-pull output that is used to control the charging current to the battery. MOD switches high to enable charging current to flow and low to inhibit charging current flow.

**DIS Discharge control output**

Push-pull output used to control an external transistor to discharge the battery before charging.

**$\overline{\text{INH}}$  Charge inhibit input**

When low, the bq2004E/H suspends all charge actions, drives all outputs to high impedance, and assumes a low-power operational state. When transitioning from low to high, a new charge cycle is started.

## Functional Description

Figure 2 shows a block diagram and Figure 3 shows a state diagram of the bq2004E/H.

### Battery Voltage and Temperature Measurements

Battery voltage and temperature are monitored for maximum allowable values. The voltage presented on the battery sense input, BAT, should represent a two-cell potential for the battery under charge. A resistor-divider ratio of:

$$\frac{RB1}{RB2} = \frac{N}{2} - 1$$

is recommended to maintain the battery voltage within the valid range, where N is the number of cells, RB1 is the resistor connected to the positive battery terminal, and RB2 is the resistor connected to the negative battery terminal. See Figure 1.

**Note:** This resistor-divider network input impedance to end-to-end should be at least 200kΩ and less than 1MΩ.

A ground-referenced negative temperature coefficient thermistor placed in proximity to the battery may be used as a low-cost temperature-to-voltage transducer. The temperature sense voltage input at TS is developed using a resistor-thermistor network between V<sub>CC</sub> and V<sub>SS</sub>. See Figure 1. Both the BAT and TS inputs are referenced to SNS, so the signals used inside the IC are:

$$V_{BAT} - V_{SNS} = V_{CELL}$$

and

$$V_{TS} - V_{SNS} = V_{TEMP}$$

### Discharge-Before-Charge

The  $\overline{DCMD}$  input is used to command discharge-before-charge via the DIS output. Once activated, DIS becomes active (high) until V<sub>CELL</sub> falls below V<sub>EDV</sub>, at which time DIS goes low and a new fast charge cycle begins.

The  $\overline{DCMD}$  input is internally pulled up to V<sub>CC</sub> (its inactive state). Leaving the input unconnected, therefore, results in disabling discharge-before-charge. A negative going pulse on DCMD initiates discharge-before-charge at any time regardless of the current state of the bq2004. If DCMD is tied to V<sub>SS</sub>, discharge-before-charge will be the first step in all newly started charge cycles.

### Starting A Charge Cycle

A new charge cycle is started by:

1. Application of V<sub>CC</sub> power.
2. V<sub>CELL</sub> falling through the maximum cell voltage, V<sub>MCV</sub> where:

$$V_{MCV} = 0.8 * V_{CC} \pm 30mV$$

3. A transition on the  $\overline{INH}$  input from low to high.

If  $\overline{DCMD}$  is tied low, a discharge-before-charge will be executed as the first step of the new charge cycle. Otherwise, pre-charge qualification testing will be the first step.

The battery must be within the configured temperature and voltage limits before fast charging begins.

The valid battery voltage range is V<sub>EDV</sub> < V<sub>BAT</sub> < V<sub>MCV</sub> where:

$$V_{EDV} = 0.4 * V_{CC} \pm 30mV$$

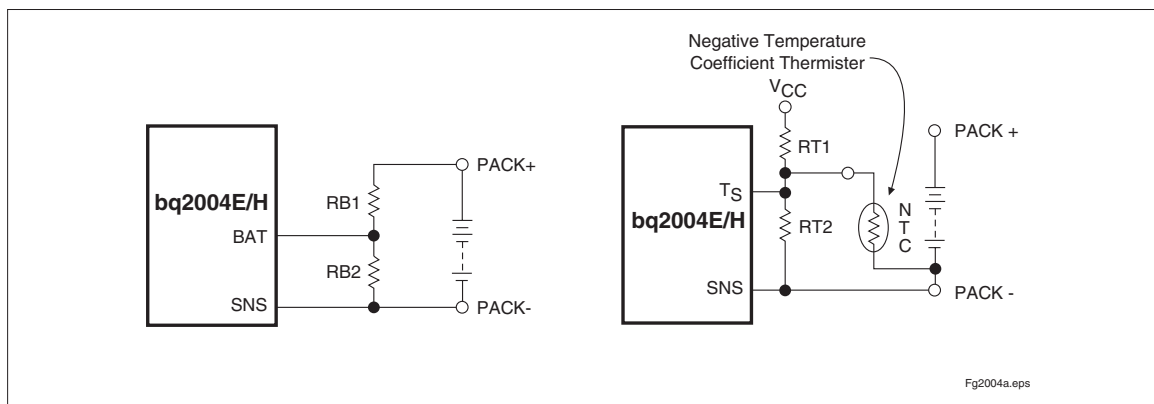


Figure 1. Voltage and Temperature Monitoring

## bq2004E/H

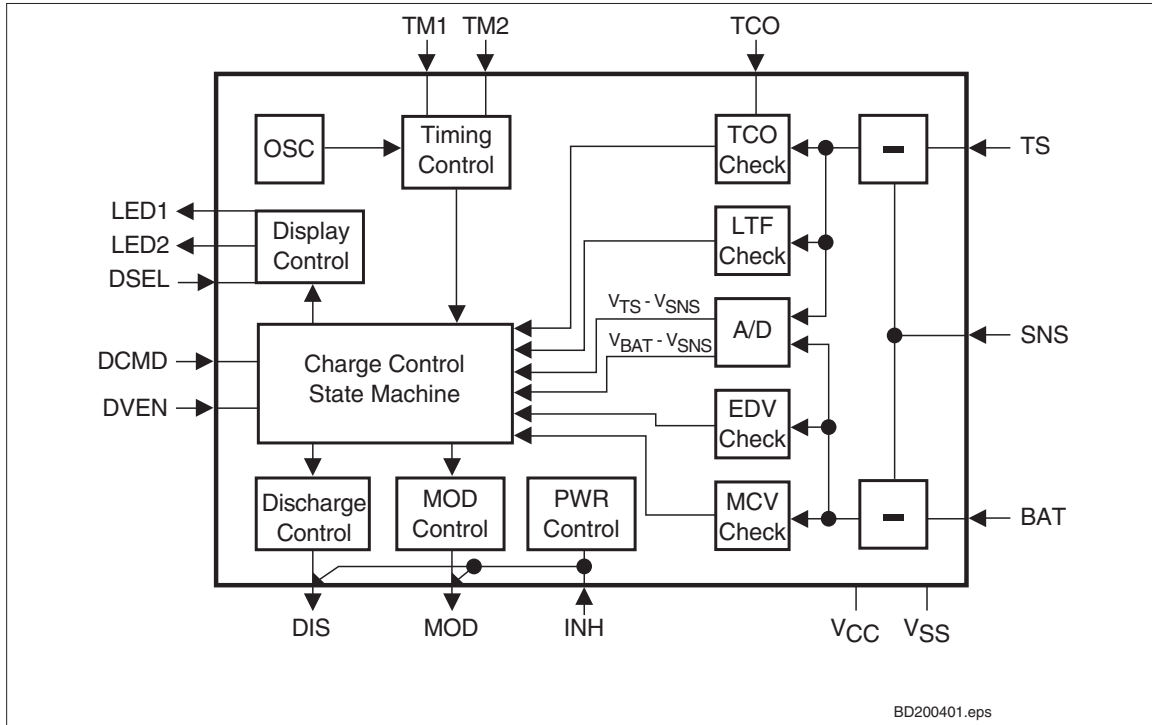


Figure 2. Block Diagram

The valid temperature range is  $V_{HTF} < V_{TEMP} < V_{LTF}$ , where:

$$V_{LTF} = 0.4 * V_{CC} \pm 30mV$$

$$V_{HTF} = [(1/3 * V_{LTF}) + (2/3 * V_{TCO})] \pm 30mV$$

$V_{TCO}$  is the voltage presented at the TCO input pin, and is configured by the user with a resistor divider between  $V_{CC}$  and ground. The allowed range is  $0.2$  to  $0.4 * V_{CC}$ .

If the temperature of the battery is out of range, or the voltage is too low, the chip enters the charge pending state and waits for both conditions to fall within their allowed limits. During the charge-pending mode, the IC first applies a top-off charge to the battery.

The top-off charge, at the rate of  $1/8$  of the fast charge, continues until the fast-charge conditions are met or the top-off time-out period is exceeded. The IC then trickle charges until the fast-charge conditions are met. There is no time limit on the charge pending state; the charger remains in this state as long as the voltage or temperature conditions are outside of the allowed limits. If the voltage is too high, the chip goes to the battery absent state and waits until a new charge cycle is started.

Fast charge continues until termination by one or more of the six possible termination conditions:

- Delta temperature/delta time ( $\Delta T/\Delta t$ )
- Peak voltage detection (PVD)
- Negative delta voltage ( $-\Delta V$ )
- Maximum voltage
- Maximum temperature
- Maximum time

### PVD and $-\Delta V$ Termination

The bq2004E/H samples the voltage at the BAT pin once every 34s. When  $-\Delta V$  termination is selected, if  $V_{CELL}$  is lower than any previously measured value by  $12mV \pm 4mV$  ( $6mV/cell$ ), fast charge is terminated. When PVD termination is selected, if  $V_{CELL}$  is lower than any previously measured value by  $6mV \pm 2mV$  ( $3mV/cell$ ), fast charge is terminated. The PVD and  $-\Delta V$  tests are valid in the range  $0.4 * V_{CC} < V_{CELL} < 0.8 * V_{CC}$ .

| VSEL Input | Voltage Termination |
|------------|---------------------|
| Low        | Disabled            |
| Float      | -ΔV                 |
| High       | PVD                 |

### Voltage Sampling

Each sample is an average of voltage measurements. The IC takes 32 measurements in PVD mode and 16 measurements in -ΔV mode. The resulting sample periods (9.17ms and 18.18ms, respectively) filter out harmonics centered around 55Hz and 109Hz. This technique minimizes the effect of any AC line ripple that may feed through the power supply from either 50Hz or 60Hz AC sources. Tolerance on all timing is ±16%.

### Temperature and Voltage Termination Hold-off

A hold-off period occurs at the start of fast charging. During the hold-off period, -ΔV and ΔT/Δt termination are disabled. The MOD pin is enabled at a duty cycle of 260μs active for every 1820μs inactive. This modulation results in an average rate 1/8th that of the fast charge rate. This avoids premature termination on the voltage spikes sometimes produced by older batteries when fast-charge current is first applied. Maximum voltage and maximum temperature terminations are not affected by the hold-off period.

### ΔT/Δt Termination

The bq2004E/H samples at the voltage at the TS pin every 34s, and compares it to the value measured two samples earlier. If V<sub>TEMP</sub> has fallen 16mV ±4mV or more, fast charge is terminated. The ΔT/Δt termination test is valid only when V<sub>TCO</sub> < V<sub>TEMP</sub> < V<sub>LTF</sub>.

### Temperature Sampling

Each sample is an average of 16 voltage measurements. The resulting sample period (18.18ms) filters out harmonics around 55Hz. This technique minimizes the effect of any AC line ripple that may feed through the power supply from either 50Hz or 60Hz AC sources. Tolerance on all timing is ±16%.

### Maximum Voltage, Temperature, and Time

Anytime V<sub>CELL</sub> rises above V<sub>MCV</sub>, the LEDs go off and current flow into the battery ceases immediately. If V<sub>CELL</sub> then falls back below V<sub>MCV</sub> before t<sub>MCV</sub> = 1.5s ±0.5s, the chip transitions to the Charge Complete state (maximum voltage termination). If V<sub>CELL</sub> remains above V<sub>MCV</sub> at the expiration of t<sub>MCV</sub>, the bq2004E/H transitions to the Battery Absent state (battery removal). See Figure 3.

Maximum temperature termination occurs anytime V<sub>TEMP</sub> falls below the temperature cutoff threshold V<sub>TCO</sub>. Charge will also be terminated if V<sub>TEMP</sub> rises above the low temperature fault threshold, V<sub>LTF</sub>, after fast charge begins.

Table 1. Fast Charge Safety Time/Hold-Off/Top-Off Table

| Corresponding Fast-Charge Rate |       | TM1   | TM2   | Typical Fast-Charge Safety Time (min) |       | Typical PVD, -ΔV Hold-Off Time (s) |       | Top-Off Rate |       | Pulse-Trickle Rate | Pulse-Trickle Period (Hz) |       |
|--------------------------------|-------|-------|-------|---------------------------------------|-------|------------------------------------|-------|--------------|-------|--------------------|---------------------------|-------|
| 2004E                          | 2004H |       |       | 2004E                                 | 2004H | 2004E                              | 2004H | 2004E        | 2004H |                    | 2004E                     | 2004H |
| C/4                            | C/8   | Low   | Low   | 325                                   | 650   | 137                                | 273   | Disabled     |       | Disabled           | Disabled                  |       |
| C/2                            | C/4   | Float | Low   | 154                                   | 325   | 546                                | 546   | Disabled     |       | C/512              | 15                        | 30    |
| 1C                             | C/2   | High  | Low   | 77                                    | 154   | 273                                | 546   | Disabled     |       | C/512              | 7.5                       | 15    |
| 2C                             | 1C    | Low   | Float | 39                                    | 77    | 137                                | 273   | Disabled     |       | C/512              | 3.75                      | 7.5   |
| 4C                             | 2C    | Float | Float | 19                                    | 39    | 68                                 | 137   | Disabled     |       | C/512              | 1.88                      | 3.75  |
| C/2                            | C/4   | High  | Float | 154                                   | 325   | 546                                | 546   | C/16         | C/32  | C/512              | 15                        | 30    |
| 1C                             | C/2   | Low   | High  | 77                                    | 154   | 273                                | 546   | C/8          | C/16  | C/512              | 7.5                       | 15    |
| 2C                             | 1C    | Float | High  | 39                                    | 77    | 137                                | 273   | C/4          | C/18  | C/512              | 3.75                      | 7.5   |
| 4C                             | 2C    | High  | High  | 19                                    | 39    | 68                                 | 137   | C/2          | C/4   | C/512              | 1.88                      | 3.75  |

Note: Typical conditions = 25°C, V<sub>CC</sub> = 5.0V.

## bq2004E/H

**Table 2. bq2004E/H LED Output Summary**

| <b>Mode 1<br/>bq2004E</b>   | <b>Charge Action State</b>                                   | <b>LED<sub>1</sub></b> | <b>LED<sub>2</sub></b>                                |
|-----------------------------|--|------------------------|---|
| DSEL = V <sub>SS</sub>      | Battery absent   | Low                    | Low   |
|                             | Fast charge pending or a discharge-before-charge in progress | High                   | High  |
|                             | Fast charging  | Low                    | High  |
|                             | Fast charge complete, top-off, and/or trickle                | High                   | Low   |
| <b>Mode 1<br/>bq2004H</b>   | <b>Charge Action State</b>                                   | <b>LED<sub>1</sub></b> | <b>LED<sub>2</sub></b>                                |
| DSEL = V <sub>SS</sub>      | Battery absent   | Low                    | Low   |
|                             | Discharge-before-charge in progress                          | High                   | High  |
|                             | Fast charge pending  | Low                    | $\frac{1}{8}$ second high<br>$\frac{1}{8}$ second low |
|                             | Fast charging  | Low                    | High  |
|                             | Fast charge complete, top-off, and/or trickle                | High                   | Low   |
| <b>Mode 2<br/>bq2004E</b>   | <b>Charge Action State (See note)</b>                        | <b>LED<sub>1</sub></b> | <b>LED<sub>2</sub></b>                                |
| DSEL = Floating             | Battery absent   | Low                    | Low   |
|                             | Fast charge pending or discharge-before-charge in progress   | High                   | High  |
|                             | Fast charging  | Low                    | High  |
|                             | Fast charge complete, top-off, and/or trickle                | High                   | Low   |
| <b>Mode 2<br/>bq2004H</b>   | <b>Charge Action State (See note)</b>                        | <b>LED<sub>1</sub></b> | <b>LED<sub>2</sub></b>                                |
| DSEL = Floating             | Battery absent   | Low                    | Low   |
|                             | Discharge-before-charge in progress                          | High                   | High  |
|                             | Fast charge pending  | Low                    | $\frac{1}{8}$ second high<br>$\frac{1}{8}$ second low |
|                             | Fast charging  | Low                    | High  |
|                             | Fast charge complete, top-off, and/or trickle                | High                   | Low   |
| <b>Mode 3<br/>bq2004E/H</b> | <b>Charge Action State</b>                                   | <b>LED<sub>1</sub></b> | <b>LED<sub>2</sub></b>                                |
| DSEL = V <sub>CC</sub>      | Battery absent   | Low                    | Low   |
|                             | Fast charge pending or discharge-before-charge in progress   | Low                    | $\frac{1}{8}$ second high<br>$\frac{1}{8}$ second low |
|                             | Fast charging  | Low                    | High  |
|                             | Fast charge complete, top-off, and/or trickle                | High                   | Low   |

**Note:** Pulse trickle is inhibited in Mode 2.

Maximum charge time is configured using the TM pin. Time settings are available for corresponding charge rates of C/4, C/2, 1C, and 2C. Maximum time-out termination is enforced on the fast-charge phase, then reset, and enforced again on the top-off phase, if selected. There is no time limit on the trickle-charge phase.

### Top-off Charge

An optional top-off charge phase may be selected to follow fast charge termination for the C/2 through 4C rates. This phase may be necessary on NiMH or other battery chemistries that have a tendency to terminate charge prior to reaching full capacity. With top-off enabled, charging continues at a reduced rate after fast-charge termination for a period of time equal to 0.235\* the fast-charge safety time (See Table 1.) During top-off, the MOD pin is enabled at a duty cycle of 260µs active for every 1820µs inactive. This modulation results in an average rate 1/8th that of the fast charge rate. Maximum voltage, time, and temperature are the only termination methods enabled during top-off.

### Pulse-Trickle Charge

Pulse-trickle charging may be configured to follow the fast charge and optional top-off charge phases to compensate for self-discharge of the battery while it is idle in the charger.

In the pulse-trickle mode, MOD is active for 260µs of a period specified by the settings of TM1 and TM2. See Table 1. The resulting trickle-charge rate is C/512. Both pulse trickle and top-off may be disabled by tying TM1 and TM2 to V<sub>SS</sub> or by selecting Mode 2 in the display.

### Charge Status Indication

Charge status is indicated by the LED<sub>1</sub> and LED<sub>2</sub> outputs. The state of these outputs in the various charge cycle phases is given in Table 2 and illustrated in Figure 3.

In all cases, if V<sub>CELL</sub> exceeds the voltage at the MCV pin, both LED<sub>1</sub> and LED<sub>2</sub> outputs are held low regardless of other conditions. Both can be used to directly drive an LED.

### Charge Current Control

The bq2004E/H controls charge current through the MOD output pin. The current control circuitry is designed to support implementation of a constant-current switching regulator or to gate an externally regulated current source.

When used in switch mode configuration, the nominal regulated current is:

$$I_{REG} = 0.225V/R_{SNS}$$

Charge current is monitored at the SNS input by the voltage drop across a sense resistor, R<sub>SNS</sub>, between the low side of the battery pack and ground. R<sub>SNS</sub> is sized to provide the desired fast charge current.

If the voltage at the SNS pin is less than V<sub>SNSLO</sub>, the MOD output is switched high to pass charge current to the battery.

When the SNS voltage is greater than V<sub>SNSHI</sub>, the MOD output is switched low—shutting off charging current to the battery.

$$V_{SNSLO} = 0.04 * V_{CC} \pm 25mV$$

$$V_{SNSHI} = 0.05 * V_{CC} \pm 25mV$$

When used to gate an externally regulated current source, the SNS pin is connected to V<sub>SS</sub>, and no sense resistor is required.

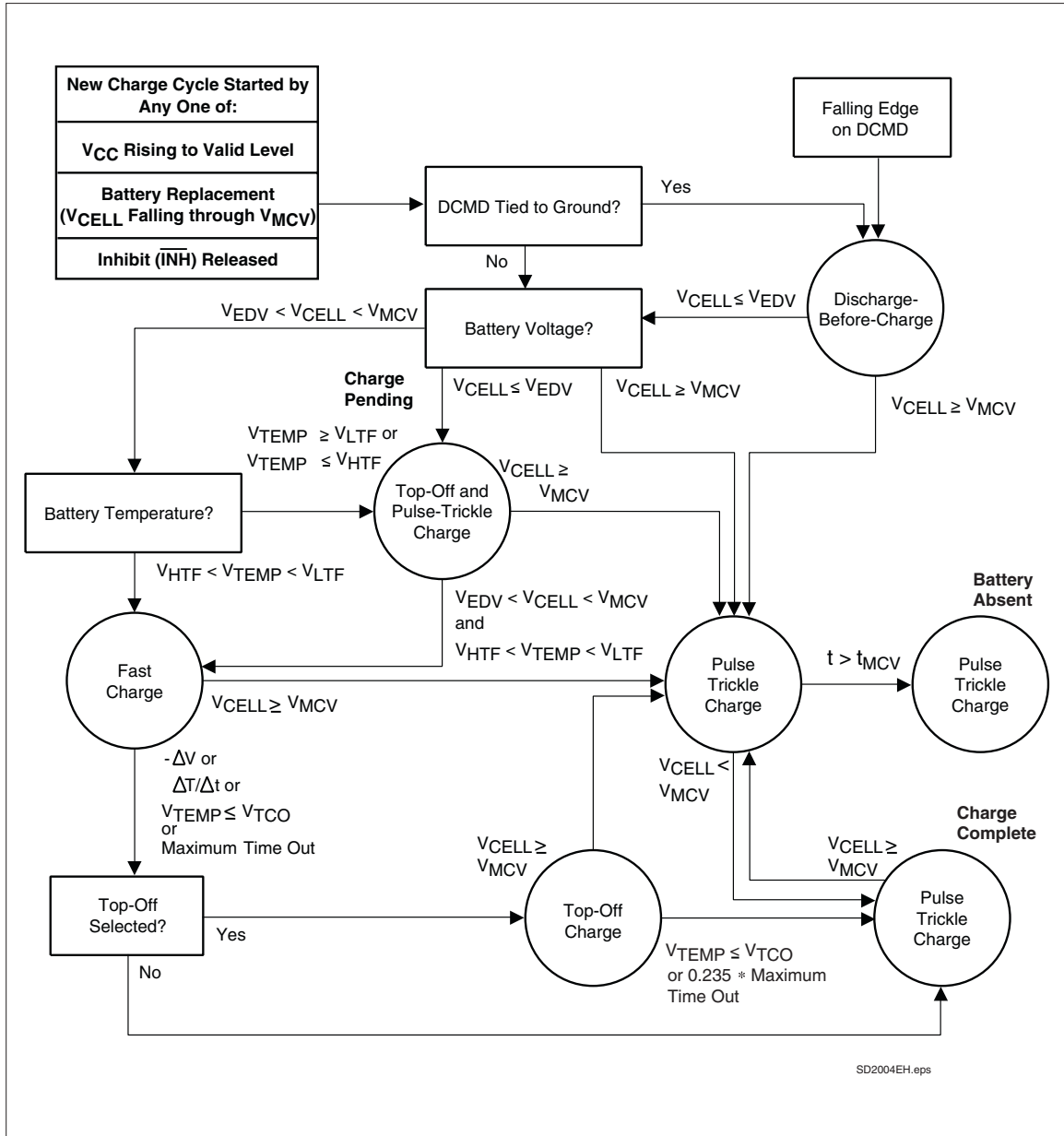


Figure 3. Charge Algorithm State Diagram

## Absolute Maximum Ratings

| Symbol              | Parameter   | Minimum | Maximum | Unit | Notes       |
|---------------------|---|---------|---------|------|-------------|
| V <sub>CC</sub>     | V <sub>CC</sub> relative to V <sub>SS</sub>   | -0.3    | +7.0    | V    |             |
| V <sub>T</sub>      | DC voltage applied on any pin excluding V <sub>CC</sub> relative to V <sub>SS</sub> | -0.3    | +7.0    | V    |             |
| T <sub>OPR</sub>    | Operating ambient temperature   | -20     | +70     | °C   | Commercial  |
| T <sub>STG</sub>    | Storage temperature   | -55     | +125    | °C   |             |
| T <sub>SOLDER</sub> | Soldering temperature   | -       | +260    | °C   | 10 sec max. |
| T <sub>BIAS</sub>   | Temperature under bias  | -40     | +85     | °C   |             |

**Note:** Permanent device damage may occur if **Absolute Maximum Ratings** are exceeded. Functional operation should be limited to the Recommended DC Operating Conditions detailed in this data sheet. Exposure to conditions beyond the operational limits for extended periods of time may affect device reliability.

## DC Thresholds (T<sub>A</sub> = T<sub>OPR</sub>; V<sub>CC</sub> ±10%)

| Symbol             | Parameter                                    | Rating  | Tolerance | Unit | Notes   |
|--------------------|--|---|-----------|------|---|
| V <sub>SNSHI</sub> | High threshold at SNS resulting in MOD = Low | 0.05 * V <sub>CC</sub>                                | ±0.025    | V    |   |
| V <sub>SNSLO</sub> | Low threshold at SNS resulting in MOD = High | 0.04 * V <sub>CC</sub>                                | ±0.025    | V    |   |
| V <sub>LTF</sub>   | Low-temperature fault                        | 0.4 * V <sub>CC</sub>                                 | ±0.030    | V    | V <sub>TEMP</sub> ≥ V <sub>LTF</sub> inhibits/terminates charge |
| V <sub>HTF</sub>   | High-temperature fault                       | (1/3 * V <sub>LTF</sub> ) + (2/3 * V <sub>TCO</sub> ) | ±0.030    | V    | V <sub>TEMP</sub> ≤ V <sub>HTF</sub> inhibits charge            |
| V <sub>EDV</sub>   | End-of-discharge voltage                     | 0.4 * V <sub>CC</sub>                                 | ±0.030    | V    | V <sub>CELL</sub> < V <sub>EDV</sub> inhibits fast charge       |
| V <sub>MCV</sub>   | Maximum cell voltage                         | 0.8 * V <sub>CC</sub>                                 | ±0.030    | V    | V <sub>CELL</sub> > V <sub>MCV</sub> inhibits/terminates charge |
| V <sub>THERM</sub> | TS input change for ΔT/Δt detection          | -16   | ±4        | mV   | V <sub>CC</sub> = 5V, T <sub>A</sub> = 25°C                     |
| -ΔV                | BAT input change for -ΔV detection           | -12   | ±4        | mV   | V <sub>CC</sub> = 5V, T <sub>A</sub> = 25°C                     |
| PVD                | BAT input change for PVD detection           | -6  | ±2        | mV   | V <sub>CC</sub> = 5V, T <sub>A</sub> = 25°C                     |

## bq2004E/H

### Recommended DC Operating Conditions (TA = TOPR)

| Symbol            | Condition   | Minimum               | Typical | Maximum               | Unit | Notes   |
|-------------------|---|-----------------------|---------|-----------------------|------|---|
| V <sub>CC</sub>   | Supply voltage  | 4.5                   | 5.0     | 5.5                   | V    |   |
| V <sub>BAT</sub>  | Battery input   | 0                     | -       | V <sub>CC</sub>       | V    |   |
| V <sub>CELL</sub> | BAT voltage potential                                 | 0                     | -       | V <sub>CC</sub>       | V    | V <sub>BAT</sub> - V <sub>SNS</sub>   |
| V <sub>TS</sub>   | Thermistor input                                      | 0                     | -       | V <sub>CC</sub>       | V    |   |
| V <sub>TEMP</sub> | TS voltage potential                                  | 0                     | -       | V <sub>CC</sub>       | V    | V <sub>TS</sub> - V <sub>SNS</sub>  |
| V <sub>TCO</sub>  | Temperature cutoff                                    | 0.2 * V <sub>CC</sub> | -       | 0.4 * V <sub>CC</sub> | V    | Valid ΔT/Δt range   |
| V <sub>IH</sub>   | Logic input high                                      | 2.0                   | -       | -                     | V    | $\overline{\text{DCMD}}$ , $\overline{\text{INH}}$  |
|                   | Logic input high                                      | V <sub>CC</sub> - 0.3 | -       | -                     | V    | TM <sub>1</sub> , TM <sub>2</sub> , DSEL, VSEL  |
| V <sub>IL</sub>   | Logic input low                                       | -                     | -       | 0.8                   | V    | $\overline{\text{DCMD}}$ , $\overline{\text{INH}}$  |
|                   | Logic input low                                       | -                     | -       | 0.3                   | V    | TM <sub>1</sub> , TM <sub>2</sub> , DSEL, VSEL  |
| V <sub>OH</sub>   | Logic output high                                     | V <sub>CC</sub> - 0.8 | -       | -                     | V    | DIS, MOD, LED <sub>1</sub> , LED <sub>2</sub> ,<br>I <sub>OH</sub> ≤ -10mA  |
| V <sub>OL</sub>   | Logic output low                                      | -                     | -       | 0.8                   | V    | DIS, MOD, LED <sub>1</sub> , LED <sub>2</sub> ,<br>I <sub>OL</sub> ≤ 10mA   |
| I <sub>CC</sub>   | Supply current  | -                     | 1       | 3                     | mA   | Outputs unloaded  |
| I <sub>SB</sub>   | Standby current                                       | -                     | -       | 1                     | μA   | $\overline{\text{INH}} = V_{\text{IL}}$   |
| I <sub>OH</sub>   | DIS, LED <sub>1</sub> , LED <sub>2</sub> , MOD source | -10                   | -       | -                     | mA   | @V <sub>OH</sub> = V <sub>CC</sub> - 0.8V   |
| I <sub>OL</sub>   | DIS, LED <sub>1</sub> , LED <sub>2</sub> , MOD sink   | 10                    | -       | -                     | mA   | @V <sub>OL</sub> = V <sub>SS</sub> + 0.8V   |
| I <sub>L</sub>    | Input leakage   | -                     | -       | ±1                    | μA   | $\overline{\text{INH}}$ , BAT, V = V <sub>SS</sub> to V <sub>CC</sub>   |
|                   | Input leakage   | 50                    | -       | 400                   | μA   | $\overline{\text{DCMD}}$ , V = V <sub>SS</sub> to V <sub>CC</sub>   |
| I <sub>IL</sub>   | Logic input low source                                | -                     | -       | 70                    | μA   | TM <sub>1</sub> , TM <sub>2</sub> , DSEL, VSEL,<br>V = V <sub>SS</sub> to V <sub>SS</sub> + 0.3V                        |
| I <sub>IH</sub>   | Logic input high source                               | -70                   | -       | -                     | μA   | TM <sub>1</sub> , TM <sub>2</sub> , DSEL, VSEL,<br>V = V <sub>CC</sub> - 0.3V to V <sub>CC</sub>                        |
| I <sub>IZ</sub>   | Tri-state   | -2                    | -       | 2                     | μA   | TM <sub>1</sub> , TM <sub>2</sub> , DSEL, and VSEL<br>should be left disconnected<br>(floating) for Z logic input state |

**Note:** All voltages relative to V<sub>SS</sub> except as noted.

## Impedance

| Symbol           | Parameter               | Minimum | Typical | Maximum | Unit |
|------------------|-------------------------|---------|---------|---------|------|
| R <sub>BAT</sub> | Battery input impedance | 50      | -       | -       | MΩ   |
| R <sub>TS</sub>  | TS input impedance      | 50      | -       | -       | MΩ   |
| R <sub>TCO</sub> | TCO input impedance     | 50      | -       | -       | MΩ   |
| R <sub>SNS</sub> | SNS input impedance     | 50      | -       | -       | MΩ   |

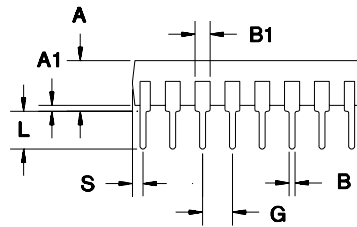
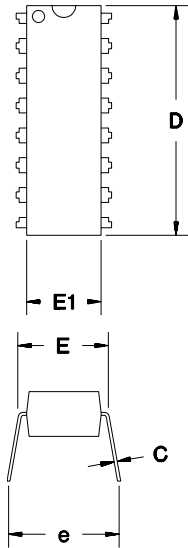
## Timing (T<sub>A</sub> = 0 to +70°C; V<sub>CC</sub> ±10%)

| Symbol           | Parameter  | Minimum | Typical | Maximum | Unit | Notes   |
|------------------|--|---------|---------|---------|------|---|
| t <sub>PW</sub>  | Pulse width for $\overline{\text{DCMD}}$ and INH pulse command | 1       | -       | -       | μs   | Pulse start for charge or discharge before charge               |
| d <sub>FCV</sub> | Time base variation  | -16     | -       | 16      | %    | V <sub>CC</sub> = 4.75V to 5.25V                                |
| f <sub>REG</sub> | MOD output regulation frequency                                | -       | -       | 300     | kHz  |   |
| t <sub>MCV</sub> | Maximum voltage termination time limit                         | 1       | -       | 2       | s    | Time limit to distinguish battery removed from charge complete. |

**Note:** Typical is at T<sub>A</sub> = 25°C, V<sub>CC</sub> = 5.0V.

# bq2004E/H

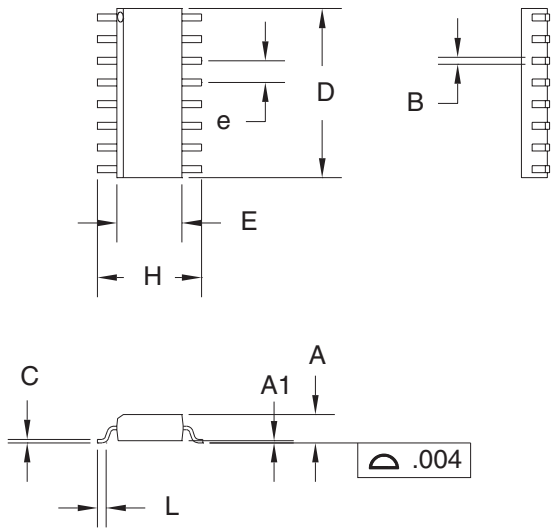
## 16-Pin DIP Narrow (PN)



16-Pin PN (0.300" DIP)

| Dimension | Inches |       | Millimeters |       |
|-----------|--------|-------|-------------|-------|
|           | Min.   | Max.  | Min.        | Max.  |
| A         | 0.160  | 0.180 | 4.06        | 4.57  |
| A1        | 0.015  | 0.040 | 0.38        | 1.02  |
| B         | 0.015  | 0.022 | 0.38        | 0.56  |
| B1        | 0.055  | 0.065 | 1.40        | 1.65  |
| C         | 0.008  | 0.013 | 0.20        | 0.33  |
| D         | 0.740  | 0.770 | 18.80       | 19.56 |
| E         | 0.300  | 0.325 | 7.62        | 8.26  |
| E1        | 0.230  | 0.280 | 5.84        | 7.11  |
| e         | 0.300  | 0.370 | 7.62        | 9.40  |
| G         | 0.090  | 0.110 | 2.29        | 2.79  |
| L         | 0.115  | 0.150 | 2.92        | 3.81  |
| S         | 0.020  | 0.040 | 0.51        | 1.02  |

16-Pin SOIC Narrow (SN)



16-Pin SN (0.150" SOIC)

| Dimension | Inches |       | Millimeters |       |
|-----------|--------|-------|-------------|-------|
|           | Min.   | Max.  | Min.        | Max.  |
| A         | 0.060  | 0.070 | 1.52        | 1.78  |
| A1        | 0.004  | 0.010 | 0.10        | 0.25  |
| B         | 0.013  | 0.020 | 0.33        | 0.51  |
| C         | 0.007  | 0.010 | 0.18        | 0.25  |
| D         | 0.385  | 0.400 | 9.78        | 10.16 |
| E         | 0.150  | 0.160 | 3.81        | 4.06  |
| e         | 0.045  | 0.055 | 1.14        | 1.40  |
| H         | 0.225  | 0.245 | 5.72        | 6.22  |
| L         | 0.015  | 0.035 | 0.38        | 0.89  |

## bq2004E/H

---

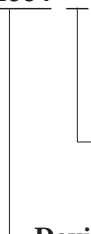
### Data Sheet Revision History

| Change No. | Page No. | Description  | Nature of Change                    |
|------------|----------|--|-------------------------------------|
| 1          | All      | Combined bq2004E and bq2004H, revised and expanded format of this data sheet | Clarification                       |
| 2          | 7        | Separated bq2004E and bq2004H in Table 2, LED Output Summary                 | Clarification                       |
| 3          | 5        | Description of charge-pending state  | Clarification                       |
| 4          |          |  |                                     |
| 5          | 9        | Corrected $V_{SNSLO}$ tolerance  | Was: $\pm 0.010$<br>Is: $\pm 0.025$ |

**Note:** Change 1 = Oct. 1997 B changes from Sept. 1996 (bq2004E), Feb. 1997 (bq2004H).  
Change 2 = Feb. 1998 C changes from Oct. 1997 B.  
Change 3 = Dec. 1998 D changes from Feb. 1998 C.  
Change 4 = June 1999 E changes from Dec. 1998 D.  
Change 5 = Apr. 2005 F changes from June 1999 E.

**Ordering Information**

**bq2004**



**Package Option:**

PN = 16-pin narrow plastic DIP  
SN = 16-pin narrow SOIC

**Device:**

E = bq2004E Fast-Charge IC  
H = bq2004H Fast-Charge IC

**TAPE AND REEL INFORMATION**
**REEL DIMENSIONS**

**TAPE DIMENSIONS**


|    |   |
|----|---|
| A0 | Dimension designed to accommodate the component width     |
| B0 | Dimension designed to accommodate the component length    |
| K0 | Dimension designed to accommodate the component thickness |
| W  | Overall width of the carrier tape                         |
| P1 | Pitch between successive cavity centers                   |

**TAPE AND REEL INFORMATION**

\*All dimensions are nominal

| Device      | Package Type | Package Drawing | Pins | SPQ  | Reel Diameter (mm) | Reel Width W1 (mm) | A0 (mm) | B0 (mm) | K0 (mm) | P1 (mm) | W (mm) | Pin1 Quadrant |
|-------------|--------------|-----------------|------|------|--------------------|--------------------|---------|---------|---------|---------|--------|---------------|
| BQ2004ESNTR | SOIC         | D               | 16   | 2500 | 330.0              | 16.4               | 6.5     | 10.3    | 2.1     | 8.0     | 16.0   | Q1            |
| BQ2004HSNTR | SOIC         | D               | 16   | 2500 | 330.0              | 16.4               | 6.5     | 10.3    | 2.1     | 8.0     | 16.0   | Q1            |

**TAPE AND REEL BOX DIMENSIONS**


\*All dimensions are nominal

| Device      | Package Type | Package Drawing | Pins | SPQ  | Length (mm) | Width (mm) | Height (mm) |
|-------------|--------------|-----------------|------|------|-------------|------------|-------------|
| BQ2004ESNTR | SOIC         | D               | 16   | 2500 | 367.0       | 367.0      | 38.0        |
| BQ2004HSNTR | SOIC         | D               | 16   | 2500 | 367.0       | 367.0      | 38.0        |

## IMPORTANT NOTICE

Texas Instruments Incorporated and its subsidiaries (TI) reserve the right to make corrections, enhancements, improvements and other changes to its semiconductor products and services per JESD46C and to discontinue any product or service per JESD48B. Buyers should obtain the latest relevant information before placing orders and should verify that such information is current and complete. All semiconductor products (also referred to herein as "components") are sold subject to TI's terms and conditions of sale supplied at the time of order acknowledgment.

TI warrants performance of its components to the specifications applicable at the time of sale, in accordance with the warranty in TI's terms and conditions of sale of semiconductor products. Testing and other quality control techniques are used to the extent TI deems necessary to support this warranty. Except where mandated by applicable law, testing of all parameters of each component is not necessarily performed.

TI assumes no liability for applications assistance or the design of Buyers' products. Buyers are responsible for their products and applications using TI components. To minimize the risks associated with Buyers' products and applications, Buyers should provide adequate design and operating safeguards.

TI does not warrant or represent that any license, either express or implied, is granted under any patent right, copyright, mask work right, or other intellectual property right relating to any combination, machine, or process in which TI components or services are used. Information published by TI regarding third-party products or services does not constitute a license to use such products or services or a warranty or endorsement thereof. Use of such information may require a license from a third party under the patents or other intellectual property of the third party, or a license from TI under the patents or other intellectual property of TI.

Reproduction of significant portions of TI information in TI data books or data sheets is permissible only if reproduction is without alteration and is accompanied by all associated warranties, conditions, limitations, and notices. TI is not responsible or liable for such altered documentation. Information of third parties may be subject to additional restrictions.

Resale of TI components or services with statements different from or beyond the parameters stated by TI for that component or service voids all express and any implied warranties for the associated TI component or service and is an unfair and deceptive business practice. TI is not responsible or liable for any such statements.

Buyer acknowledges and agrees that it is solely responsible for compliance with all legal, regulatory and safety-related requirements concerning its products, and any use of TI components in its applications, notwithstanding any applications-related information or support that may be provided by TI. Buyer represents and agrees that it has all the necessary expertise to create and implement safeguards which anticipate dangerous consequences of failures, monitor failures and their consequences, lessen the likelihood of failures that might cause harm and take appropriate remedial actions. Buyer will fully indemnify TI and its representatives against any damages arising out of the use of any TI components in safety-critical applications.

In some cases, TI components may be promoted specifically to facilitate safety-related applications. With such components, TI's goal is to help enable customers to design and create their own end-product solutions that meet applicable functional safety standards and requirements. Nonetheless, such components are subject to these terms.

No TI components are authorized for use in FDA Class III (or similar life-critical medical equipment) unless authorized officers of the parties have executed a special agreement specifically governing such use.

Only those TI components which TI has specifically designated as military grade or "enhanced plastic" are designed and intended for use in military/aerospace applications or environments. Buyer acknowledges and agrees that any military or aerospace use of TI components which have **not** been so designated is solely at the Buyer's risk, and that Buyer is solely responsible for compliance with all legal and regulatory requirements in connection with such use.

TI has specifically designated certain components which meet ISO/TS16949 requirements, mainly for automotive use. Components which have not been so designated are neither designed nor intended for automotive use; and TI will not be responsible for any failure of such components to meet such requirements.

### Products

|                        |  |
|------------------------|--|
| Audio                  | <a href="http://www.ti.com/audio">www.ti.com/audio</a>                               |
| Amplifiers             | <a href="http://amplifier.ti.com">amplifier.ti.com</a>                               |
| Data Converters        | <a href="http://dataconverter.ti.com">dataconverter.ti.com</a>                       |
| DLP® Products          | <a href="http://www.dlp.com">www.dlp.com</a>   |
| DSP                    | <a href="http://dsp.ti.com">dsp.ti.com</a>   |
| Clocks and Timers      | <a href="http://www.ti.com/clocks">www.ti.com/clocks</a>                             |
| Interface              | <a href="http://interface.ti.com">interface.ti.com</a>                               |
| Logic                  | <a href="http://logic.ti.com">logic.ti.com</a>                                       |
| Power Mgmt             | <a href="http://power.ti.com">power.ti.com</a>                                       |
| Microcontrollers       | <a href="http://microcontroller.ti.com">microcontroller.ti.com</a>                   |
| RFID                   | <a href="http://www.ti-rfid.com">www.ti-rfid.com</a>                                 |
| OMAP Mobile Processors | <a href="http://www.ti.com/omap">www.ti.com/omap</a>                                 |
| Wireless Connectivity  | <a href="http://www.ti.com/wirelessconnectivity">www.ti.com/wirelessconnectivity</a> |

### Applications

|                               |  |
|-------------------------------|--|
| Automotive and Transportation | <a href="http://www.ti.com/automotive">www.ti.com/automotive</a>                         |
| Communications and Telecom    | <a href="http://www.ti.com/communications">www.ti.com/communications</a>                 |
| Computers and Peripherals     | <a href="http://www.ti.com/computers">www.ti.com/computers</a>                           |
| Consumer Electronics          | <a href="http://www.ti.com/consumer-apps">www.ti.com/consumer-apps</a>                   |
| Energy and Lighting           | <a href="http://www.ti.com/energy">www.ti.com/energy</a>                                 |
| Industrial                    | <a href="http://www.ti.com/industrial">www.ti.com/industrial</a>                         |
| Medical                       | <a href="http://www.ti.com/medical">www.ti.com/medical</a>                               |
| Security                      | <a href="http://www.ti.com/security">www.ti.com/security</a>                             |
| Space, Avionics and Defense   | <a href="http://www.ti.com/space-avionics-defense">www.ti.com/space-avionics-defense</a> |
| Video and Imaging             | <a href="http://www.ti.com/video">www.ti.com/video</a>                                   |

**TI E2E Community** [e2e.ti.com](http://e2e.ti.com)