



The Time-saving Product Line

Quick Selection, Superior Design, Fast Mounting

Bulletin 800F



Allen-Bradley

**Rockwell
Automation**

Quick Selection



Push Button, Non-illuminated, Momentary, Flush

Plastic	Metal
○ 800FP-F1	800FM-F1
● 800FP-F2	800FM-F2
● 800FP-F3	800FM-F3
● 800FP-F4	800FM-F4
● 800FP-F5	800FM-F5
● 800FP-F6	800FM-F6
∅ 800FP-F9	800FM-F9
∅ Push Button without Cap	



Push Button, Illuminated, Momentary, Extended

Plastic	Metal
● 800FP-LE3	800FM-LE3
● 800FP-LE4	800FM-LE4
● 800FP-LE5	800FM-LE5
● 800FP-LE6	800FM-LE6
○ 800FP-LE7	800FM-LE7
∅ 800FP-LE9	800FM-LE9
∅ Push Button without Cap	



Push Button, Non-illuminated, Momentary, Extended

Plastic	Metal
○ 800FP-E1	800FM-E1
● 800FP-E2	800FM-E2
● 800FP-E3	800FM-E3
● 800FP-E4	800FM-E4
● 800FP-E5	800FM-E5
● 800FP-E6	800FM-E6
∅ 800FP-E9	800FM-E9
∅ Push Button without Cap	



Reset Push Button

Plastic	Metal
Ⓡ 800FP-R611	800FM-R611
● 800FP-R6	800FM-R6



Pilot Light

Plastic	Metal
● 800FP-P3	800FM-P3
● 800FP-P4	800FM-P4
● 800FP-P5	800FM-P5
● 800FP-P6	800FM-P6
○ 800FP-P7	800FM-P7
∅ 800FP-P9	800FM-P9
∅ Pilot light without lens or diffuser	



Push Button, Illuminated, Momentary, Flush

Plastic	Metal
● 800FP-LF3	800FM-LF3
● 800FP-LF4	800FM-LF4
● 800FP-LF5	800FM-LF5
● 800FP-LF6	800FM-LF6
○ 800FP-LF7	800FM-LF7
∅ 800FP-LF9	800FM-LF9
∅ Push Button without Cap	



Multi-function, Non-illuminated

Plastic	Metal
Ⓡ 800FP-U2FFFE	800FM-U2FFFE
Ⓡ 800FP-U2EFFE	800FM-U2EFFE
Ⓡ 800FP-U3F3F34	800FM-U3F3F34



Plastic Operator



Metal Operator

Plastic Latch



Metal Latch



Integrated LED Module



Contact Block





**Selector Switch, Non-illuminated,
2 Position, Maintained**

- | | |
|----------------|--------------|
| Plastic | Metal |
| ● 800FP-SM22 | 800FM-SM22 |



**Selector Switch, Illuminated,
2 Position, Spring Return from Left**

- | | |
|----------------|--------------|
| Plastic | Metal |
| ● 800FP-LSL23 | 800FM-LSL23 |
| ● 800FP-LSL24 | 800FM-LSL24 |
| ● 800FP-LSL25 | 800FM-LSL25 |
| ● 800FP-LSL26 | 800FM-LSL26 |
| ○ 800FP-LSL27 | 800FM-LSL27 |



**Selector Switch, Non-illuminated,
2 Position, Spring Return from Right**

- | | |
|----------------|--------------|
| Plastic | Metal |
| ● 800FP-SR22 | 800FM-SR22 |



**Selector Switch, Non-illuminated,
3 Position, Maintained**

- | | |
|----------------|--------------|
| Plastic | Metal |
| ● 800FP-SM32 | 800FM-SM32 |



**Selector Switch, Non-illuminated,
2 Position, Spring Return from Left**

- | | |
|----------------|--------------|
| Plastic | Metal |
| ● 800FP-SL22 | 800FM-SL22 |



**Selector Switch, Non-illuminated,
3 Position, Spring Return from Right**

- | | |
|----------------|--------------|
| Plastic | Metal |
| ● 800FP-SR32 | 800FM-SR32 |



**Selector Switch, Illuminated,
2 Position, Maintained**

- | | |
|----------------|--------------|
| Plastic | Metal |
| ● 800FP-LSM23 | 800FM-LSM23 |
| ● 800FP-LSM24 | 800FM-LSM24 |
| ● 800FP-LSM25 | 800FM-LSM25 |
| ● 800FP-LSM26 | 800FM-LSM26 |
| ○ 800FP-LSM27 | 800FM-LSM27 |



**Selector Switch, Non-illuminated,
3 Position, Spring Return from Left**

- | | |
|----------------|--------------|
| Plastic | Metal |
| ● 800FP-SL32 | 800FM-SL32 |



**Selector Switch, Illuminated,
2 Position, Spring Return from Right**

- | | |
|----------------|--------------|
| Plastic | Metal |
| ● 800FP-LSR23 | 800FM-LSR23 |
| ● 800FP-LSR24 | 800FM-LSR24 |
| ● 800FP-LSR25 | 800FM-LSR25 |
| ● 800FP-LSR26 | 800FM-LSR26 |
| ○ 800FP-LSR27 | 800FM-LSR27 |



**Selector Switch, Non-illuminated,
3 Position, Spring Return from Both**

- | | |
|----------------|--------------|
| Plastic | Metal |
| ● 800FP-SB32 | 800FM-SB32 |



Plastic Latch
800F-ALP



Metal Latch
800F-ALM



**Integrated LED Module, Screw
Terminations (latch not included)**

- | | |
|----------|-----------|
| 800F-N3* | 24V AC/DC |
| 800F-N5* | 120V AC |
| 800F-N7* | 240V AC |

* Add LED color; R = red, G = green,
Y = yellow, B = blue, W = white



**Integrated LED Module, Spring-Clamp
Terminations (latch not included)**

- | | |
|----------|-----------|
| 800F-Q3* | 24V AC/DC |
| 800F-Q5* | 120V AC |
| 800F-Q7* | 240V AC |

* Add LED color; R = red, G = green,
Y = yellow, B = blue, W = white



Selector Switch, Illuminated, 3 Position, Maintained

Plastic	Metal
● 800FP-LSM33	800FM-LSM33
● 800FP-LSM34	800FM-LSM34
● 800FP-LSM35	800FM-LSM35
● 800FP-LSM36	800FM-LSM36
○ 800FP-LSM37	800FM-LSM37



Selector Switch, Illuminated, 3 Position, Spring Return from Both

Plastic	Metal
● 800FP-LSB33	800FM-LSB33
● 800FP-LSB34	800FM-LSB34
● 800FP-LSB35	800FM-LSB35
● 800FP-LSB36	800FM-LSB36
○ 800FP-LSB37	800FM-LSB37



Selector Switch, Illuminated, 3 Position, Spring Return from Right

Plastic	Metal
● 800FP-LSR33	800FM-LSR33
● 800FP-LSR34	800FM-LSR34
● 800FP-LSR35	800FM-LSR35
● 800FP-LSR36	800FM-LSR36
○ 800FP-LSR37	800FM-LSR37



Key Selector Switch, Ronis, 2 Position

Plastic	Metal
● 800FP-KM21	800FM-KM21
● 800FP-KM23	800FM-KM23
● 800FP-KR21	800FM-KR21



Selector Switch, Illuminated, 3 Position, Spring Return from Left

Plastic	Metal
● 800FP-LSL33	800FM-LSL33
● 800FP-LSL34	800FM-LSL34
● 800FP-LSL35	800FM-LSL35
● 800FP-LSL36	800FM-LSL36
○ 800FP-LSL37	800FM-LSL37



Key Selector Switch, Ronis, 3 Position

Plastic	Metal
● 800FP-KM31	800FM-KM31
● 800FP-KM33	800FM-KM33
● 800FP-KM34	800FM-KM34
● 800FP-KB34	800FM-KB34
● 800FP-KR35	800FM-KR35



Contact Block, Screw Terminations, (latch not included)

800F-X10		1NO
800F-X01		1NC
800F-X10E		1NO Early Make
800F-X01L		1NC Late Break
800F-X10V (1mA)		1NO QuadCONNECT™
800F-X01V (1mA)		1NC QuadCONNECT™
800F-X01S		1 Self-monitoring



Contact Block, Spring-Clamp Terminations, (latch not included)

800F-Q10		1NO
800F-Q01		1NC



Mushroom Push Button, Non-illuminated, 40 mm Momentary

Plastic	Metal
● 800FP-MM42	800FM-MM42
● 800FP-MM43	800FM-MM43
● 800FP-MM44	800FM-MM44
● 800FP-MM45	800FM-MM45
● 800FP-MM46	800FM-MM46



E-STOP Push Button Key Release, 40 mm Mushroom

	Plastic	Metal
	800FP-MK44	800FM-MK44
Complete unit		
1 SMCB	800FP-MK44PX01S	800FM-MK44MX01S
1 SMCB+ 1NO	800FP-MK44PX11S	800FM-MK44MX11S



E-STOP Push Button, Twist-to-release, 30 mm Mushroom

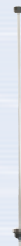
Plastic	Metal
800FP-MT34	800FM-MT34
Complete unit	
800FP-MT34PX01S	800FM-MT34MX01S
800FP-MT34PX11S	800FM-MT34MX11S

1 SMCB
1 SMCB+ 1NO

Accessories

Reset Rod

800F-ATRO1	40 mm
800F-ATRO2	55 mm
800F-ATRO4	85 mm
800F-ATRO6	115 mm
800F-ATRO8	145 mm
800F-ATR19	315 mm



E-STOP Push Button, Twist-to-release, 40 mm Mushroom

Plastic	Metal
800FP-MT44	800FM-MT44
Complete unit	
800FP-MT44PX01S	800FM-MT44MX01S
800FP-MT44PX11S	800FM-MT44MX11S

1 SMCB
1 SMCB+ 1NO

Mounting Ring Wrench

800F-AW2



E-STOP Legend

800F-15Y
800F-16Y



E-STOP Push Button, Twist-to-release, 60 mm Mushroom

Plastic	Metal
800FP-MT64	800FM-MT64
Complete unit	
800FP-MT64PX01S	800FM-MT64MX01S
800FP-MT64PX11S	800FM-MT64MX11S

1 SMCB
1 SMCB+ 1NO

Hole Adapter

800F-AHA1



Anti-Rotation Washer

800F-ALC1



Plastic Enclosures



Holes	Gray	Yellow
1	800F-1P M ¹	800E-1Y M ¹
2	800F-2P M	
3	800F-3P M	
4	800F-4P M	
6	800F-6P M	



Aluminum Enclosures

Holes	Gray
1	800F-1M M ¹
2	800F-2M M
3	800F-3M M
5	800F-5M M

¹ Replace "M" with "P" for PG conduit/through holes instead of metric.

Contact Block Base Mounted



800F-BX10	1NO
800F-BX01	1NC
800F-BX10E	1NO Early Make
800F-BX01L	1NC Late Break
800F-BX10V (1mA)	1NO QuadCONNECT™
800F-BX01V (1mA)	1NC QuadCONNECT™

Integrated LED Base Mounted



800F-BN3*	24V AC/DC
800F-BN5*	120V AC
800F-BN7*	240V AC

* Add LED color; R = red, G = green, Y = yellow, B = blue, W = white

Color-coding for Push Button Actuators and their meanings according IEC 60204-1

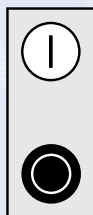
Color	Meaning	Explanation	Examples of application
RED	Emergency	Actuate in the event of a hazardous condition or emergency	Emergency stop, STOP/OFF Initiation of emergency function
YELLOW	Abnormal	Actuate in the event of an abnormal condition	Intervention to suppress abnormal condition Intervention to restart an interrupted automatic cycle
GREEN	Normal	Actuate to initiate normal conditions	START/ON
BLUE	Mandatory	Actuate for a condition requiring mandatory action	Reset function
WHITE	No specific meaning assigned	For general initiation of functions except for emergency stop	START/ON (preferred) STOP/OFF
BLACK	No specific meaning assigned	For general initiation of functions except for emergency stop	START/ON STOP/OFF (preferred)

Note – Where a supplemental means of coding (e.g. shape, position, texture) is used for the identification of Push Button Actuators, then the same color WHITE or BLACK may be used for various functions (e.g. White for START/ON and for STOP/OFF actuators).

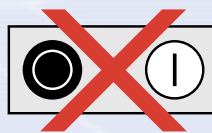
Markings for Push Buttons

It is recommended that Push Buttons be marked, near to or preferably directly on the actuators, with the following symbols:

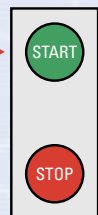
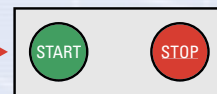
START or ON	STOP or OFF	Push Buttons acting alternately as START or STOP buttons and as ON or OFF buttons	Push Buttons acting as START or ON buttons when pressed and as STOP or OFF buttons when released (i.e. hold-to-run)
	○	○ 	○
417-IEC-5007	417-IEC-5008	417-IEC-5010	417-IEC-5011



Location Push Button according IEC



North American location Push Button



Colors for Indicator Lights and their meanings with respect to the condition of the machine according IEC 60204-1

Color	Meaning	Explanation	Action by operator
RED	Emergency	Hazardous Condition	Immediate action to deal with hazardous condition (e.g. by operating emergency stop)
YELLOW	Abnormal	Abnormal condition Impending critical condition	Monitoring and/or intervention (e.g. by re-establishing the intended function)
GREEN	Normal	Normal condition	Optional
BLUE	Mandatory	Indication of a condition that requires action by the operator	Mandatory action
WHITE	Neutral	Other conditions; may be used whenever doubt exists about the application of RED, YELLOW, GREEN, BLUE	Monitoring

Indicator Lights and displays according IEC 60204-1

Modes of use

Indicator Lights and Displays serve to give the following types of information:

- **Indication:** to attract the operator's attention or to indicate that a certain task should be performed. The colors RED, YELLOW, GREEN and BLUE are normally used in this mode.
- **Confirmation:** to confirm a command, or a condition, or to confirm the termination of a change or transition period. The colors BLUE and WHITE are normally used in this mode and GREEN may be used in some cases.

Colors

Unless otherwise agreed between the supplier and the user, Indicator (Pilot) Light lenses shall be color-coded with respect to the condition (status) of the machine in accordance with above table.

Alternative meanings may be assigned (see IEC 60073) in accordance with one of the following criteria:

- the safety of persons and the environment;
- the state of the electrical equipment.

Illuminated Push Buttons according IEC 60204-1

Illuminated Push Button Actuators shall be color-coded in accordance with the tables above. Where there is difficulty in assigning an appropriate color, WHITE shall be used. The color RED for the emergency stop actuator shall not depend on the illumination of its light.



Superior Design

The 800F line is designed and manufactured to meet demanding performance specifications. Using state-of-the-art solid modeling techniques and finite element analysis, every component built into 800F Push Buttons is optimized for durability and performance.

Durable Materials

- 800FP operators are made of industrial grade thermoplastic for superior chemical resistance.
- 800FM operators are constructed of tough die cast zinc alloy, finished with chromate plating.

Switching Safety

- Rigid teeth inside all 800F selector switches provide positive detent which assures they will not hang-up between positions.
- Our constant energy solution adds an additional layer of protection to assure switching safety. Vibration will not cause a change in state.

Fast Mounting

Allen-Bradley Push Buttons are designed for easy 1-person mounting and removal.



www.rockwellautomation.com

Corporate Headquarters

Rockwell Automation, 777 East Wisconsin Avenue, Suite 1400, Milwaukee, WI, 53202-5302 USA, Tel: (1) 414.212.5200, Fax: (1) 414.212.5201

Headquarters for Allen-Bradley Products, Rockwell Software Products and Global Manufacturing Solutions

Americas: Rockwell Automation, 1201 South Second Street, Milwaukee, WI 53204-2496 USA, Tel: (1) 414.382.2000, Fax: (1) 414.382.4444
Europe/Middle East/Africa: Rockwell Automation SA/NV, Vorstlaan/Boulevard du Souverain 36, 1170 Brussels, Belgium, Tel: (32) 2 663 0600, Fax: (32) 2 663 0640

Asia Pacific: Rockwell Automation, 27/F Citicorp Centre, 18 Whitfield Road, Causeway Bay, Hong Kong, Tel: (852) 2887 4788, Fax: (852) 2508 1846

Worldwide Solutions

- Designed to meet worldwide standards.
- UL Listed, CSA Rated, CE Marked, Third party approval: KEMA.
- Operator caps, legend plates and inserts available with international symbols, foreign languages, and custom markings.

Dependable Sealing

- Our dependable sealing allows us to offer IP 66 and Type 4/13 across the 800F product line.
- Diaphragm seals are used on most linear travel devices. These seals flex with operation of the button and life/performance are not dependent on lubrication.
- K-seals are used on rotating devices such as twist-to-release E-stops. These seals offer dual wiping action that provides high pressure sealing performance.